

THIS MAP WAS PREPARED FOR ASSESSMENT PURPOSE ONLY.

NE1/4 SW1/4 SEC.10 T30S. R.4W. W.M.
DOUGLAS COUNTY
1" = 100'

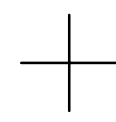
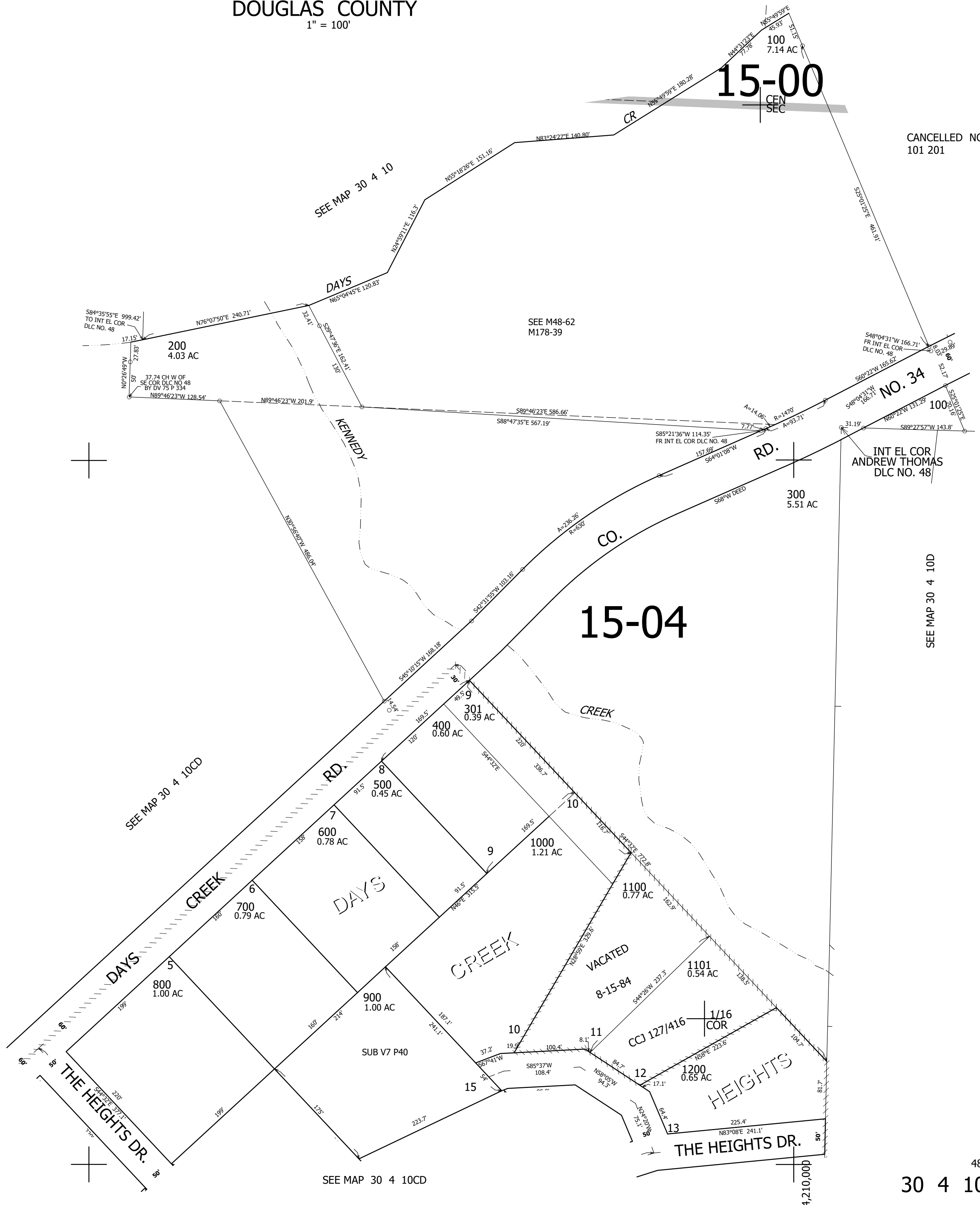
REVISED ON
1-5-22

30 4 10CA

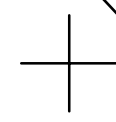
1/16 COR

15-00
CEN SEC

CANCELLED NO'S
101 201



1/16 COR



SEE MAP 30 4 10D

SEE MAP 30 4 10CD

4,210,000

487,000
30 4 10CA