

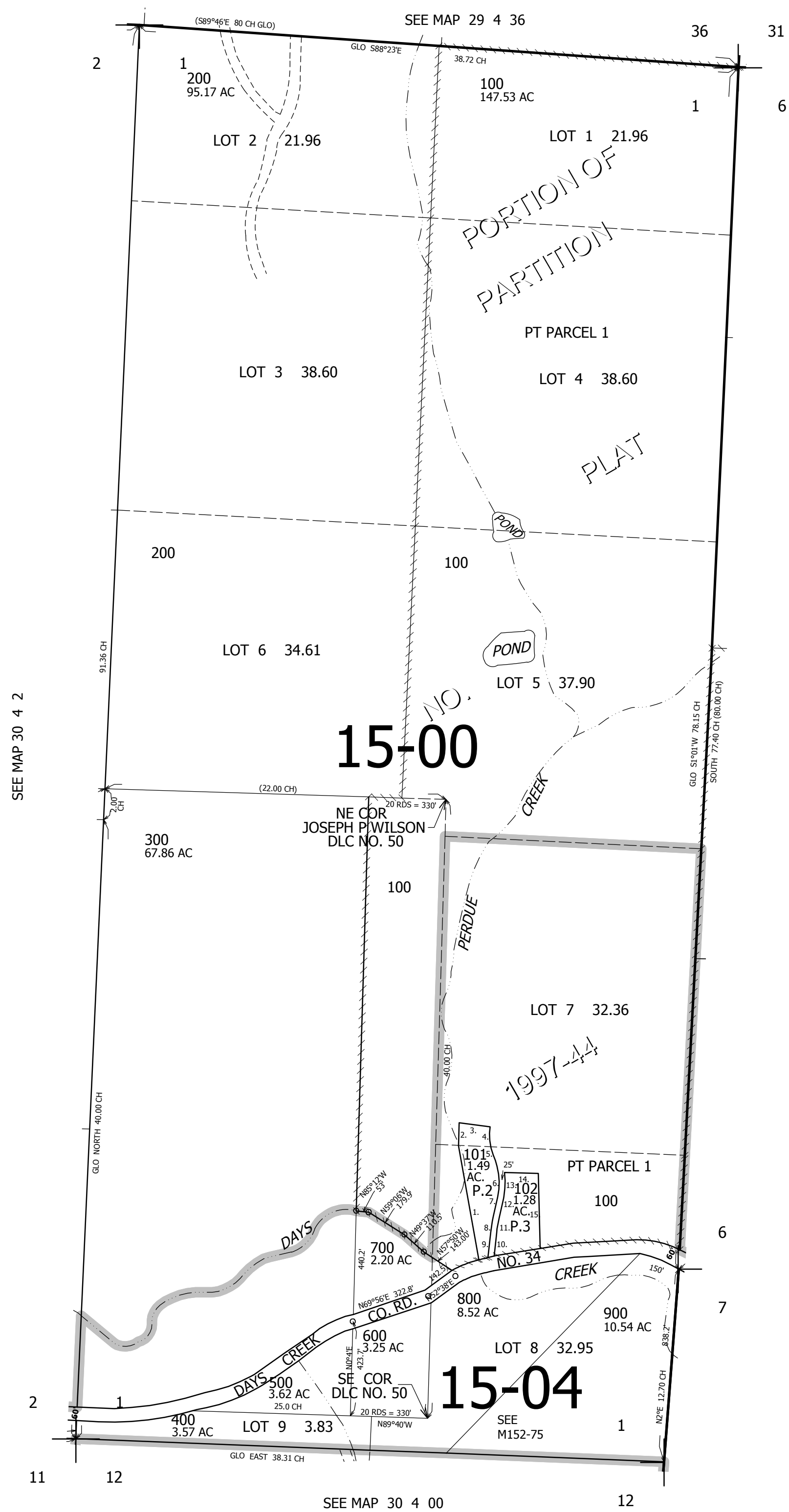
THIS MAP WAS PREPARED FOR ASSESSMENT PURPOSE ONLY.

SEC.1 T30S. R.4W. W.M.  
DOUGLAS COUNTY

1" = 400'

REVISED ON  
7-23-15

30 4 1



CANCELLED NO'S

- PP 1997-44
1. N10°06'07"W 518.29'
  2. N1°09'04"E 98.17'
  3. S82°26'23"E 133.89'
  4. LC=S6°21'17"E 121.21'
  5. S20°18'58"E 25.06'
  6. LC=S3°48'47"E 155.67'
  7. S12°41'25"W 85.71'
  8. LC=S9°23'W 67.53'
  9. S6°04'36"W 124.46'
  10. N6°04'36"E 108.96'
  11. LC=N9°23'E 64.65'
  12. N12°41'25"E 85.71'
  13. LC=N2°00'42"W 110.78'
  14. N88°15'E 144.9'
  15. S1°18'34"E 319.51'

491,000

4,222,000

30 4 1