

THIS MAP WAS PREPARED FOR ASSESSMENT PURPOSE ONLY.

Upper Left:
123°15'2"W 43°0'18"N
4185669E 499847N ft

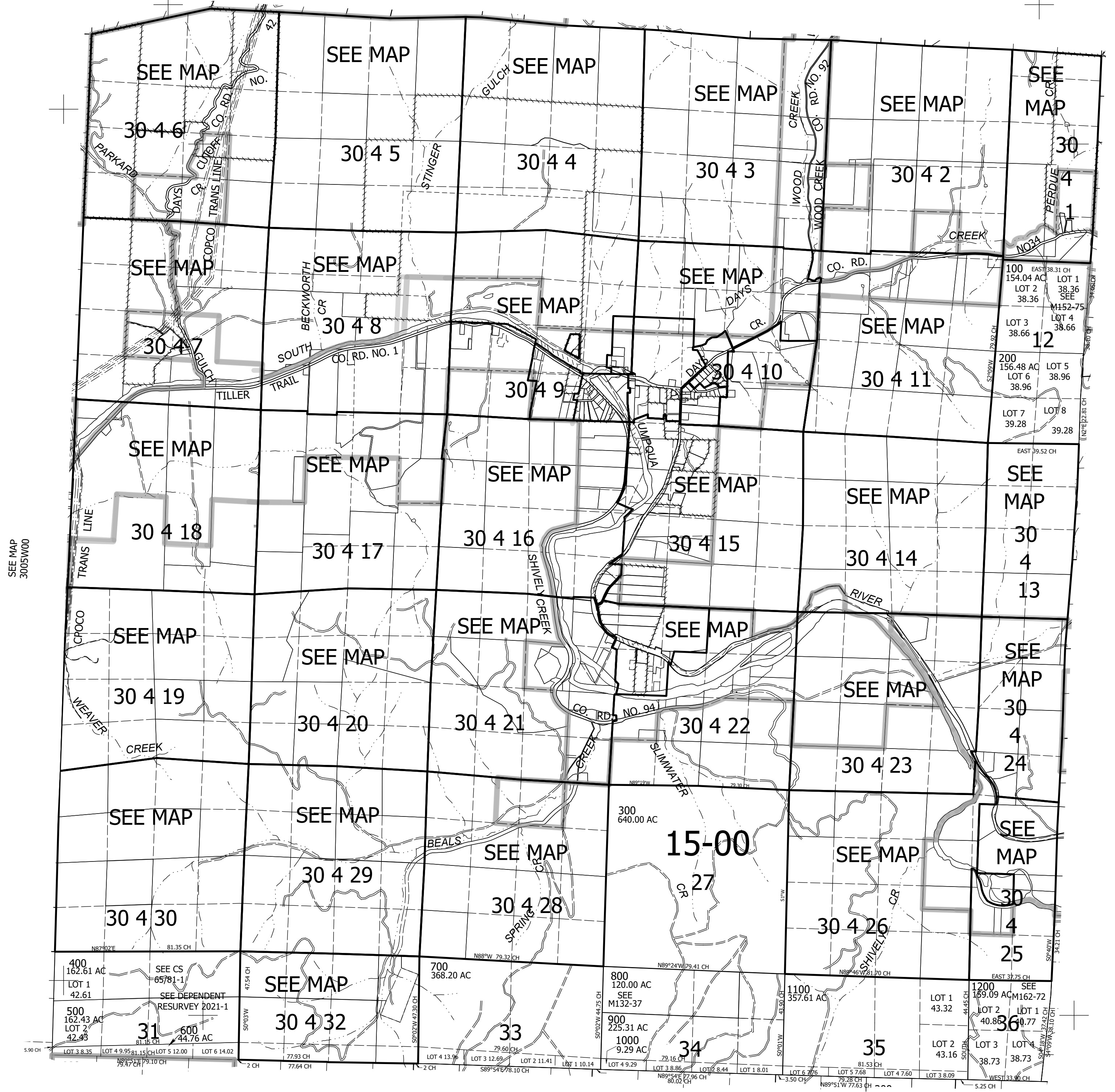
T.30S. R.04W. W.M.
DOUGLAS COUNTY

1" = 2000'
SEE MAP
2904W00

Date Exported 2025-12-30

300400
& INDEX

CANCELLED NOS:
500M1 900M1



SEE MAP
3005W00

SEE MAP 3003W00

SEE
MAP
3104W00

300400
& INDEX

Lower Right:
123°6'W 42°54'7"N
4224916E 465071N ft