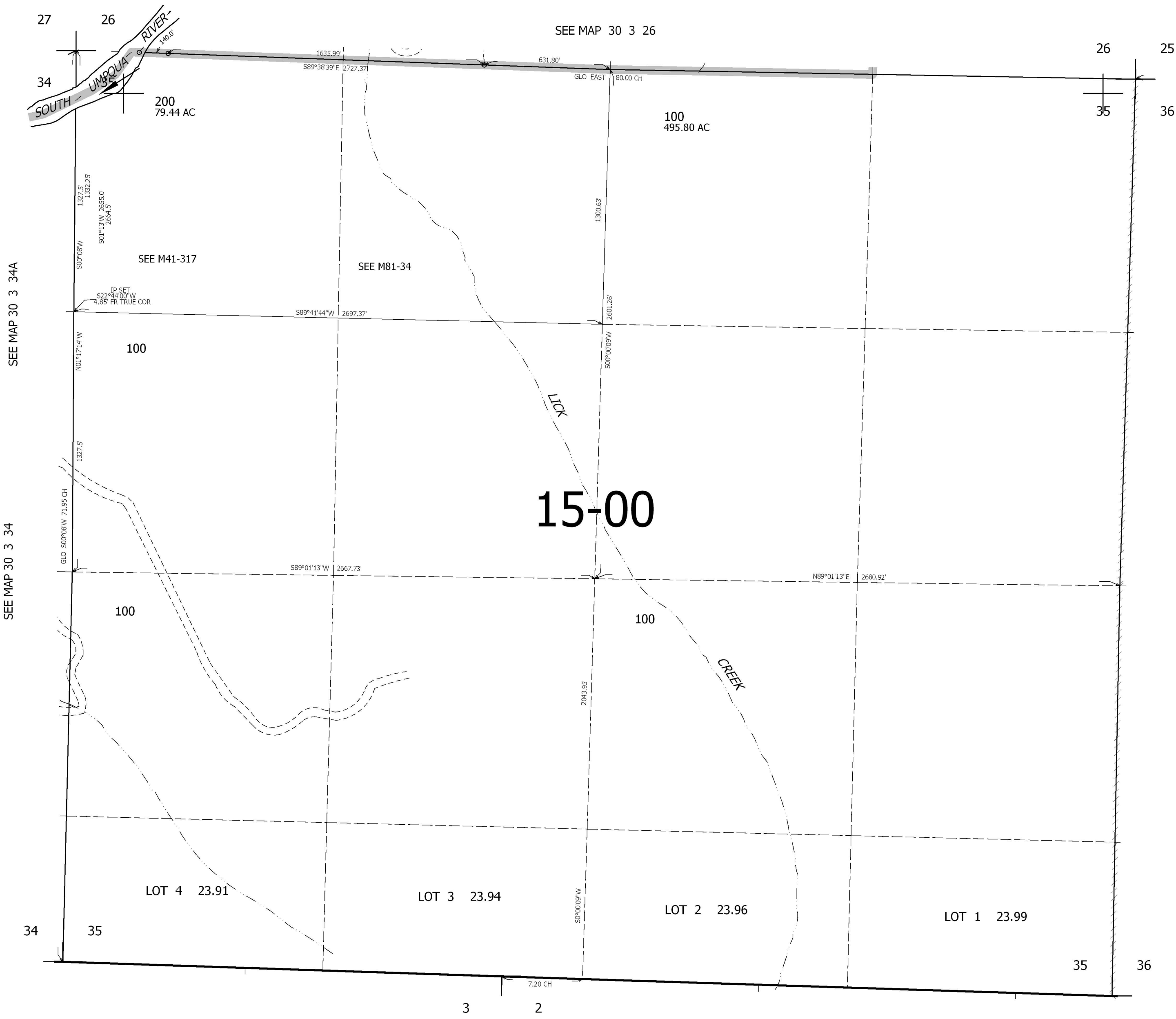


THIS MAP WAS PREPARED FOR ASSESSMENT PURPOSE ONLY.

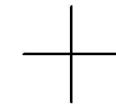
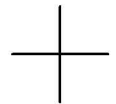
SEC.35 T30S. R.3W. W.M.  
DOUGLAS COUNTY  
1" = 400'

REVISED ON

30 3 35



CANCELLED NO'S



SEE MAP 31 3 00

466,000

4,246,000

30 3 35