

THIS MAP WAS PREPARED FOR ASSESSMENT PURPOSE ONLY.

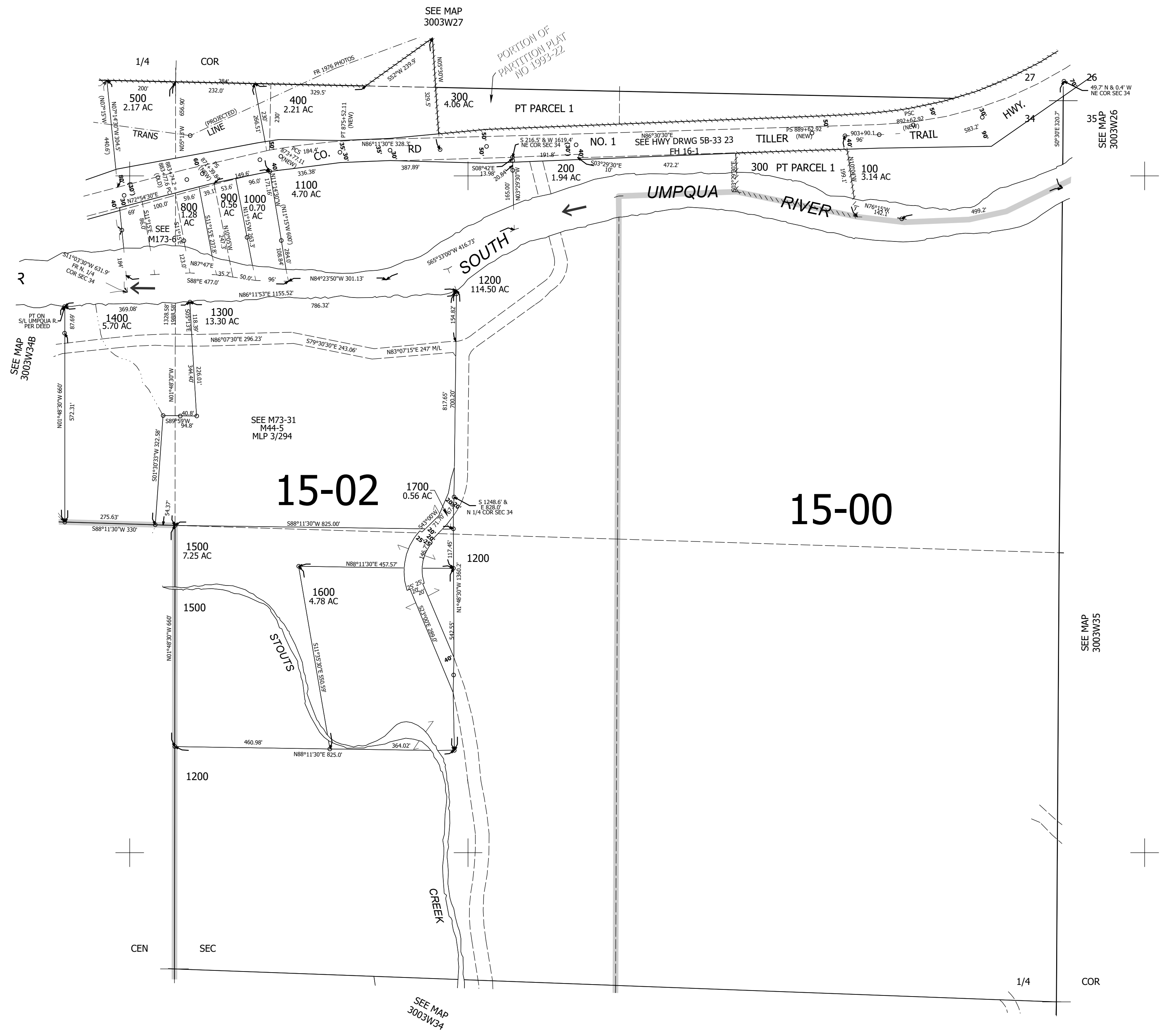
Upper Left:  
123°3'15"W 42°55'57"N  
4237366E 471745N ft

NE1/4 SEC.34 T.30S. R.03W. W.M.  
DOUGLAS COUNTY  
1" = 200'

Date Exported 2023-07-11

300334A

CANCELLED NOS:  
700 600 1101



SEE MAP 3003W27

SEE MAP 3003W26

SEE MAP 3003W34B

SEE MAP 3003W35

300334A

Lower Right:  
123°2'21"W 42°55'24"N  
4241291E 468268N ft