

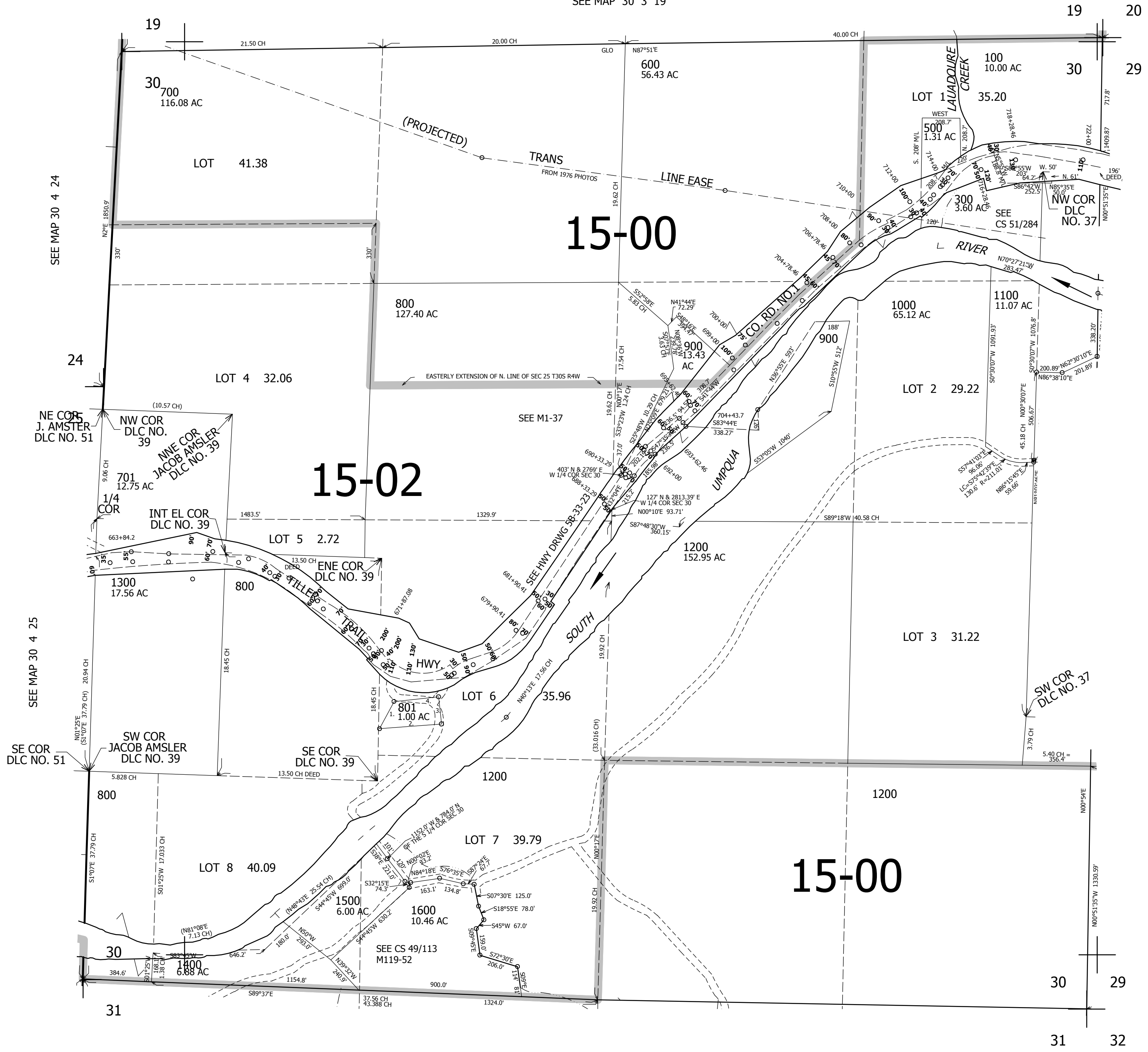
THIS MAP WAS PREPARED FOR ASSESSMENT PURPOSE ONLY.

SEC.30 T30S. R.3W. W.M.
DOUGLAS COUNTY
1" = 400'

REVISED ON
7-25-17

30 3 30

SEE MAP 30 3 19



CANCELLED NO'S
101 200 400
1001

SEE MAP 30 3 29

PARCEL 801
P.O.B. 943' S. & 1667' E. OF
W. 1/4 COR SEC 30
1. S22°20'30"W 174'
2. N83°13'30"E 329.7'
3. N6°46'30"W 152'
4. S83°13'30"W 245'

472,000

SEE MAP 30 3 00

4,225,000

30 3 30