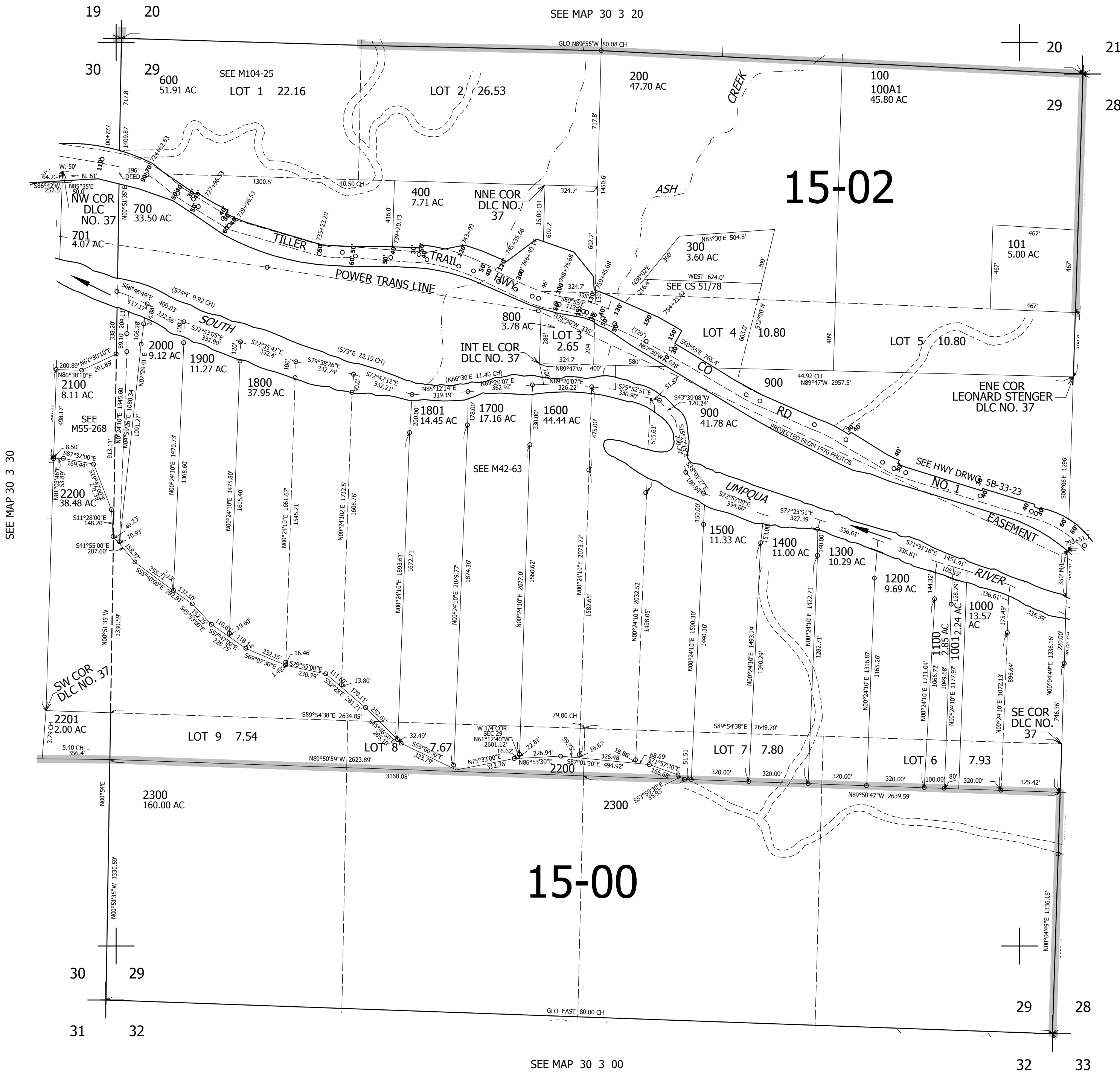


THIS MAP WAS PREPARED FOR ASSESSMENT PURPOSE ONLY.

SEC.29 T30S. R.3W. W.M. DOUGLAS COUNTY 1" = 400'

REVISED ON 8-4-16

30 3 29



CANCELLED NO'S 500 401 702

SEE MAP 30 3 28

SEE MAP 30 3 30

472,000

4,230,000

30 3 29