

THIS MAP WAS PREPARED FOR ASSESSMENT PURPOSE ONLY.

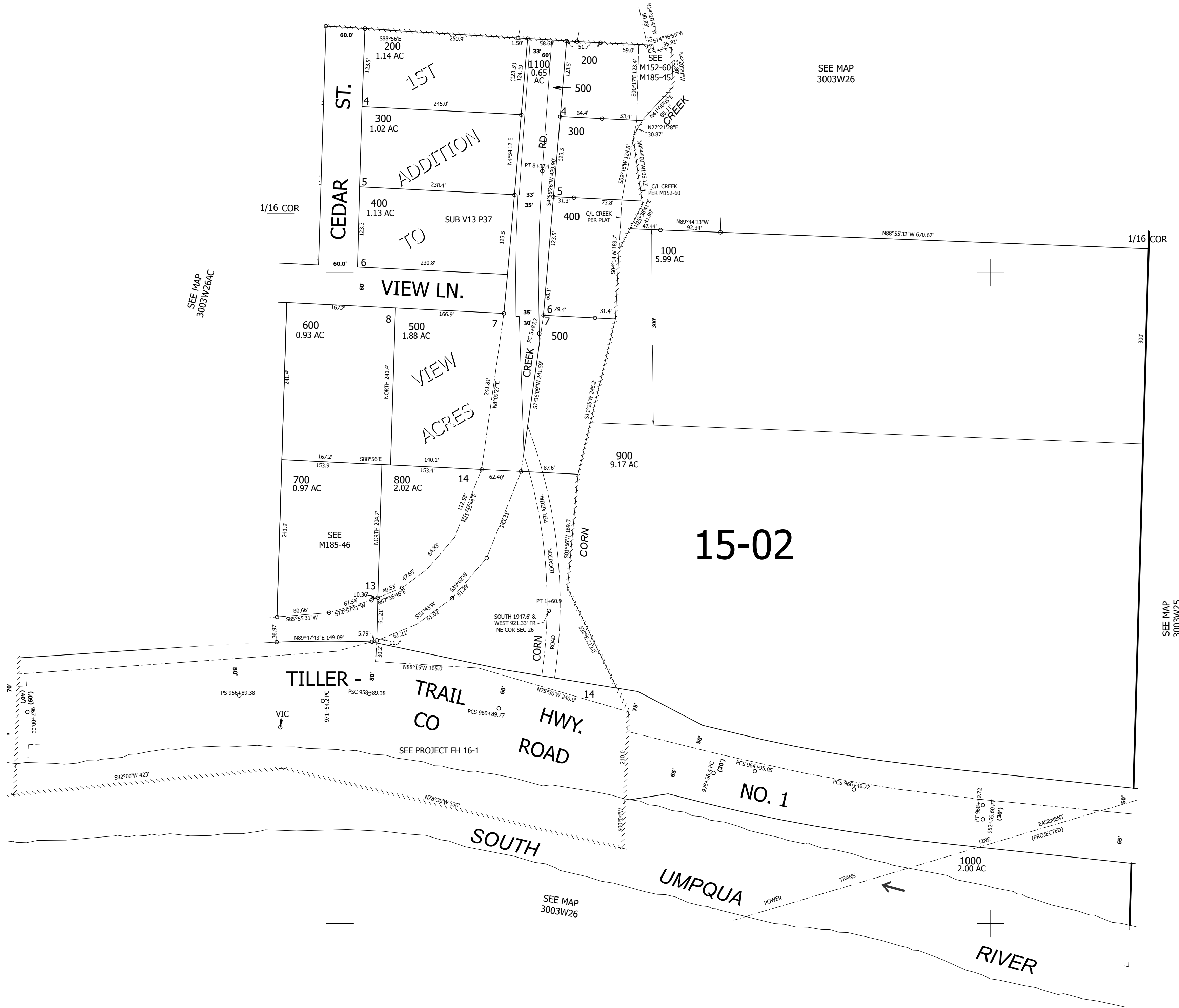
Upper Left:  
123°1'43"W 42°56'36"N  
4244382E 475510N ft

SE1/4 NE1/4 SEC.26 T.30S. R.03W. W.M.  
DOUGLAS COUNTY  
1" = 100'

Date Exported 2026-03-30

300326AD

CANCELLED NOS:  
1200



SEE MAP  
3003W26AC

SEE MAP  
3003W26

1/16 COR

300'

15-02

SEE MAP  
3003W25

300326AD

Lower Right:  
123°1'15"W 42°56'20"N  
4246354E 473771N ft