

THIS MAP WAS PREPARED FOR ASSESSMENT PURPOSE ONLY.

Upper Left:
123°2'51"W 42°56'52"N
4239326E 477216N ft

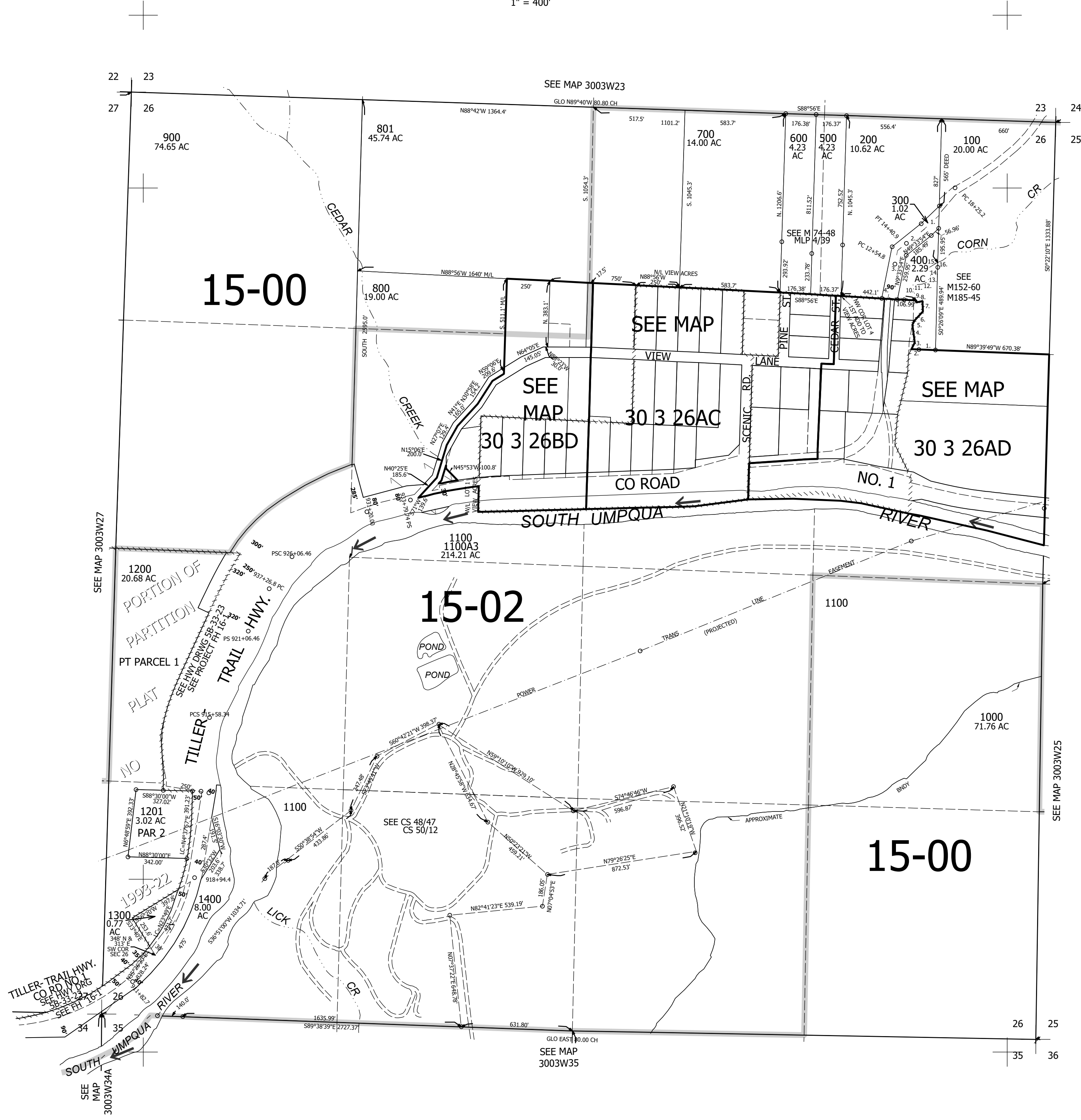
SEC.26 T.30S. R.03W. W.M.
DOUGLAS COUNTY
1" = 400'

Date Exported 2025-11-13

CANCELLED NOS:
701 302 303
1100A2 1100A1
304 305 306
301 201

TAXLOT 300
1. S45°W 100'
2. S50°W 200'
3. S10°W 300'
4. S2°E 400'
PER V120 P528

TAXLOT 400
1. N89°44'13"W 92.34'
2. S89°46'47"W 47.44'
3. N25°38'41"E 41.99'
4. N9°44'09"W 105.12'
5. N27°21'28"E 30.87'
6. N41°00'05"E 68.11'
7. N4°20'29"W 60.88'
8. S74°46'59"W 35.81'
9. N14°20'47"W 12.63'
10. N14°20'47"W 90.83'
11. N83°01'16"E 55.10'
12. N68°20'33"E 33.56'
13. N22°41'12"E 45.67'
14. N10°15'38"W 45.53'
15. N57°39'31"E 54.52'
16. S0°26'06"E 17.32'



SEE MAP 3003W27

SEE MAP 3003W27

SEE MAP 3003W34A

SEE MAP 3003W23

SEE MAP 3003W35

SEE MAP 3003W25

SEE MAP 3003W25

Lower Right:
123°1'3"W 42°55'45"N
4247175E 470261N ft