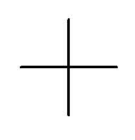


THIS MAP WAS PREPARED FOR ASSESSMENT PURPOSE ONLY.

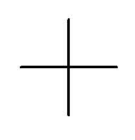
SE1/4 NE1/4 SEC.25 T30S. R.3W. W.M.
DOUGLAS COUNTY
1" = 100'

REVISED ON
7-23-02

30 3 25AD



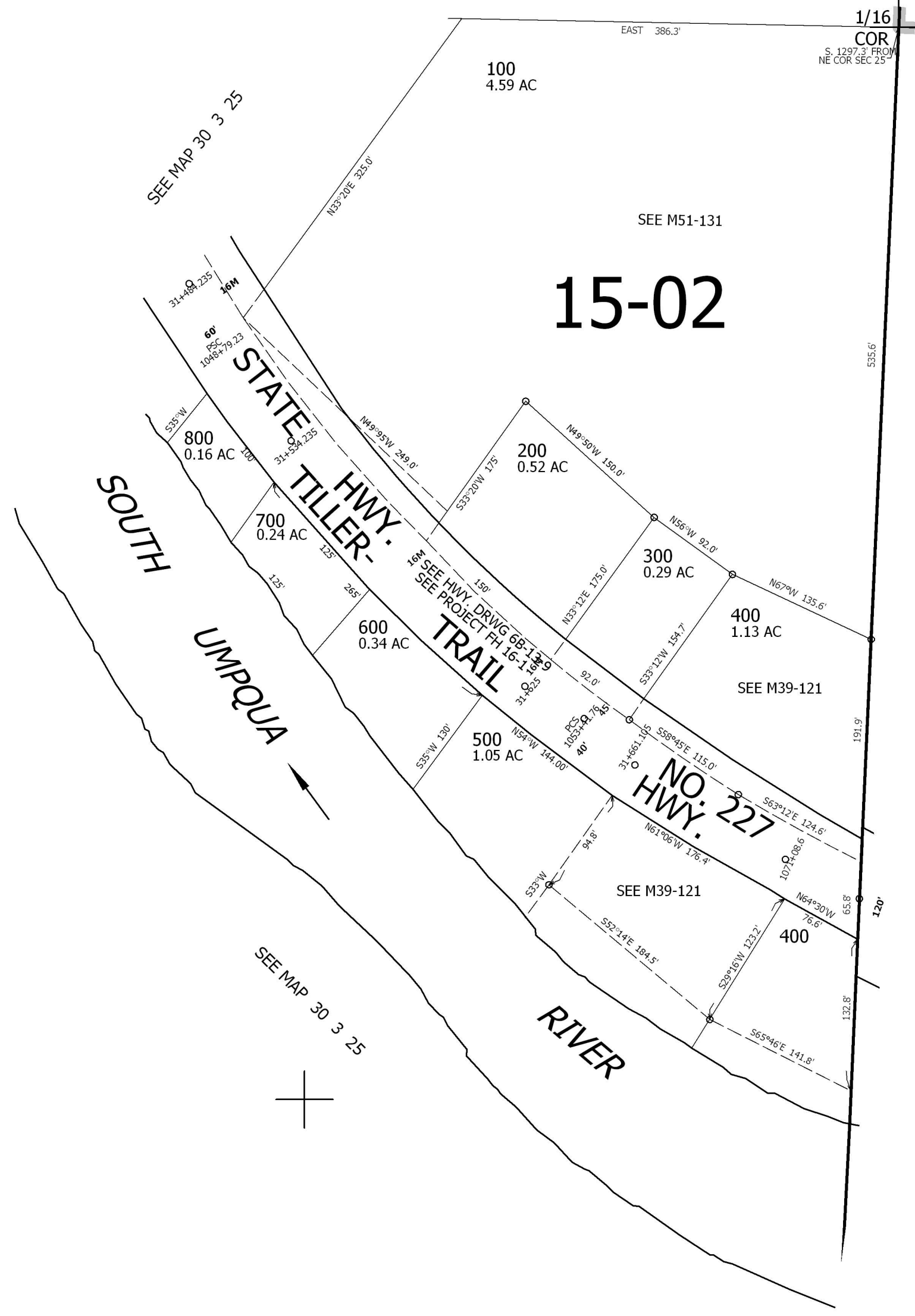
1/16 COR



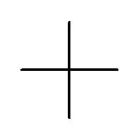
SEE MAP 30 3 25

1/16 COR
S. 1297.3' FROM
NE COR SEC 25

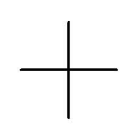
CANCELLED NO'S



SEE MAP 30 2 30



1/16 COR



SEE MAP 30 3 25

1/4 COR

474,000

4,251,000

30 3 25AD