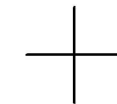
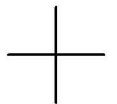


THIS MAP WAS PREPARED FOR ASSESSMENT PURPOSE ONLY.

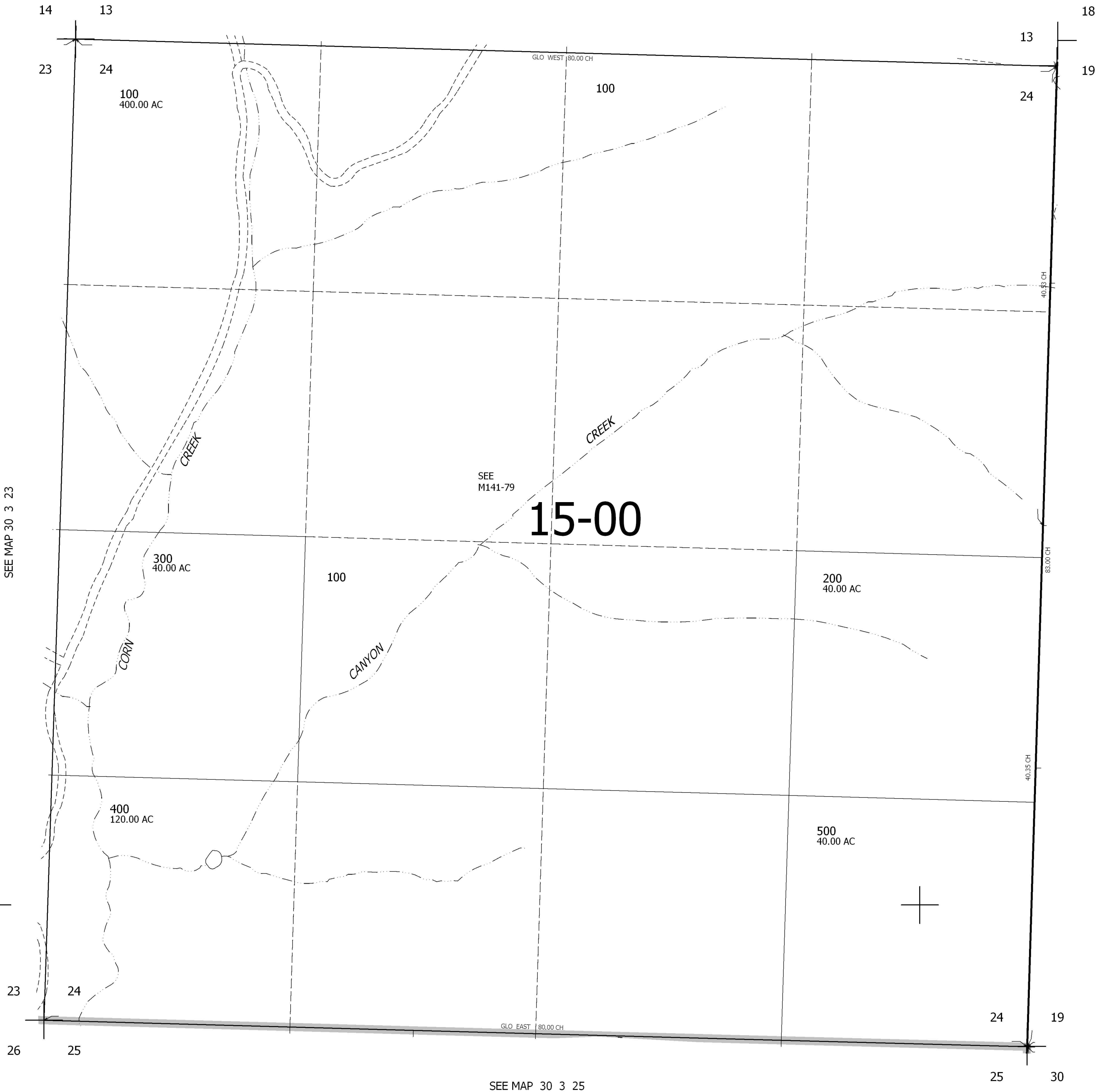
SEC.24 T30S. R.3W. W.M.  
DOUGLAS COUNTY  
1" = 400'

REVISED ON

30 3 24



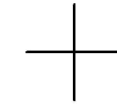
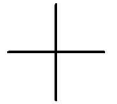
SEE MAP 30 3 00



CANCELLED NO'S  
100M1

SEE MAP 30 3 23

SEE MAP 30 2 00



SEE MAP 30 3 25

4,251,000

477,000

30 3 24