

THIS MAP WAS PREPARED FOR ASSESSMENT PURPOSE ONLY.

Upper Left:
123°7'29"W 42°59'20"N
4219119E 492912N ft

SEC.07 T.30S. R.03W. W.M.
DOUGLAS COUNTY
1" = 400'

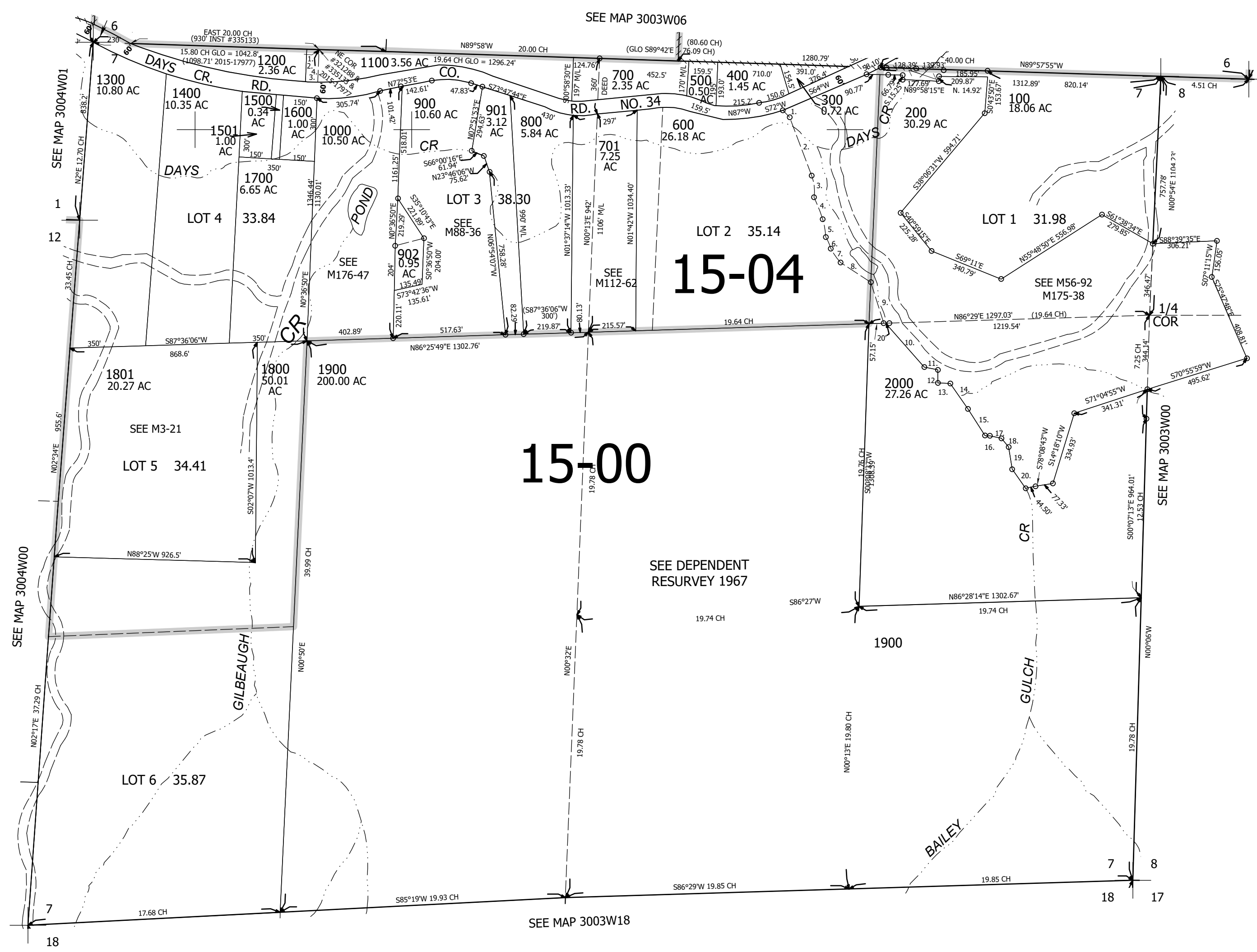
Date Exported 2024-07-29

300307

CANCELLED NOS:
1201

- PARCEL 2000
1. S44°52'E 42.6'
 2. S23°52'E 283.3'
 3. S8°34'E 99.9'
 4. S20°36'E 111.8'
 5. S14°53'E 87.4'
 6. S21°58'E 63.2'
 7. S37°18'E 79.6'
 8. S58°38'E 154.7'
 9. S23°21'E 192.3'
 10. N44°24'W 276.02'
 11. N85°53'W 64.26'
 12. N6°35'E 63.32'
 13. S88°55'W 66.35'
 14. N36°20'W 142.14'
 15. N37°18'W 142.6'
 16. S87°20'W 26.84'
 17. N76°55'W 69.91'
 18. N38°33'W 46.02'
 19. N11°42'W 106.78'
 20. N36°20'W 102.77'

- PARCEL 1100
NE COR OF
INST #335133 =
1160' FROM NW COR SEC 7
GRANTOR ONLY OWNED
LOT 4 PER #321288
1. N89°58'23"W 55.9'
 2. S0°36'50"W 156.79'
 3. N87°51'02"E 55.97'
 4. N0°36'50"E 154.66'



15-04

15-00

SEE DEPENDENT
RESURVEY 1967

300307

Lower Right:
123°5'41"W 42°58'14"N
422696E 485957N ft