

THIS MAP WAS PREPARED FOR ASSESSMENT PURPOSE ONLY.

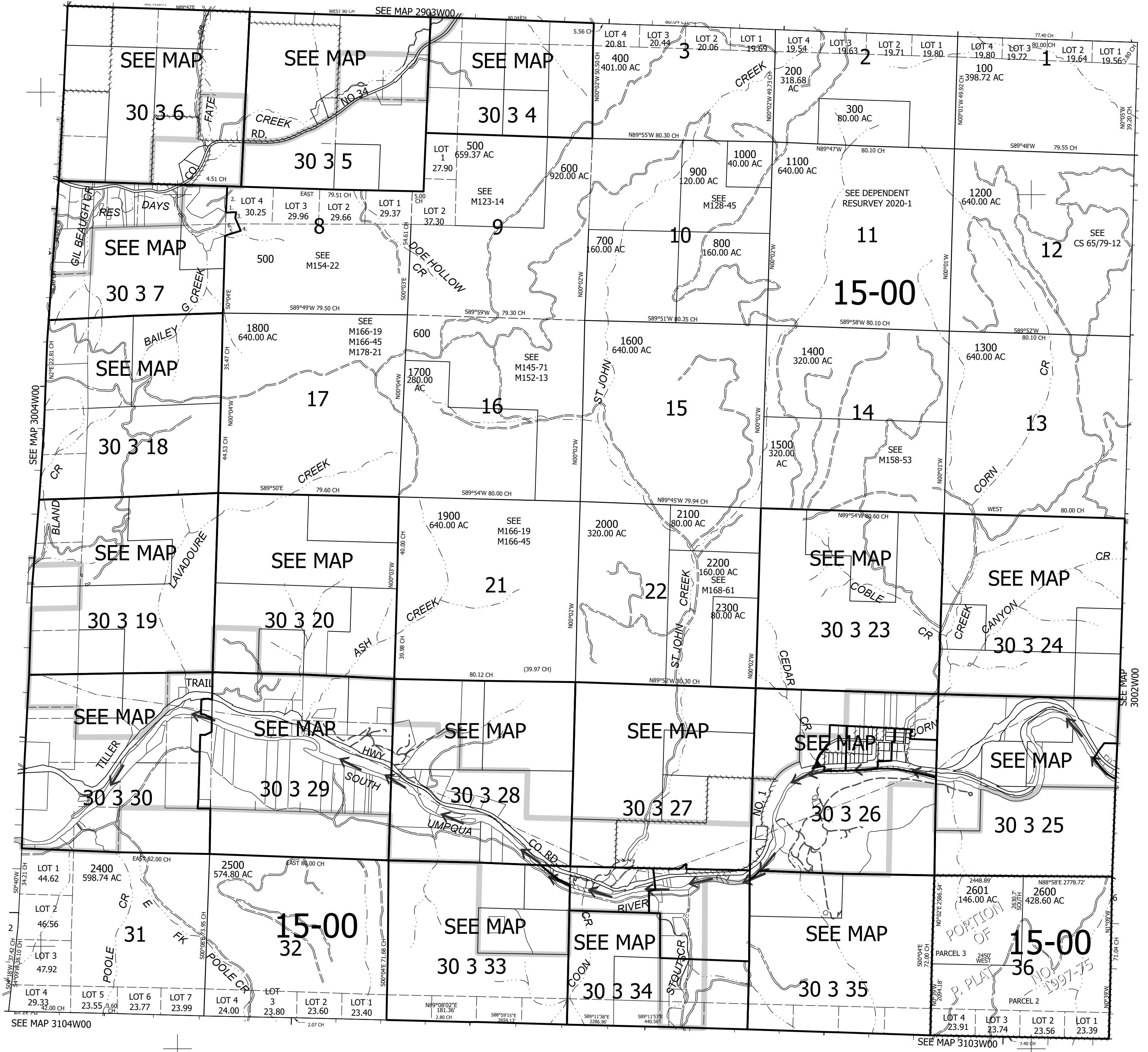
Upper Left:
123°8'15"W 43°0'17"N
4215903E 498776N ft

T.30S. R.03W. W.M.
DOUGLAS COUNTY
1" = 2,000'

Date Exported 2026-03-18

CANCELLED NOS:
500M1 500M2 600M1
600M2 1000M1 1200M1
1400M1 1500M1 2000M1

- PARCEL 500
1. N0°54'E 346.47'
 2. S89°39'E 306.4'
 3. S7°13'W 156.1'
 4. S25°47'E 406.88'
 5. S70°54'W 495.82'
 6. N0°07'W 344.14'



Lower Right:
122°59'13"W 42°54'46"N
4255149E 464000N ft