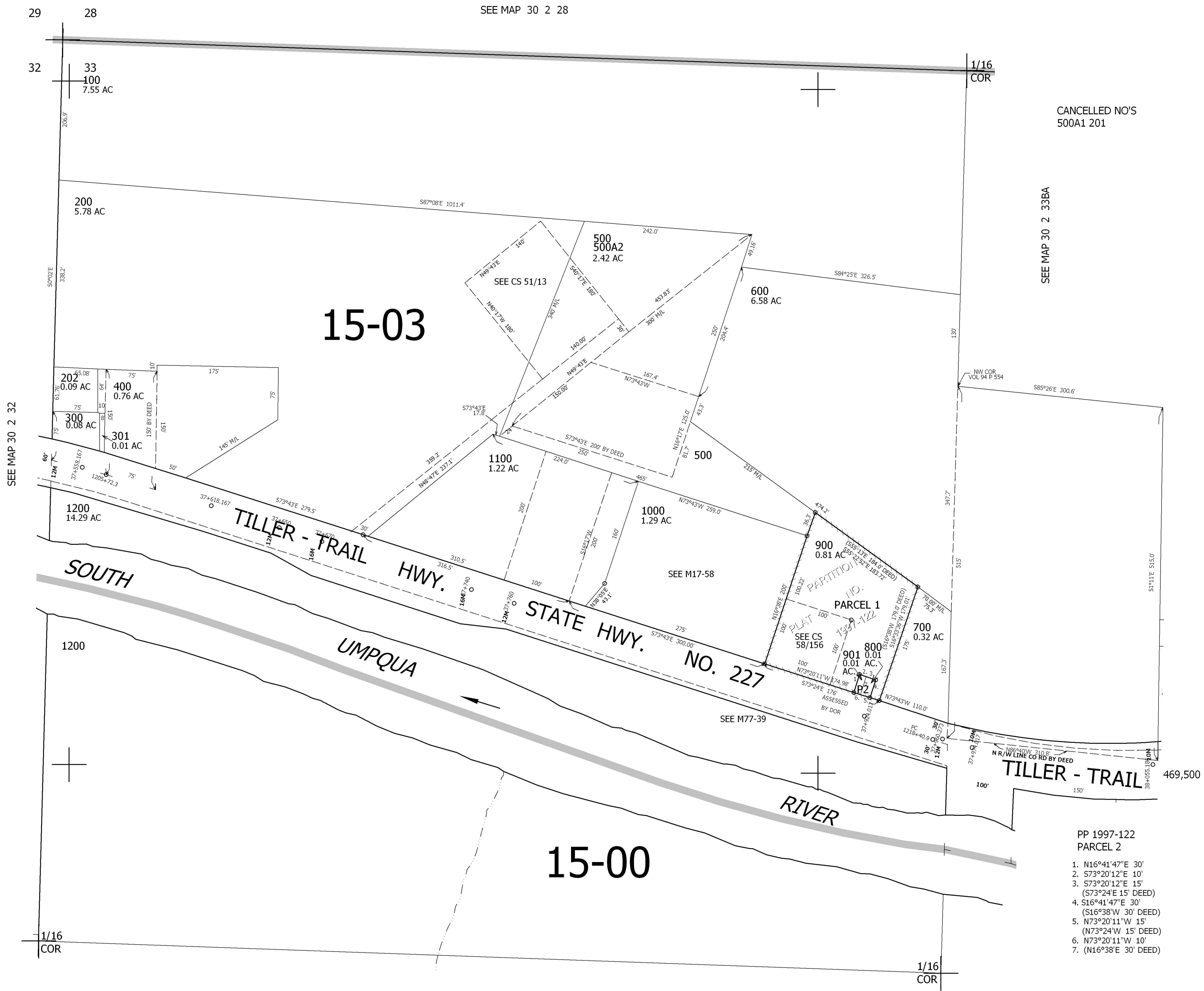


THIS MAP WAS PREPARED FOR ASSESSMENT PURPOSE ONLY.

NW1/4 NW1/4 SEC.33 T30S. R.2W. W.M.  
DOUGLAS COUNTY  
1" = 100'

REVISED ON  
4-17-01

30 2 33BB



CANCELLED NO'S  
500A1 201

SEE MAP 30 2 33BA

SEE MAP 30 2 32

SEE MAP 30 2 28

15-03

15-00

- PP 1997-122  
PARCEL 2
1. N16°41'47"E 30'
  2. S73°20'12"E 10'
  3. S73°20'12"E 15'  
(S73°24'E 15' DEED)
  4. S16°41'47"E 30'  
(S16°38'W 30' DEED)
  5. N73°20'11"W 15'  
(N73°24'W 15' DEED)
  6. N73°20'11"W 10'
  7. (N16°38'E 30' DEED)

SEE MAP 30 2 33

4,263,000

30 2 33BB