

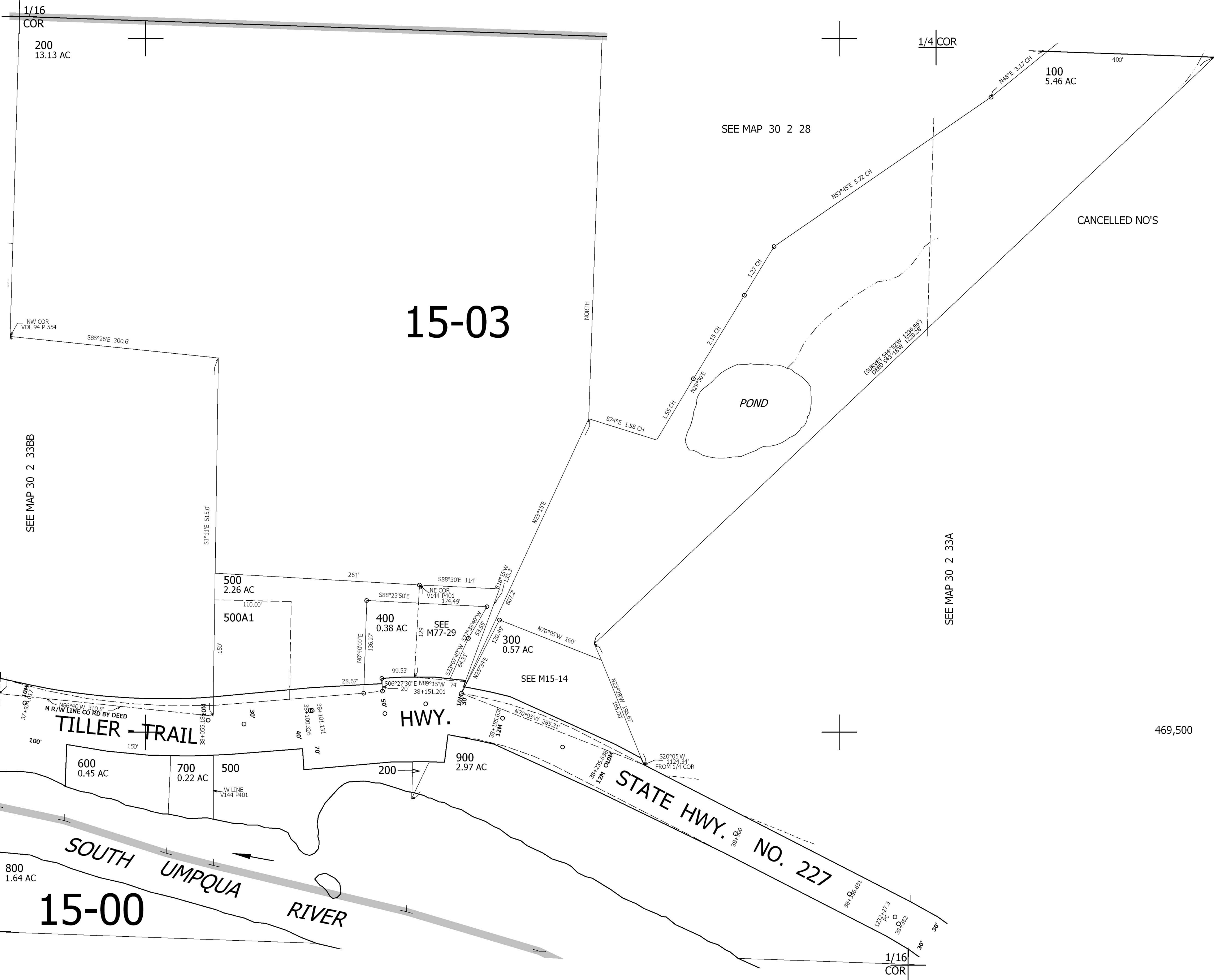
THIS MAP WAS PREPARED FOR ASSESSMENT PURPOSE ONLY.

NE1/4 NW1/4 SEC.33 T30S. R.2W. W.M.
DOUGLAS COUNTY
1" = 100'

REVISED ON
8-3-01

30 2 33BA

SEE MAP 30 2 28



SEE MAP 30 2 33BB

SEE MAP 30 2 28

SEE MAP 30 2 33A

SEE MAP 30 2 33

469,500

4,264,000

30 2 33BA