

THIS MAP WAS PREPARED FOR ASSESSMENT PURPOSE ONLY.

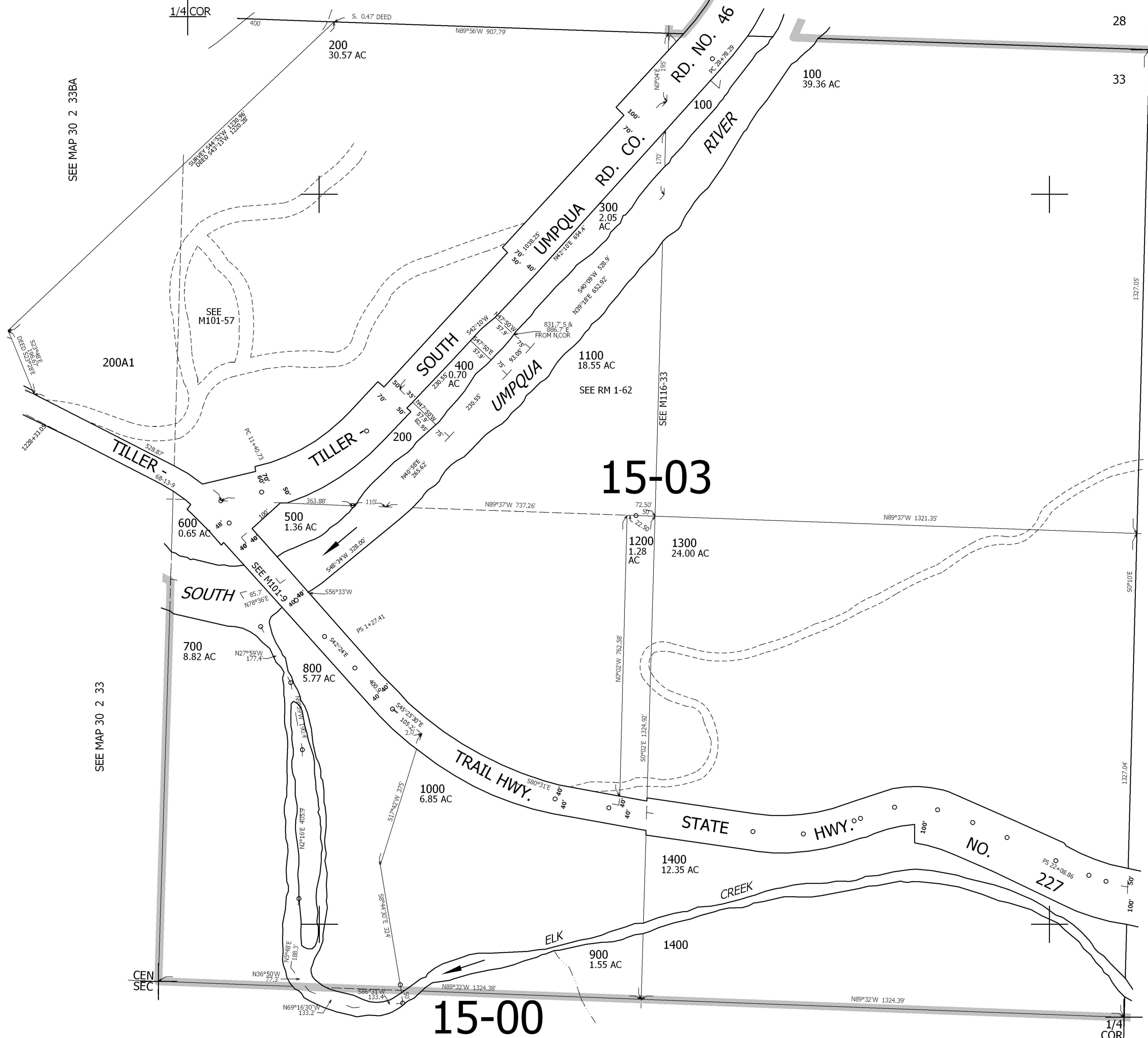
NE1/4 SEC.33 T30S. R.2W. W.M. DOUGLAS COUNTY
1" = 200'

REVISED ON 1-14-02

30 2 33A

SEE MAP 30 2 28

SEE MAP 30 2 33BA



CANCELLED NO'S 1100A1

SEE MAP 30 2 34

SEE MAP 30 2 33

SEE MAP 30 2 33

468,000

4,267,000

30 2 33A