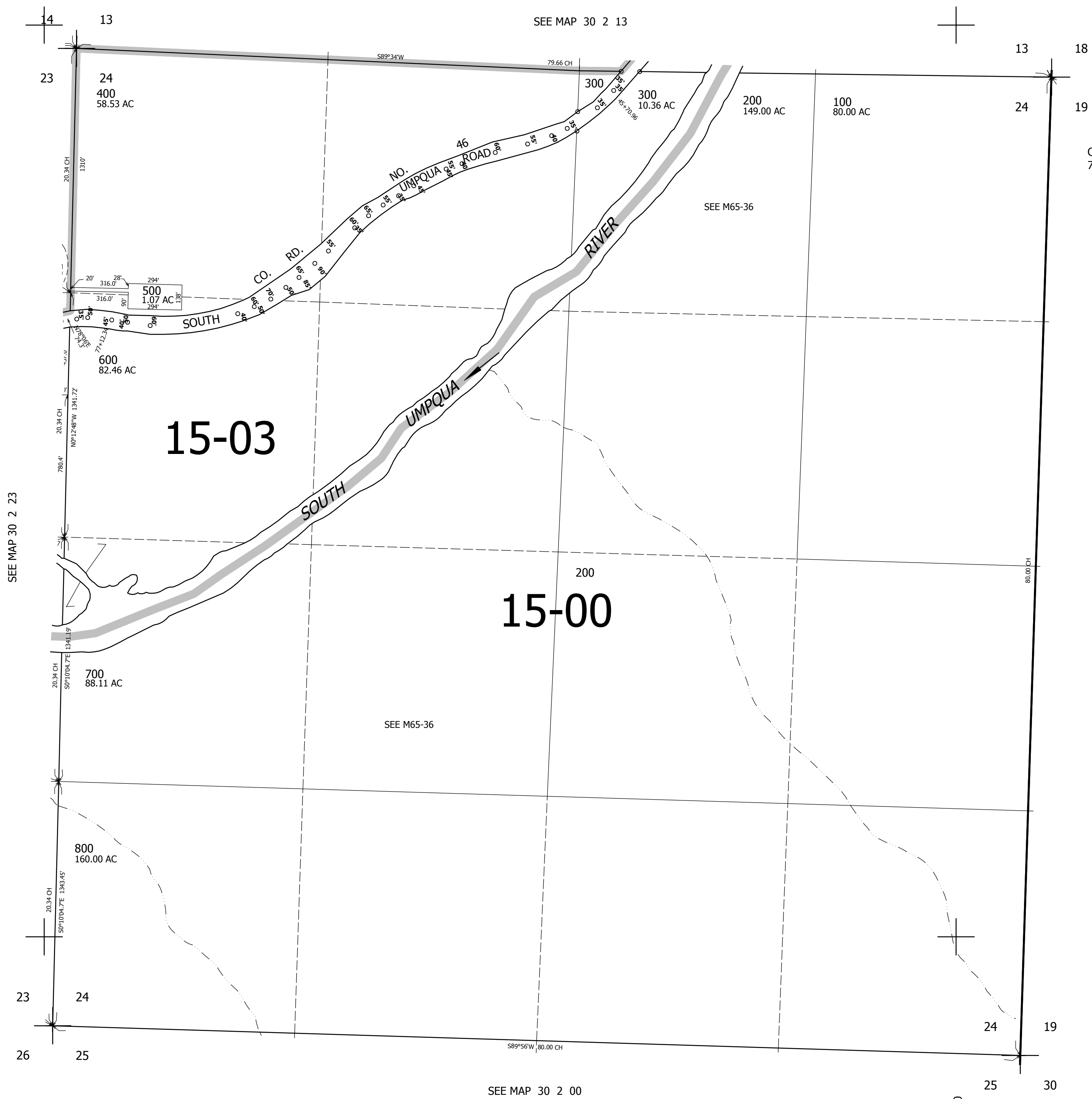


THIS MAP WAS PREPARED FOR ASSESSMENT PURPOSE ONLY.

SEC.24 T30S. R.2W. W.M.
DOUGLAS COUNTY
1" = 400'

REVISED ON

30 2 24



CANCELLED NO'S
700M1

SEE MAP 30 2 23

SEE MAP 30 1 19

SEE MAP 30 2 00

4,283,000

476,000

30 2 24