

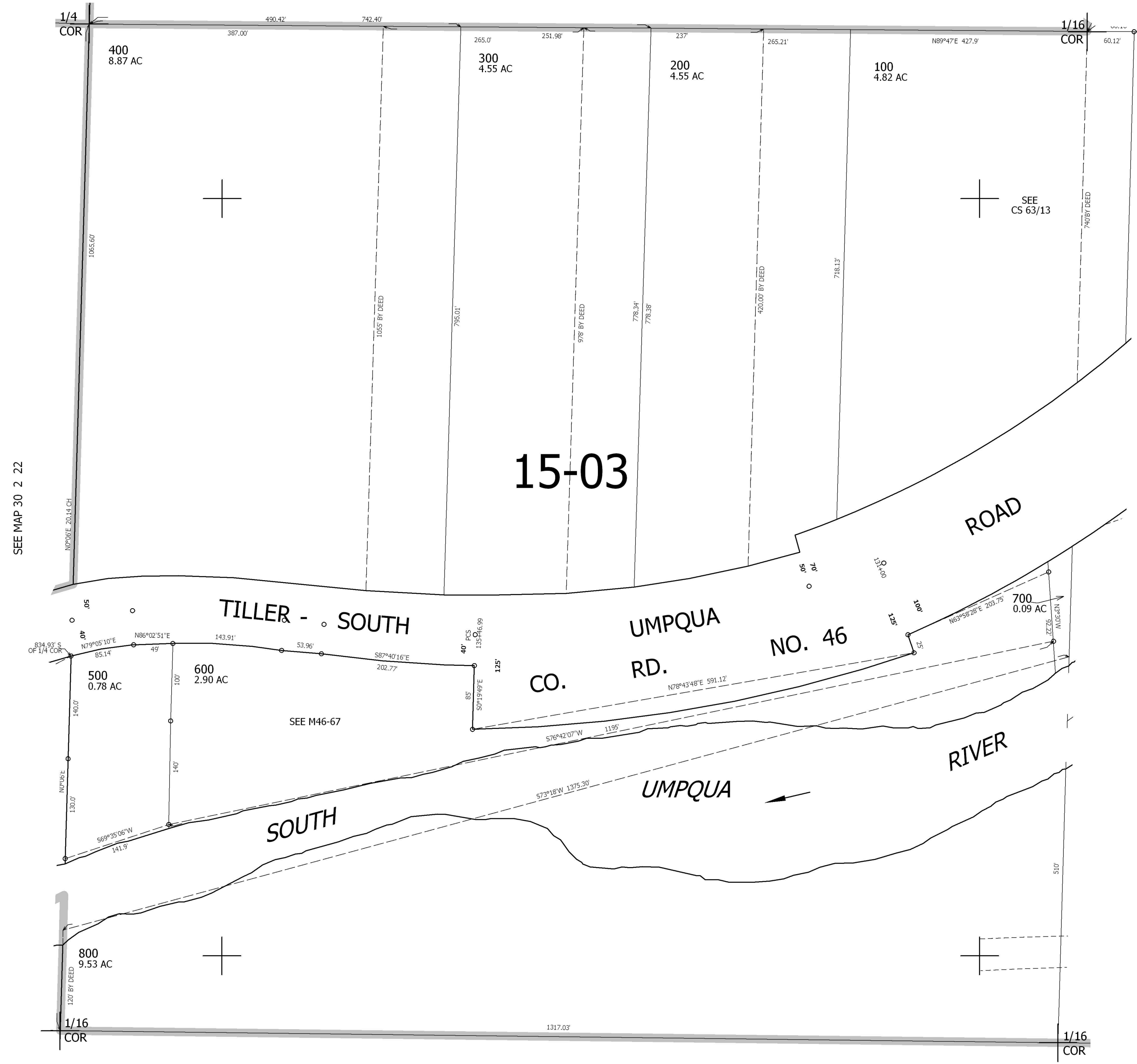
THIS MAP WAS PREPARED FOR ASSESSMENT PURPOSE ONLY.

NW1/4 SW1/4 SEC.23 T30S. R.2W. W.M.
DOUGLAS COUNTY
1" = 100'

REVISED ON
1-22-02

30 2 23CB

SEE MAP 30 2 23



15-03

CANCELLED NO'S

SEE MAP 30 2 22

SEE MAP 30 2 23CA

477,000

SEE MAP 30 2 23

4,274,000

30 2 23CB