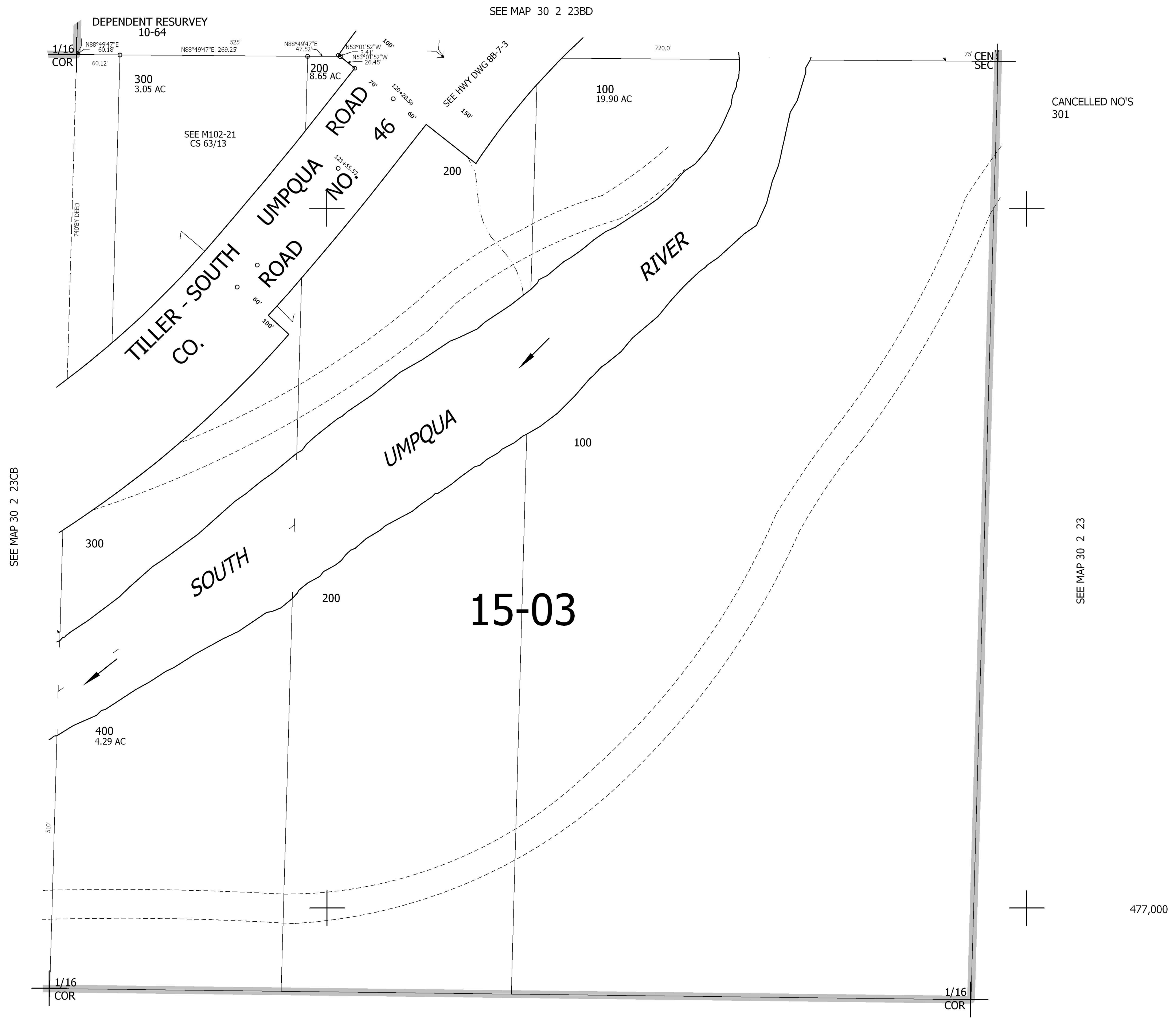


THIS MAP WAS PREPARED FOR ASSESSMENT PURPOSE ONLY.

NE1/4 SW1/4 SEC.23 T30S. R.2W. W.M.  
DOUGLAS COUNTY  
1" = 100'

REVISED ON  
1-22-02

30 2 23CA



SEE MAP 30 2 23BD

CANCELLED NO'S  
301

SEE MAP 30 2 23CB

SEE MAP 30 2 23

SEE MAP 30 2 23

477,000

4,275,500

30 2 23CA