

THIS MAP WAS PREPARED FOR ASSESSMENT PURPOSE ONLY.

Upper Left:  
122°55'8"W 42°57'26"N  
4273823E 479692N ft

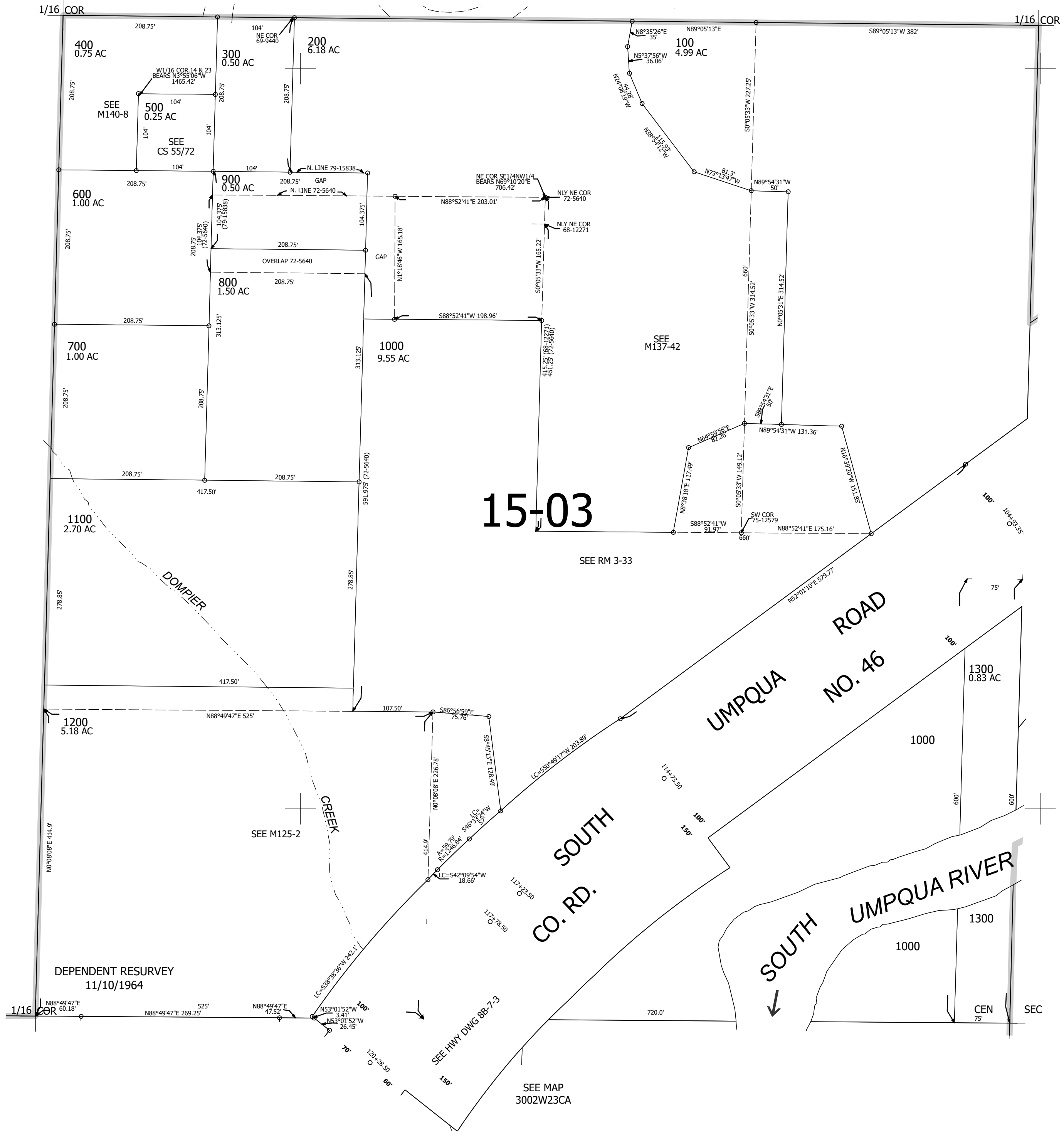
SE1/4 NW1/4 SEC.23 T.30S. R.02W. W.M.  
DOUGLAS COUNTY  
1" = 100'

Date Exported 2024-06-25

300223BD

CANCELLED NOS:  
1001 1002 101 102 201 202

SEE MAP  
3002W23



300223BD

Lower Right:  
122°54'41"W 42°57'9"N  
4275785E 477953N ft