

THIS MAP WAS PREPARED FOR ASSESSMENT PURPOSE ONLY.

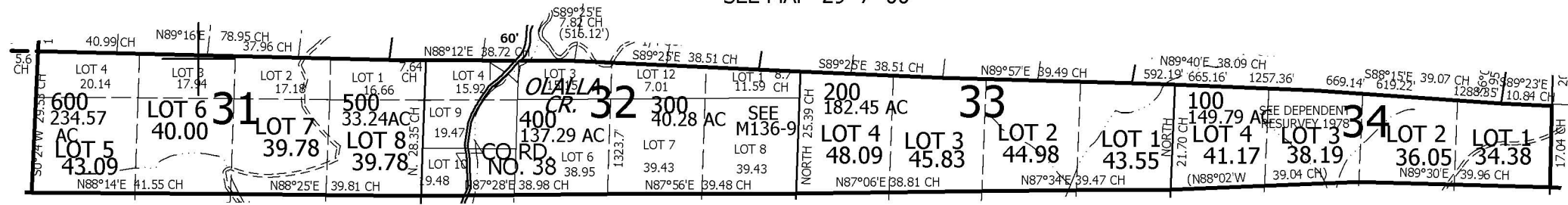
T.29 1/2S. R.7W. W.M.
DOUGLAS COUNTY
1" = 2000'

REVISED ON

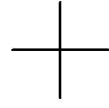
29V 7 00

SEE MAP 29 7 00

SEE MAP 29 8 00

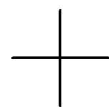
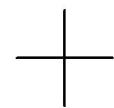


SEE MAP 29 7 00



CANCELLED NO'S

SEE MAP 30 7 00



477,000

4,124,000

29V 7 00