

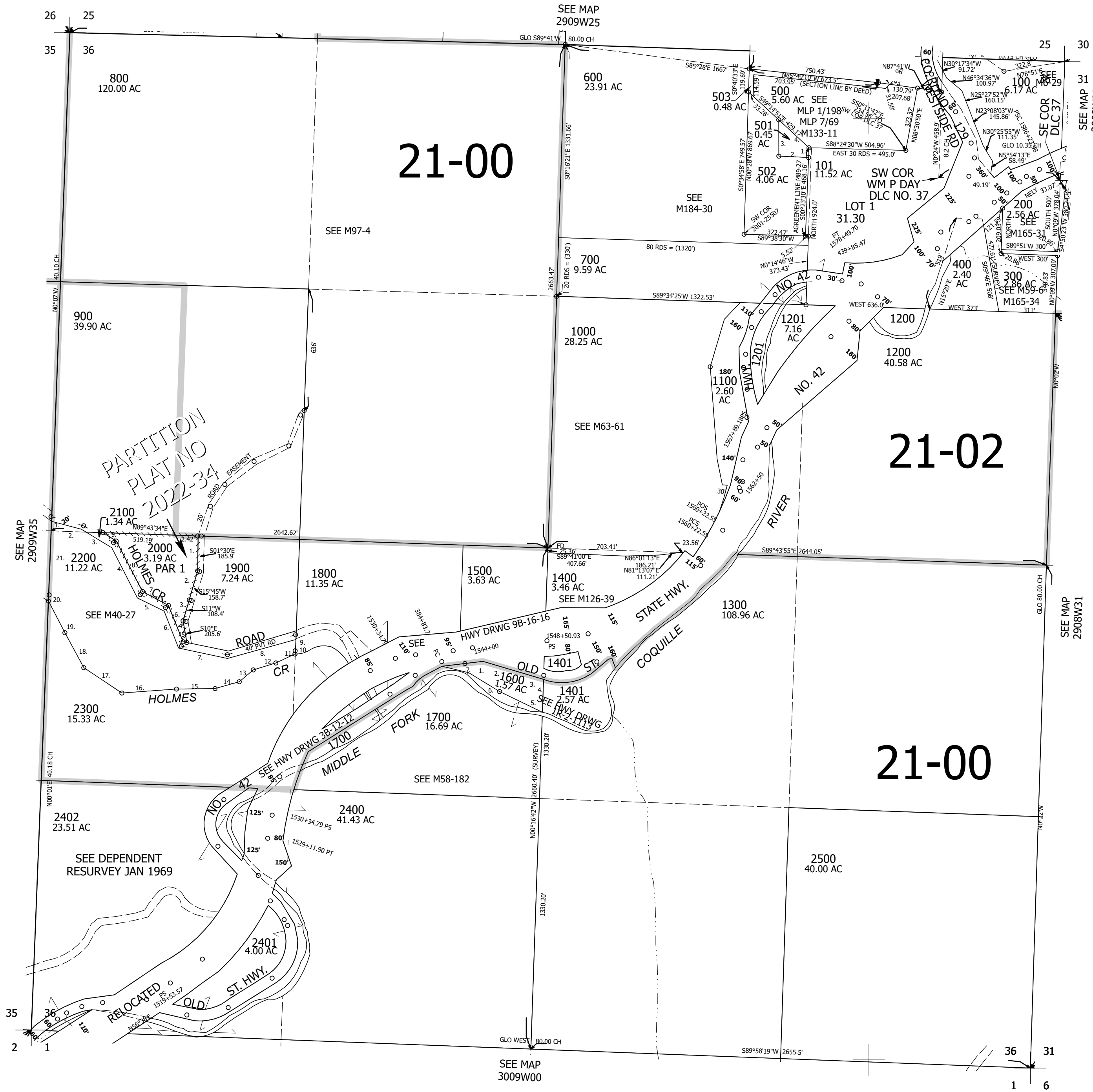
THIS MAP WAS PREPARED FOR ASSESSMENT PURPOSE ONLY.

Upper Left:
123°43'38"W 43°0'46"N
4058367E 507185N ft

SEC.36 T.29S. R.09W. W.M.
DOUGLAS COUNTY
1" = 400'

CANCELLED NOS:
1701 1402 1300M1
2500M1 102 201

- PARCEL 501
1. S0°23'30"E 52.12'
 2. N89°18'40"W 158.09'
 3. N2°09'W 192.93'
 4. S49°14'51"E 218.04'
- PARCEL 2200
1. N0°05'E 80'
 2. S74°35'E 181.67'
 3. S61°27'E 196.25'
 4. S28°34'E 304.55'
 5. S62°29'E 154.74'
 6. S23°15'E 217.58'
 7. S79°40'E 252.52'
 8. N71°57'E 383.7'
 9. S1°45'W 76.21'
 10. S1°45'W 24.79'
 11. S61°26'W 110.49'
 12. S71°03'W 127.29'
 13. S51°31'W 99.79'
 14. S70°54'W 135.85'
 15. S88°31'30"W 204.25'
 16. S84°46'W 298.12'
 17. N58°W 247.63'
 18. N28°38'30"W 206.73'
 19. N27°13'W 203.56'
 20. N0°05'E 36'
 21. N0°05'E 331.4'
- PARCEL 1600
1. LC=N85°27'E 243.81'
 2. S75°48'E 298.4'
 3. LC=S84°25'E 94.83'
 4. S3°02'E 200'
 5. N64°53'45"W 322.56'
 6. N66°12'W 266.3'
 7. N79°40'30"W 103.21'
- PARCEL 2000
1. S0°39'17"E 172.44'
 2. S15°48'20"W 157.87'
 3. S10°56'47"W 110.55'
 4. S9°58'48"E 160.59'
 5. N79°43'56"W 27.87'
 6. N23°18'56"W 213.98'
 7. N62°32'56"W 155.77'
 8. N28°37'56"W 304.35'
 9. N61°32'34"W 101'



Lower Right:
123°41'49"W 42°59'40"N
4066217E 500230N ft