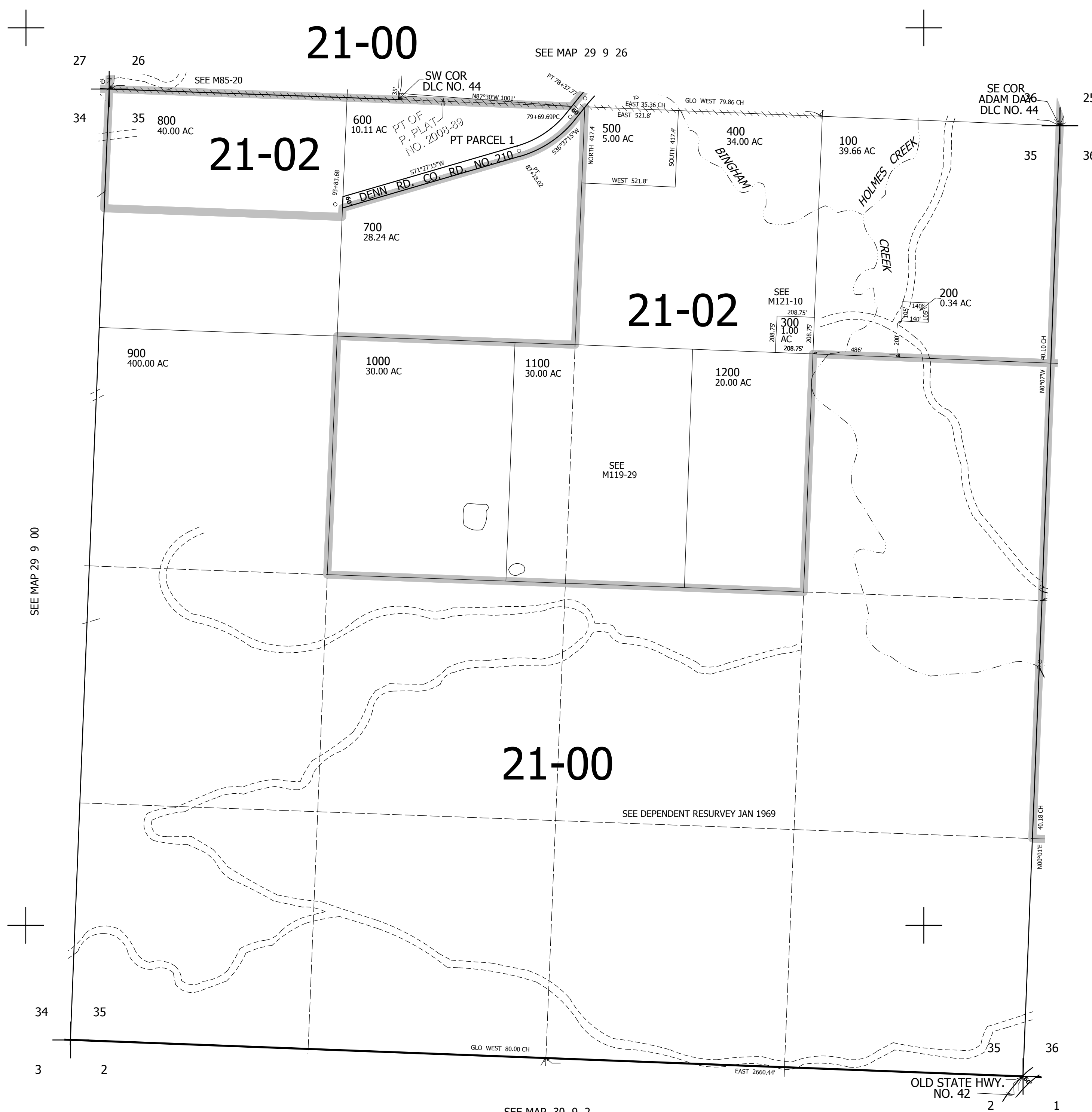


THIS MAP WAS PREPARED FOR ASSESSMENT PURPOSE ONLY.

SEC.35 T.29S. R.9W. W.M.
DOUGLAS COUNTY
1" = 400'

REVISED ON
7-6-11

29 9 35



CANCELLED NO'S

SEE MAP 29 9 36

502,000

4,059,000

29 9 35