

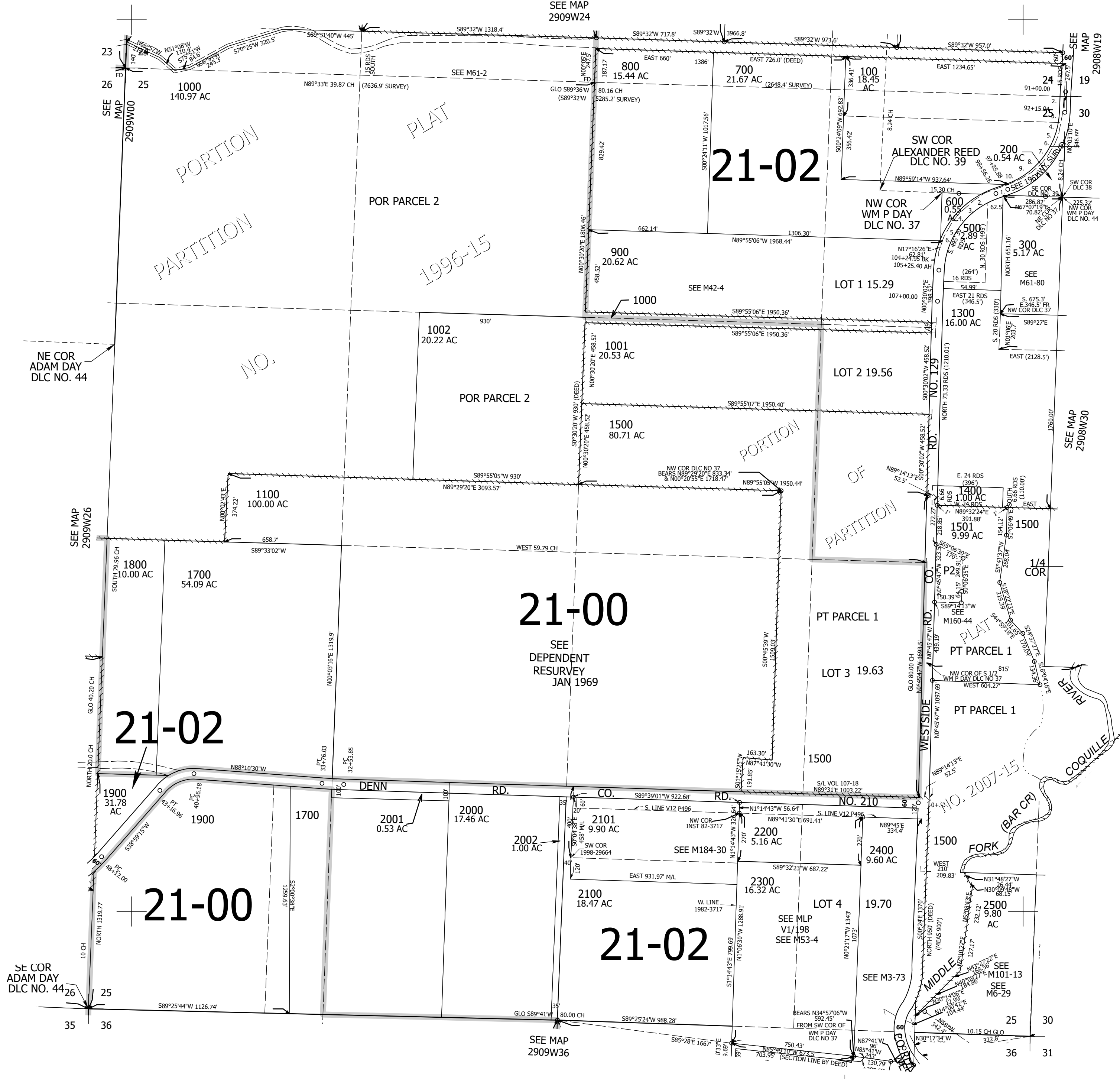
THIS MAP WAS PREPARED FOR ASSESSMENT PURPOSE ONLY.

Upper Left:  
123°43'39"W 43°1'39"N  
4058482E 512526N ft

SEC.25 T.29S. R.09W. W.M.  
DOUGLAS COUNTY  
1" = 400'

- PARCEL 600 & 700
1. S68°38'41"W 138.44'
  2. S54°20'54"W 72.45'
  3. S46°40'31"W 111.88'
  4. S37°50'29"W 65.03'
  5. S27°23'56"W 95.5'
  6. S17°16'26"W 21.78'
- PARCEL 100
1. S0°44'31"W 180.41'
  2. S4°19'22"W 112.31'
  3. S9°14'22"W 44.87'
  4. S9°14'22"W 71.51'
  5. S20°55'24"W 54.1'
  6. S28°41'32"W 77.7'
  7. S37°57'24"W 61.99'
  8. S47°40'07"W 69.56'
  9. S57°21'16"W 65.3'
  10. S63°08'59"W 79.98'

CANCELLED NOS:  
300M1 2201 2301  
1003 1200 1600  
2501 1502 1503  
400 2102



SE COR ADAM DAY DLC NO. 44

NE COR ADAM DAY DLC NO. 44

Lower Right:  
123°41'50"W 43°0'33"N  
4066331E 505571N ft