

THIS MAP WAS PREPARED FOR ASSESSMENT PURPOSE ONLY.

Upper Left:
123°43'38"W 43°4'16"N
4059210E 528403N ft

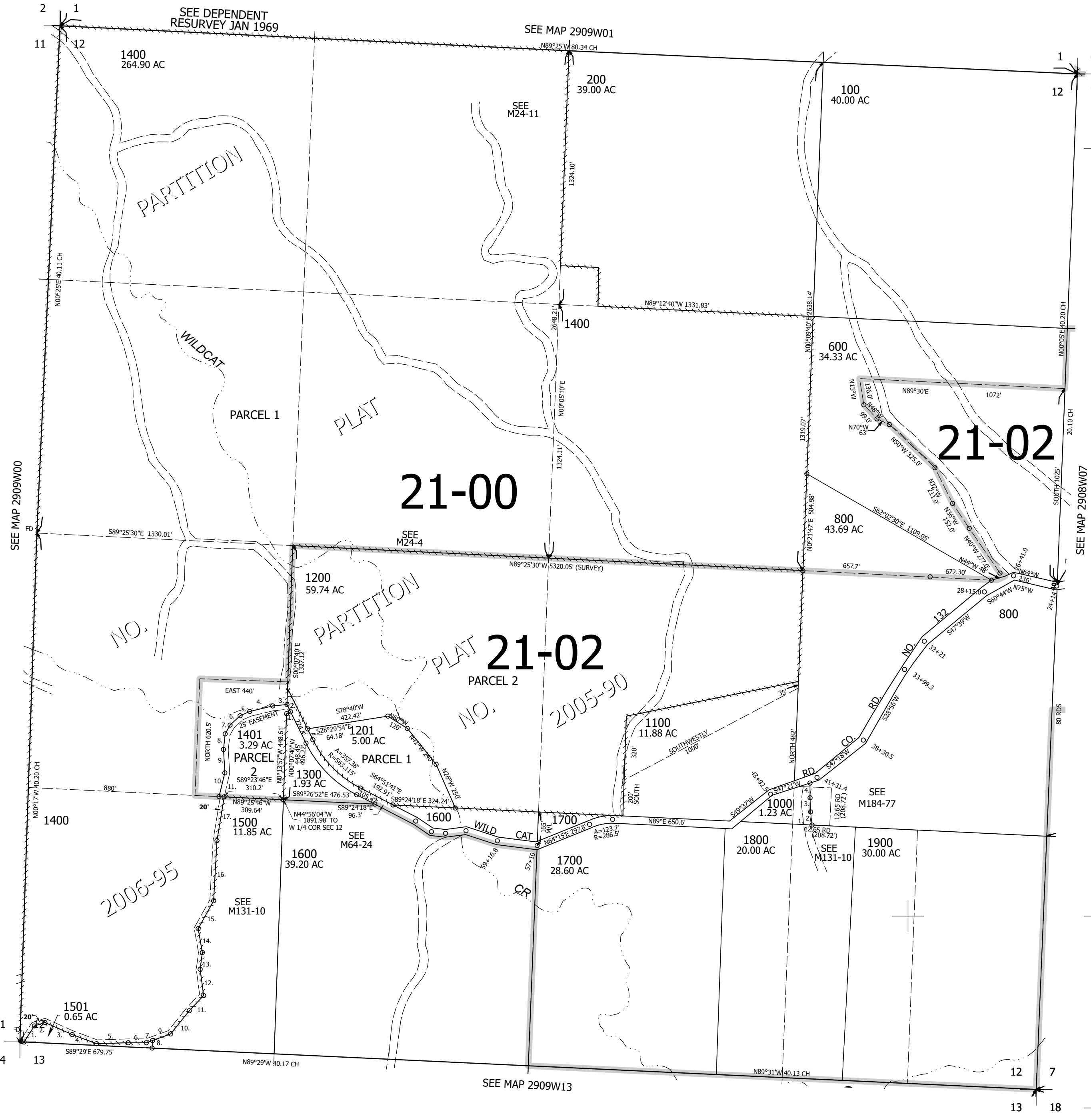
SEC.12 T.29S. R.09W. W.M.
DOUGLAS COUNTY
1" = 400'

Date Exported 2025-07-10

290912

CANCELLED NOS:
400 900 300 1801 1400A1
701 500 700
801

- PARCEL 1401
- N63°44'15"E 22.82'
 - N28°34'40"W 42.9'
 - S81°58'25"W 73.77'
 - S74°16'09"W 123.38'
 - S63°34'W 54.76'
 - S44°45'08"W 71.68'
 - S27°00'32"W 52.26'
 - S3°58'18"W 81.42'
 - S5°33'09"E 122.09'
 - S11°20'20"W 127.04'
 - S89°26'07"E 25.45'
- PARCEL 1500 & 1501
P.O.B. BEARS EAST 21.55'
FROM SW COR SEC 29 PER M131-10
- N30°32'43"E 99.49'
 - N69°29'43"E 57.67'
 - S68°18'17"E 155.54'
 - S71°43'17"E 135.57'
 - N86°05'43"E 165.26'
 - N87°53'43"E 93.86'
 - N67°47'43"E 34.59'
 - S0°31'W 39.67'
 - N67°47'43"E 100'
 - N36°37'43"E 155.13'
 - N41°15'43"E 109.21'
 - N9°49'17"W 137.96'
 - N5°10'43"E 88.49'
 - N12°13'17"W 125.93'
 - N26°49'43"E 166.38'
 - N0°55'43"E 313.9'
 - N7°07'43"E 231.71'
- PARCEL 1000
- S87°09'44"E 101.19'
 - N6°08'54"W 68.77'
 - N1°58'28"W 73.84'
 - N0°09'38"W 91.43'



290912

Lower Right:
123°41'49"W 43°3'10"N
4067060E 521448N ft