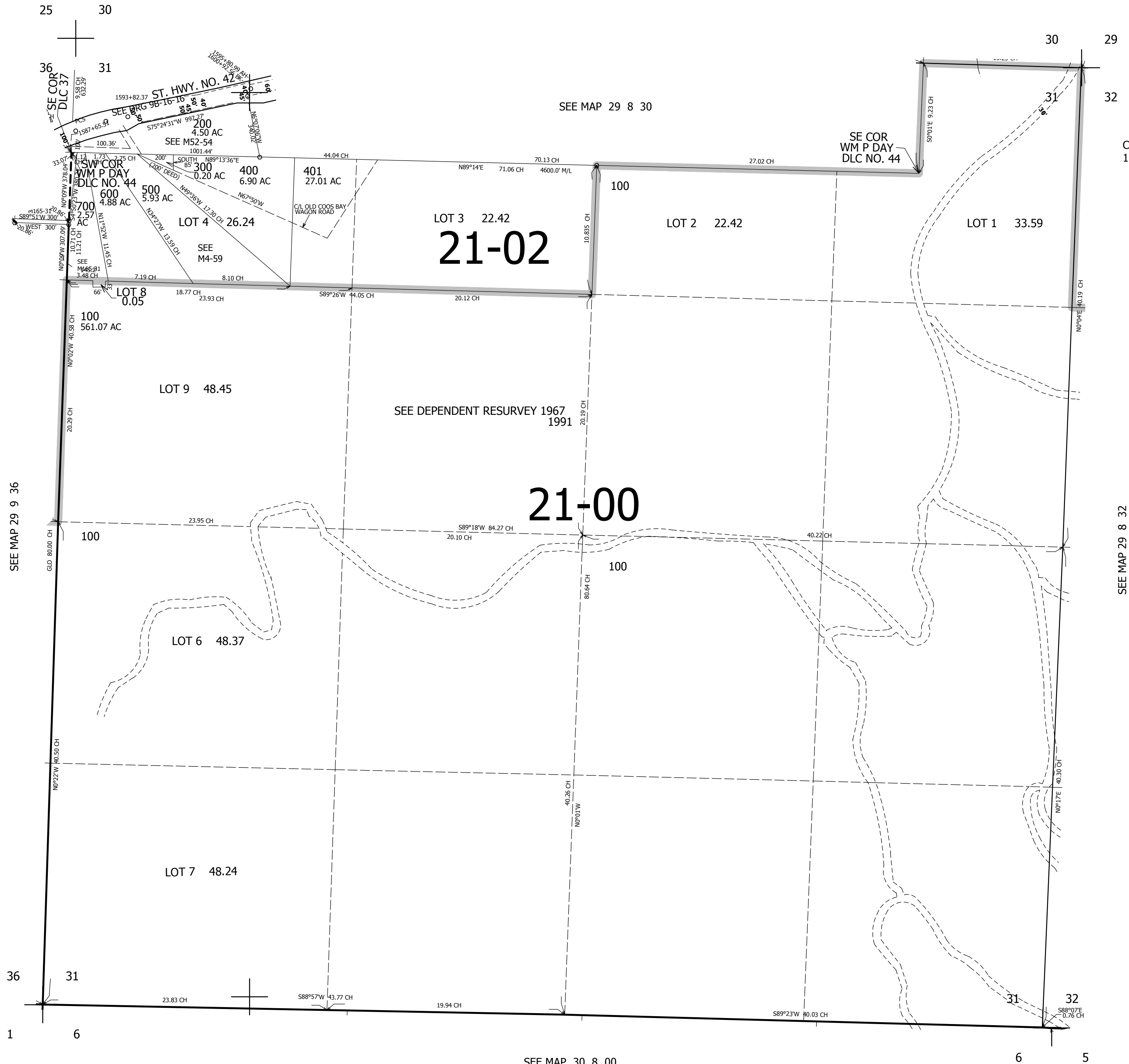


THIS MAP WAS PREPARED FOR ASSESSMENT PURPOSE ONLY.

SEC.31 T.29S. R.8W. W.M.
DOUGLAS COUNTY
1" = 400'

REVISED ON
11-18-15

29 8 31



CANCELLED NO'S
101 701

SEE MAP 29 8 32

501,000

4,071,000
29 8 31