

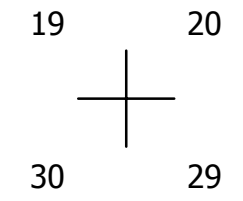
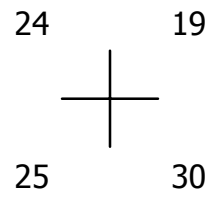
THIS MAP WAS PREPARED FOR ASSESSMENT PURPOSE ONLY.

SEC.30 T.29S. R.8W. W.M. DOUGLAS COUNTY

REVISED ON 2-25-13

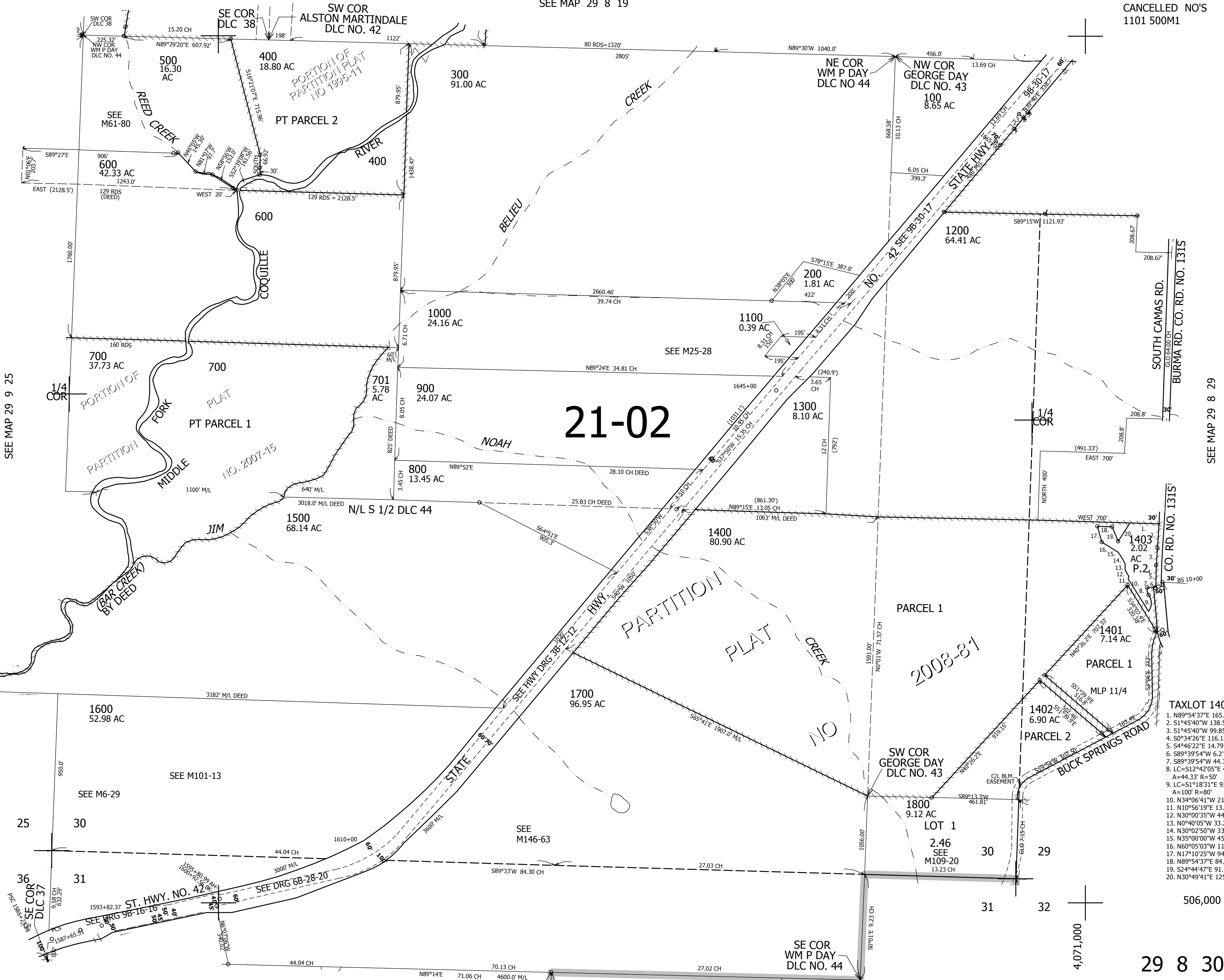
29 8 30

1" = 400'



CANCELLED NO'S 1101 500M1

SEE MAP 29 8 19



SEE MAP 29 9 25

SEE MAP 29 8 29

21-02

- TAXLOT 1403
1. N89°54'37"E 165.46'
2. S1°45'40"W 138.54'
3. S1°45'40"W 99.85'
4. S0°34'26"E 116.18'
5. S4°46'22"E 14.79'
6. S89°39'54"W 6.2'
7. S89°39'54"W 44.38'
8. LC=S12°42'05"E 42.89'
A=44.33' R=50'
9. LC=S1°18'31"E 93.61'
A=100' R=80'
10. N34°06'41"W 219.56'
11. N10°56'19"E 13.77'
12. N30°00'35"W 44.48'
13. N0°40'05"W 33.23'
14. N30°02'50"W 33.9'
15. N35°00'00"W 45'
16. N60°05'03"W 112.05'
17. N17°10'25"W 94.43'
18. N89°54'37"E 84.85'
19. S24°44'47"E 91.56'
20. N30°49'41"E 125.81'

506,000

29 8 30

SEE MAP 29 8 31