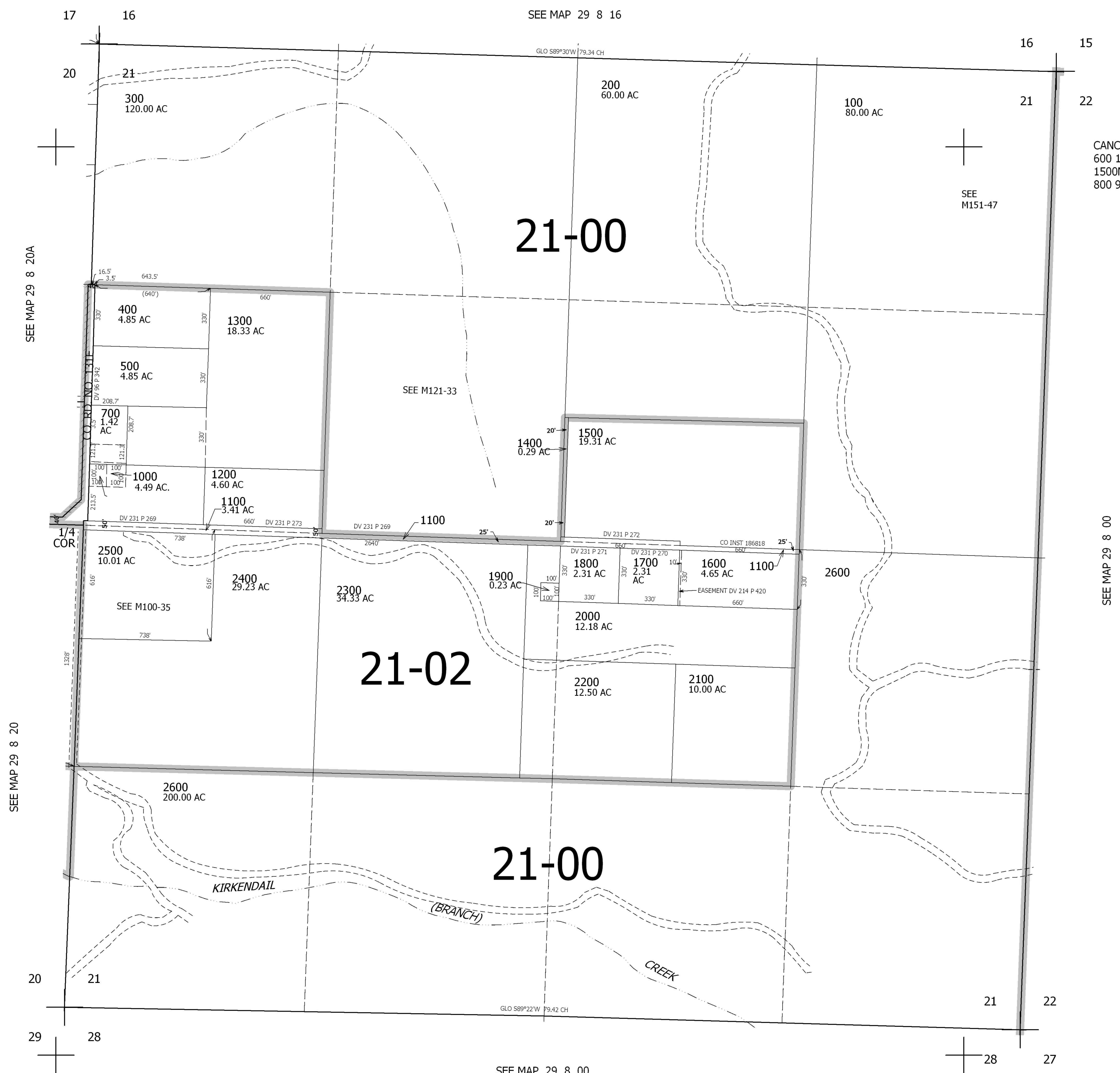


THIS MAP WAS PREPARED FOR ASSESSMENT PURPOSE ONLY.

SEC.21 T.29S. R.8W. W.M.
DOUGLAS COUNTY
1" = 400'

REVISED ON
11-15-95

29 8 21



CANCELLED NO'S
600 100M1 100M2
1500M1 2300M1 2400M1
800 900

29 8 21