

THIS MAP WAS PREPARED FOR ASSESSMENT PURPOSE ONLY.

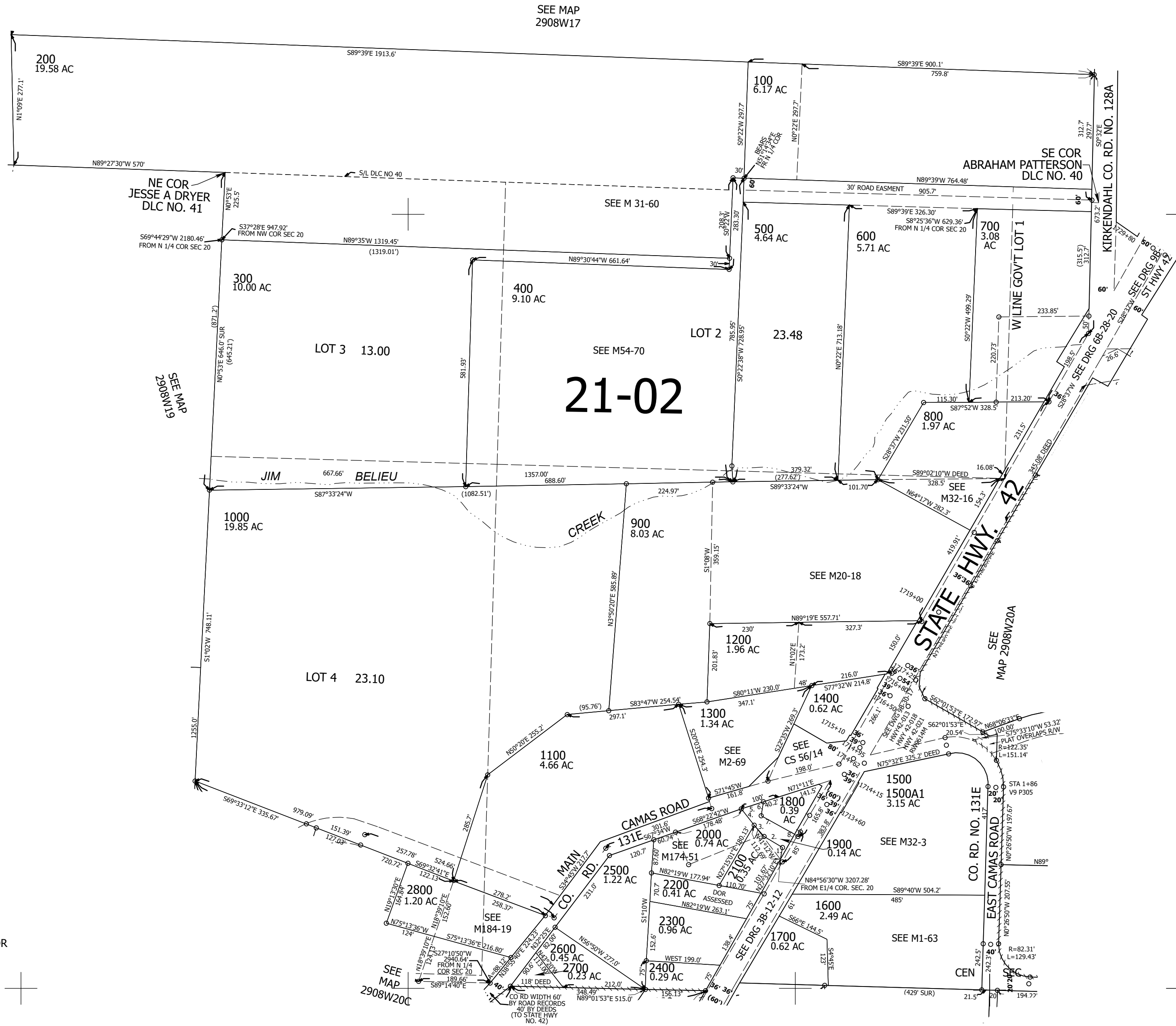
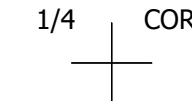
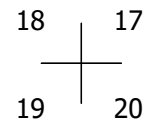
Upper Left:
123°41'W 43°2'27"N
4070512E 516926N ft

NW1/4 SEC.20 T.29S. R.08W. W.M.
DOUGLAS COUNTY
1" = 200'

Date Exported 2024-12-17

290820B

- PARCEL 1900
1. N07°23'01"E 29.89'
 2. N61°50'16"W 57.95'
 3. N44°08'57"W 38.74'
 4. N41°12'00"W 52.84'
 5. N68°22'42"E 59.83'
 6. S06°10'00"W 36.80'
 7. S62°43'00"E 101.73'
 8. S27°32'10"W 71.47'



1/4 COR

290820B

Lower Right:
123°40'5"W 43°1'54"N
4074437E 513449N ft