

THIS MAP WAS PREPARED FOR ASSESSMENT PURPOSE ONLY.

Upper Left:
123°40'30"W 43°2'27"N
4072711E 516938N ft

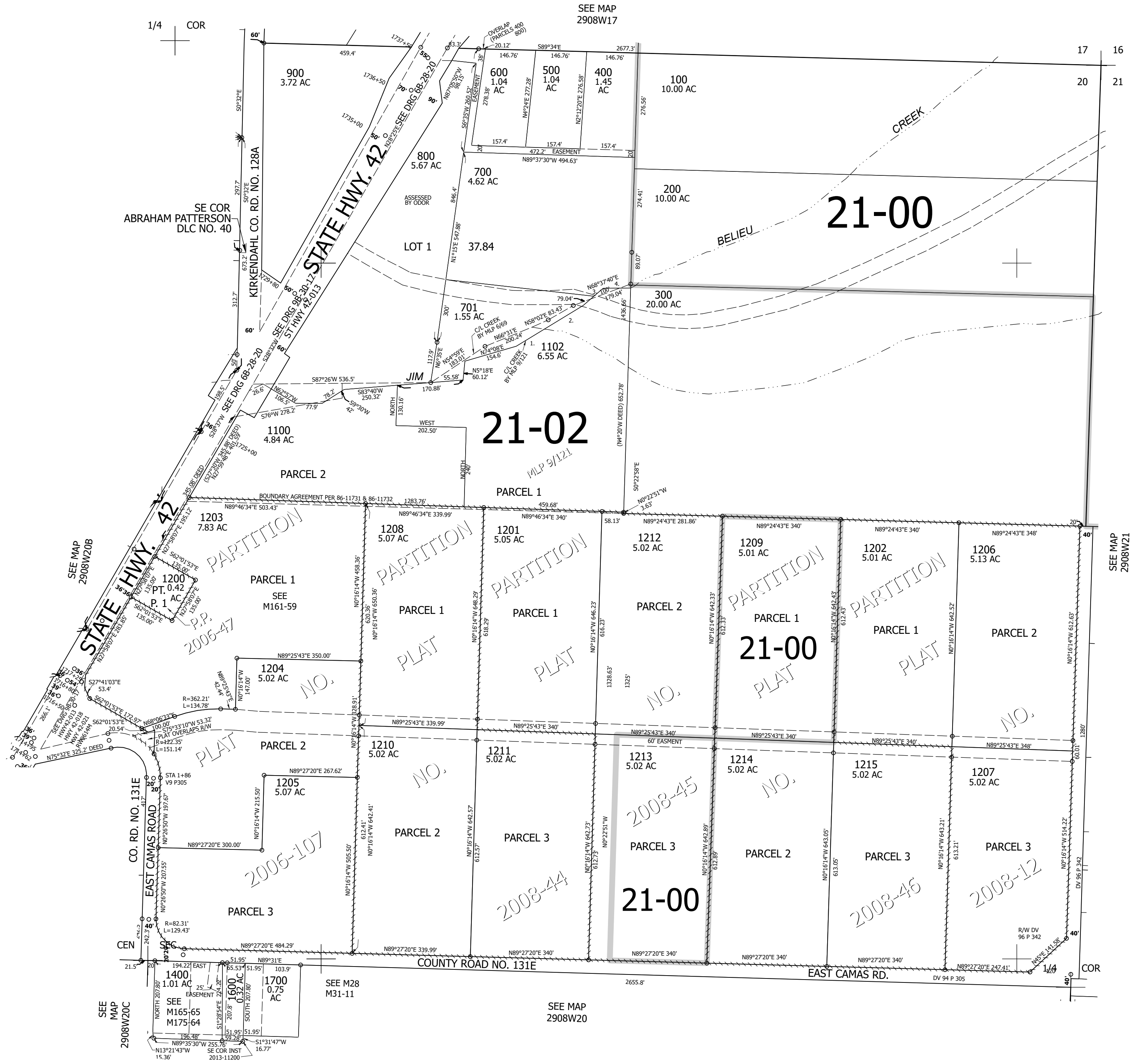
NE1/4 SEC.20 T.29S. R.08W. W.M.
DOUGLAS COUNTY
1" = 200'

Date Exported 2025-02-04

290820A

- PARCEL 1102
1. N58°34'E 80.6'
 2. N59°44'E 149.5'
 3. N51°06'E 72.5'
 4. N89°41'36"E 79.4'

- CANCELLED NOS:
- 1000 702 1101
 - 901 1200M1 1300M1
 - 1300 1501 1801
 - 1500 1800



SEE MAP 2908W21

SEE MAP 2908W20C

SEE MAP 2908W20

SEE M28 M31-11

290820A

Lower Right:
123°39'36"W 43°1'55"N
4076635E 513460N ft