

THIS MAP WAS PREPARED FOR ASSESSMENT PURPOSE ONLY.

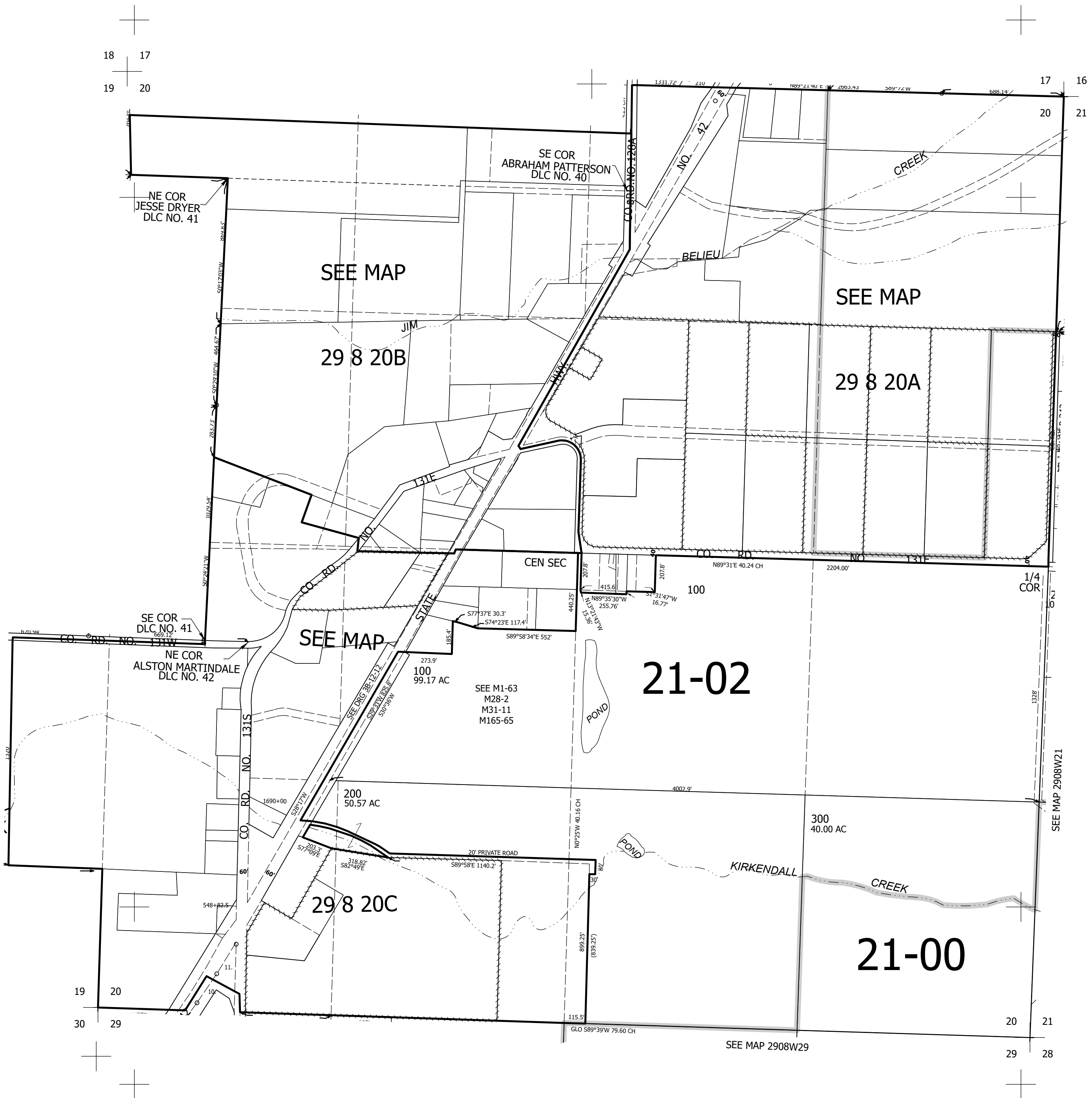
Upper Left:
123°41'16"W 43°2'31"N
4069339E 517424N ft

SEC.20 T.29S. R.08W. W.M.
DOUGLAS COUNTY
1" = 400'

Date Exported 2024-12-16

290820
& INDEX

CANCELLED NOS:
101 102



290820
& INDEX

Lower Right:
123°39'27"W 43°1'25"N
4077189E 510469N ft