

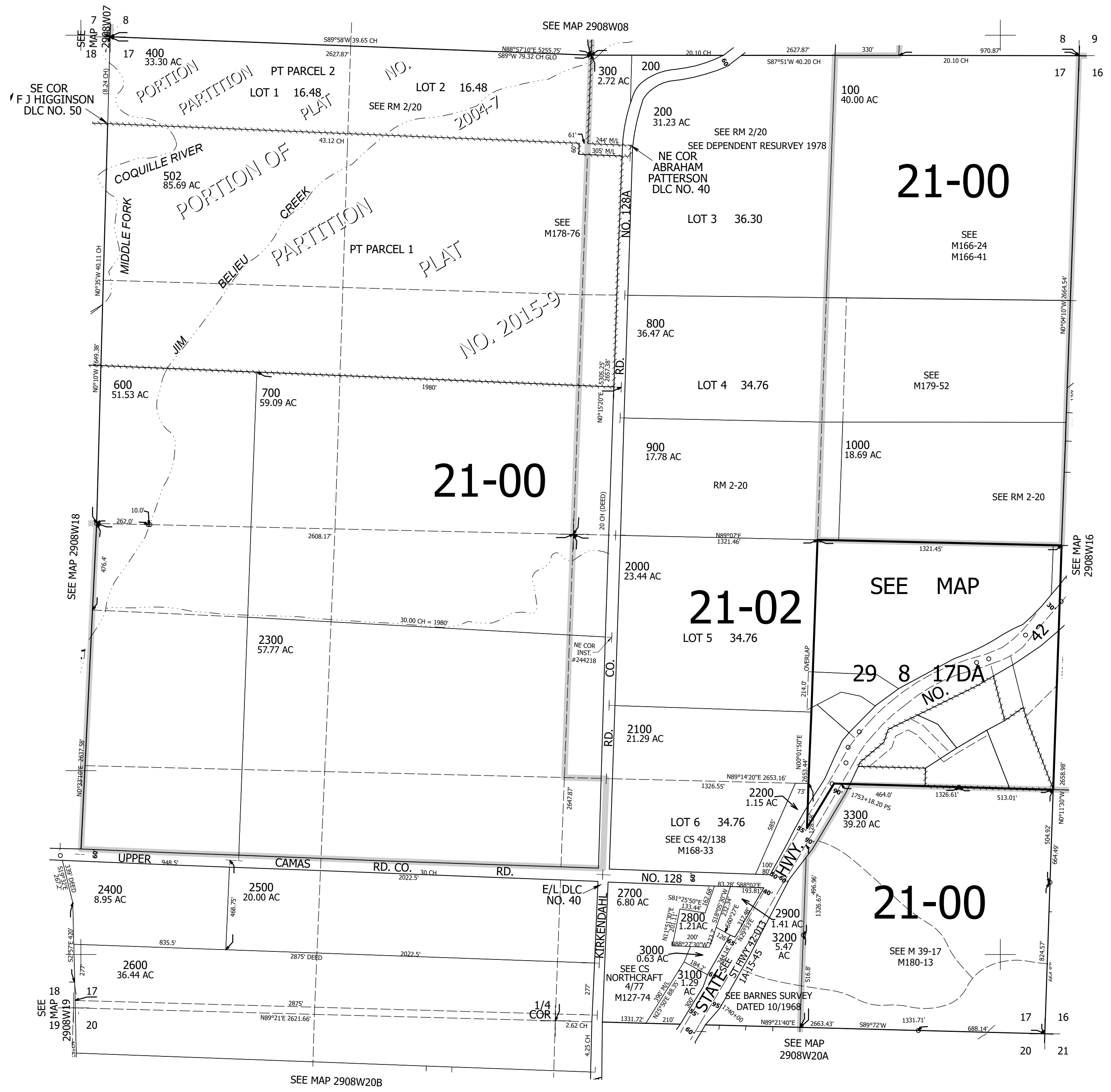
THIS MAP WAS PREPARED FOR ASSESSMENT PURPOSE ONLY.

Upper Left:
123°41'15"W 43°3'23"N
4069619E 522680N ft

SEC.17 T.29S. R.08W. W.M.
DOUGLAS COUNTY
1" = 400'

Date Exported 2024-11-01

CANCELLED NOS:
1201 1699 3001
1799 3199 1999
3302 200M1 1900M1
2300M1 2300M2 501
3301 500 503
504 1100-1900



Lower Right:
123°39'26"W 43°2'17"N
4077469E 515725N ft