

THIS MAP WAS PREPARED FOR ASSESSMENT PURPOSE ONLY.

Upper Left:  
123°40'2"W 43°3'25"N  
4075030E 522714N ft

SEC.16 T.29S. R.08W. W.M.  
DOUGLAS COUNTY  
1" = 400'

Date Exported 2025-02-10

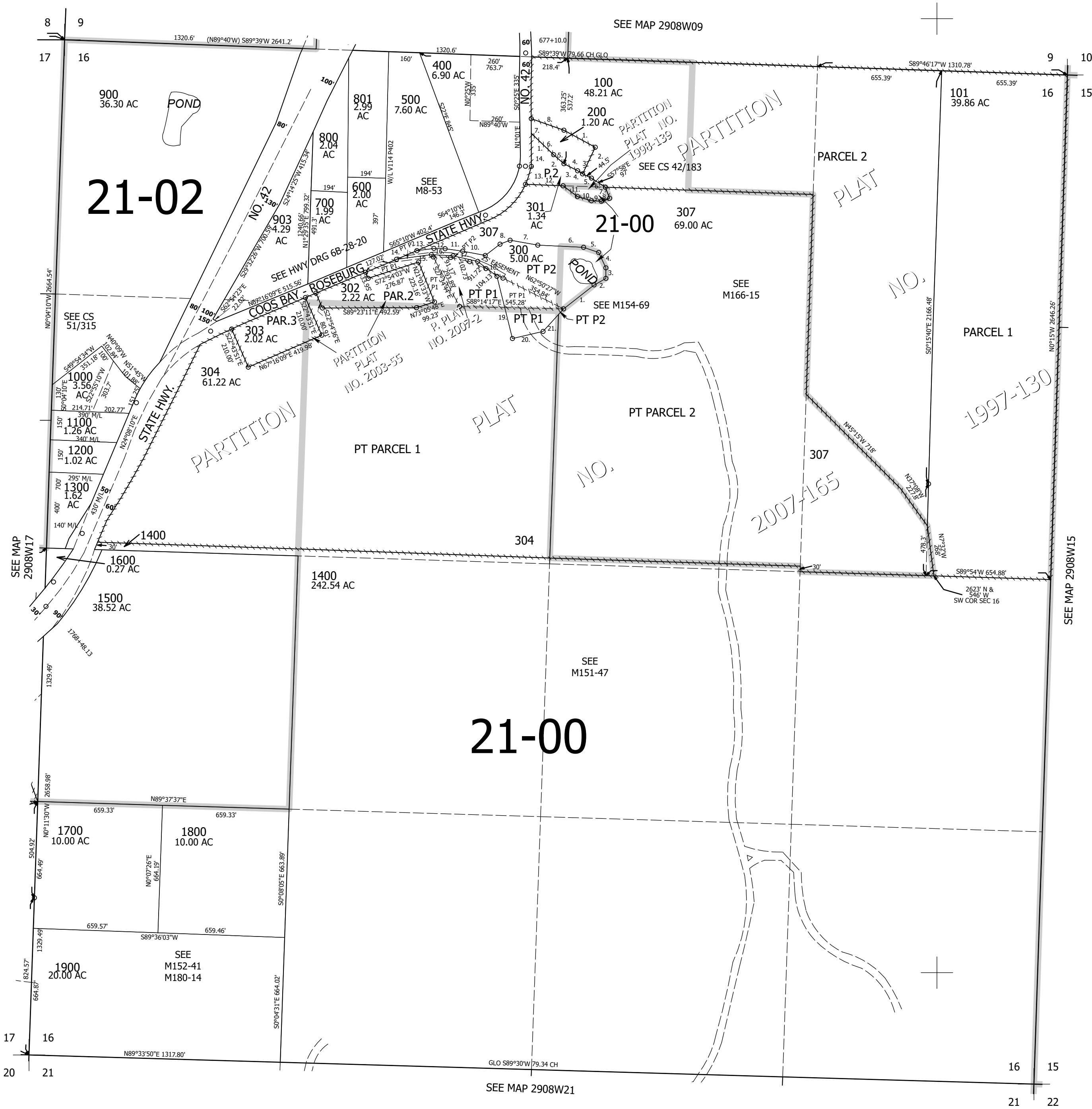
290816

- PARCEL 200
1. S62°30'E 188'
  2. S24°30'W 151'
  3. N60°W 33.8'
  4. N66°30'W 81.3'
  5. S57°41'E 54.7'
  6. S43°59'E 155.7'
  7. N0°30'E 76.4'
  8. S74°30'E 165.4'

- PARCEL 301
1. S43°59'00"E 155.7'
  2. S57°30'00"E 54.64'
  3. S66°31'00"E 81.3'
  4. S62°49'00"E 34.13'
  5. S62°49'00"E 49.67'
  6. S57°58'00"E 97'
  7. S17°28'26"E 52.94'
  8. S66°28'08"W 46.58'
  9. S89°52'43"W 51.7'
  10. N76°50'35"W 76.45'
  11. N56°17'12"W 187.34'
  12. WEST 187.34'
  13. N17°35'00"E 99.3'
  14. N1°01'00"E 168.5'

- PARCEL 300
1. N51°57'50"E 193.61'
  2. N59°28'58"E 79.99'
  3. N0°02'37"W 55.26'
  4. N25°11'25"W 89.11'
  5. N71°11'40"W 83.26'
  6. N87°17'35"W 240.37'
  7. N79°55'23"W 147.14'
  8. S68°45'13"W 56.77'
  9. S52°40'20"W 97.54'
  10. N79°16'24"W 120.7'
  11. N82°00'47"W 92.38'
  12. N88°17'35"W 59.02'
  13. S82°26'58"W 108.85'
  14. S66°45'29"W 114.45'
  15. N82°22'07"E 201.34'
  16. S86°45'55"E 114.32'
  17. S77°15'52"E 131.95'
  18. S52°17'03"E 127.74'
  19. S13°59'23"E 335.92'
  20. N76°56'59"E 164.94'
  21. N42°21'42"E 159.75'

CANCELLED NOS:  
901 902 100M1  
101M1 300M1 300M2  
300M3 600M1 700M1  
800M1 801M1 1400M1  
1400M2 1400M3 1400M4  
1900M1 305 306



290816

Lower Right:  
123°38'13"W 43°2'20"N  
4082880E 515758N ft