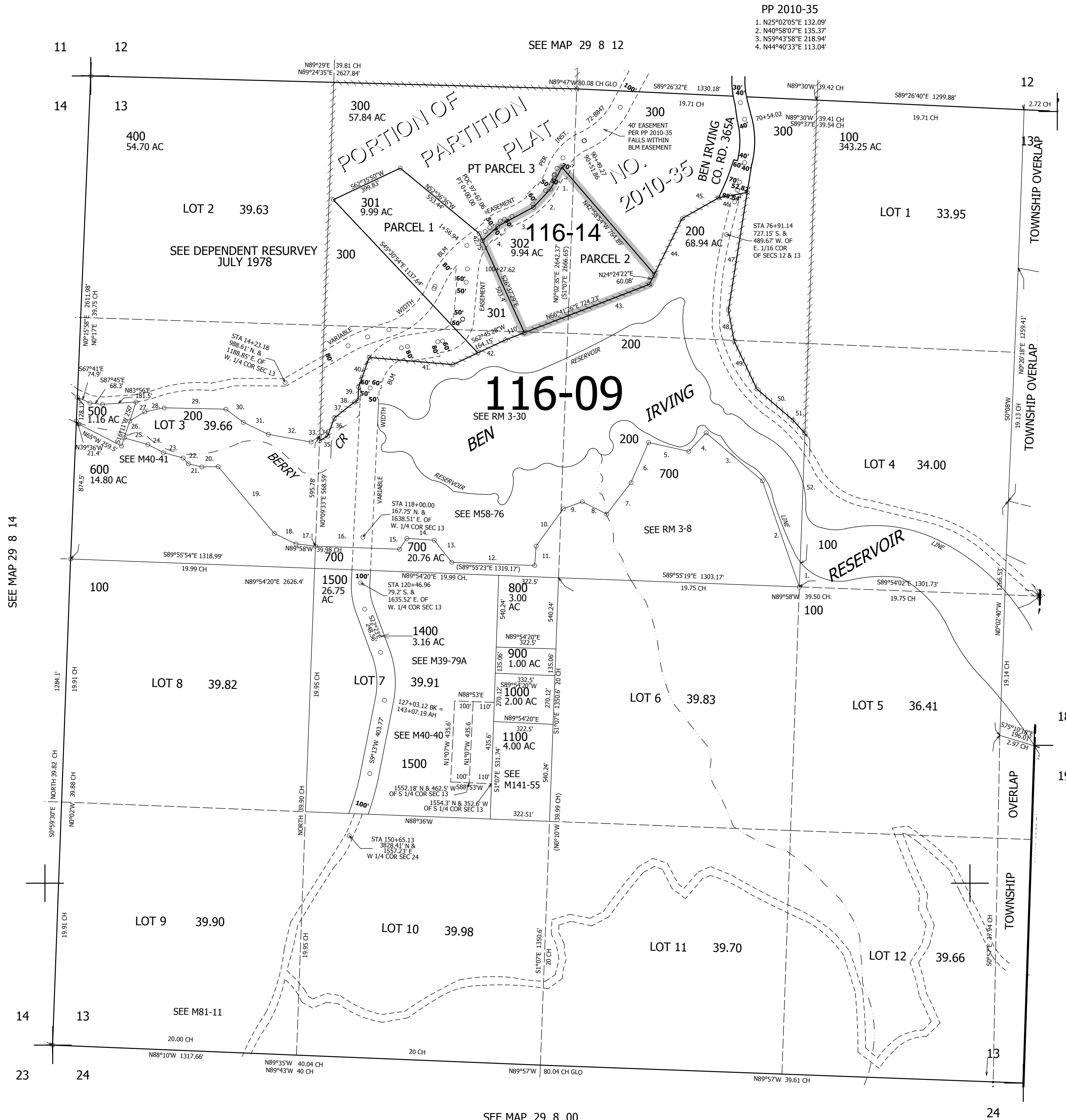


THIS MAP WAS PREPARED FOR ASSESSMENT PURPOSE ONLY.

SEC.13 T.29S. R.8W. W.M. DOUGLAS COUNTY 1" = 400'

REVISED ON 2-9-16

29 8 13



PP 2010-35  
1. N25°02'05"E 132.09'  
2. N40°58'07"E 135.37'  
3. N59°43'58"E 218.94'  
4. N44°40'33"E 113.04'

CANCELLED NO'S  
1300 1200

- PARCEL 200
1. S0°01'23"E 127.81'
  2. N21°23'30"W 606.57'
  3. N51°41'07"W 399.41'
  4. S41°06'48"W 137.26'
  5. N79°38'33"W 222.27'
  6. S21°31'41"W 236.91'
  7. S35°30'08"W 214.64'
  8. N65°12'15"W 148.05'
  9. S67°38'06"W 109.8'
  10. S33°55'44"W 249.86'
  11. S1°47'07"W 104.94'
  12. N89°55'23"W 448.86'
  13. N40°22'46"W 152.23'
  14. N88°16'32"W 149.35'
  15. S31°09'35"W 70.56'
  16. N89°59'19"W 454.84'
  17. N85°32'22"W 106.13'
  18. N66°31'38"W 130.04'
  19. N42°07'52"W 471.5'
  20. S86°46'W 88.36'
  21. N79°06'47"W 73.95'
  22. N44°22'19"W 43.23'
  23. N76°57'44"W 110.41'
  24. N64°32'42"W 94.59'
  25. N76°31'41"W 135.02'
  26. N15°58'31"E 93.42'
  27. N56°46'41"E 98.6'
  28. N76°02'34"E 107.19'
  29. N89°06'09"E 333.44'
  30. S55°07'15"E 117.9'
  31. S66°20'57"E 149.79'
  32. S81°57'E 234.69'
  33. N53°19'12"E 57.96'
  34. S1°37'55"W 26.72'
  35. N57°28'08"E 51.53'
  36. N17°59'11"E 103.53'
  37. N49°27'23"E 139.37'
  38. N62°29'08"E 20.78'
  39. N0°42'E 71.04'
  40. N17°17'27"E 170.58'
  41. S87°14'12"E 454.19'
  42. N62°47'26"E 313.63'
  43. N66°44'02"E 834.28'
  44. N24°23'07"E 396.72'
  45. N58°15'55"E 226.63'
  46. N77°13'13"E 156.73'
  47. S6°53'39"W 645.03'
  48. S12°37'53"E 169.87'
  49. S27°36'19"E 285.85'
  50. S51°22'11"E 257.42'
  51. S44°16'23"E 95.91'
  52. S0°01'23"E 702.55'

SEE MAP 29 8 14

SEE MAP 29 7 18

SEE MAP 29 7 00

SEE MAP 29 8 00

517,000

4,079,000

29 8 13