

THIS MAP WAS PREPARED FOR
ASSESSMENT PURPOSE ONLY.

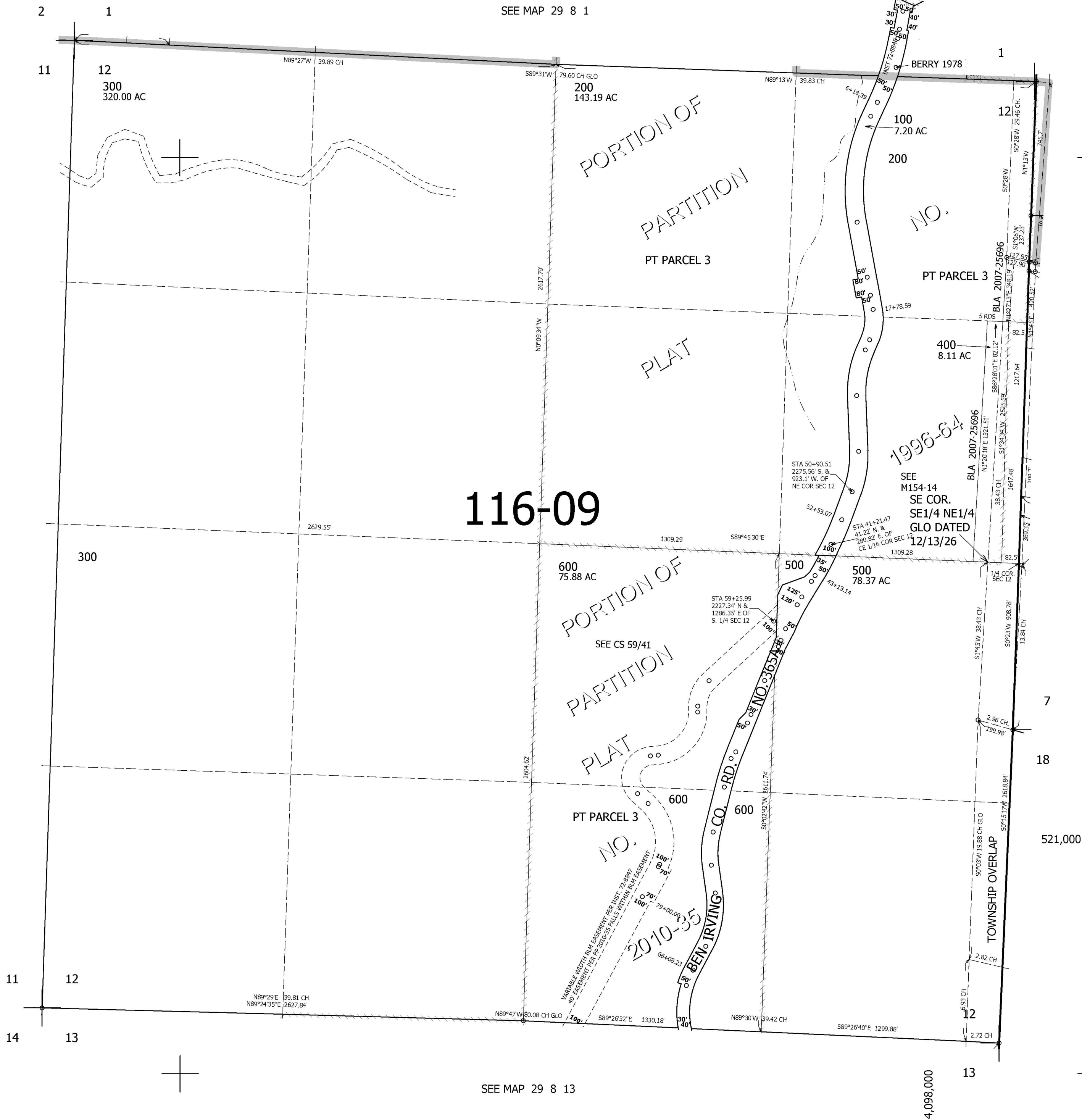
SEC.12 T.29S. R.8W. W.M.
DOUGLAS COUNTY
1" = 400'

REVISED ON
10-29-10

29 8 12

CANCELLED NO'S
201

SEE MAP 29 8 1



SEE MAP 29 8 11

SEE MAP 29 7 7

SEE MAP 29 7 18

SEE MAP 29 8 13

4,098,000

29 8 12