

THIS MAP WAS PREPARED FOR ASSESSMENT PURPOSE ONLY.

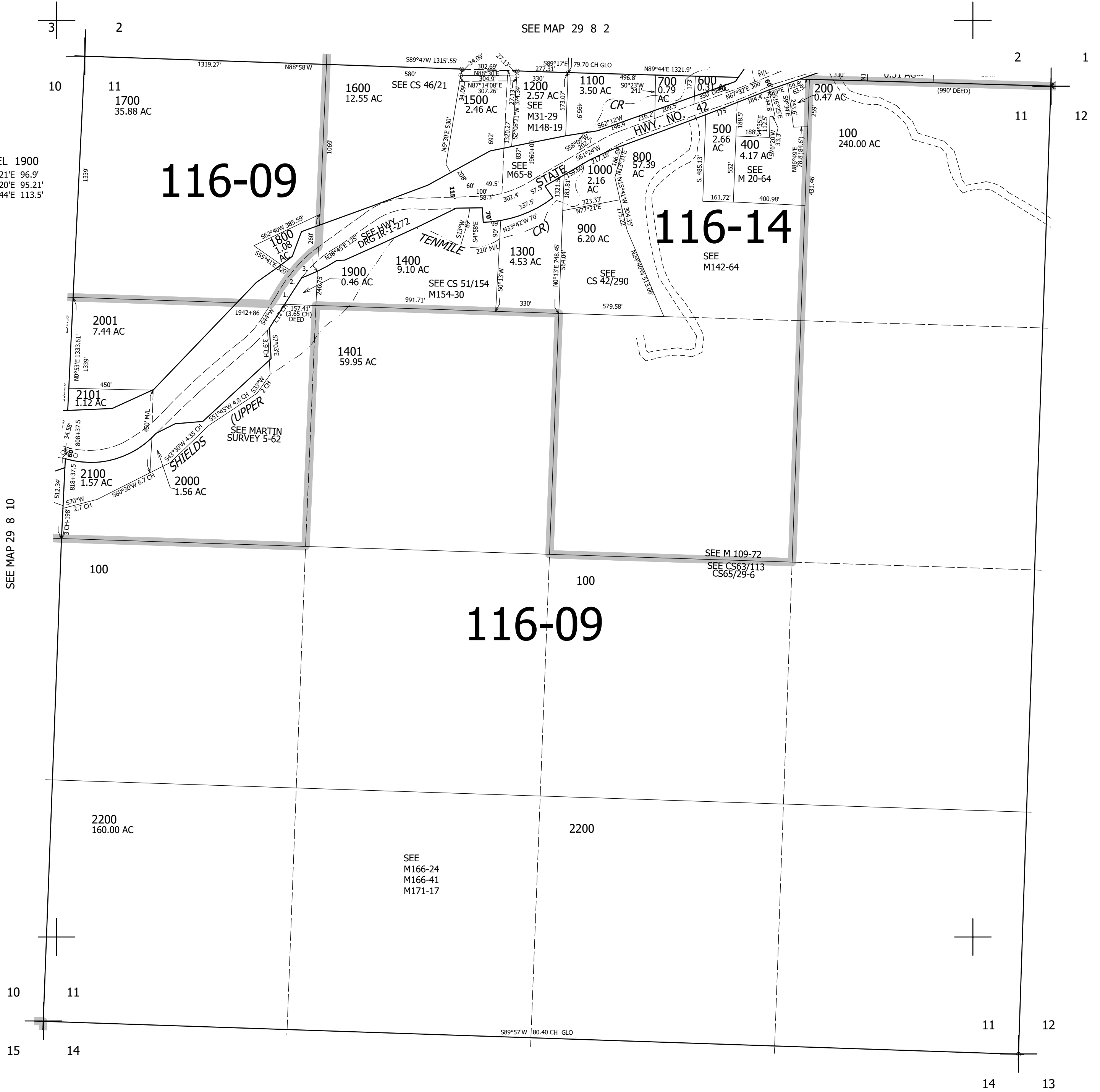
SEC.11 T.29S. R.8W. W.M.
DOUGLAS COUNTY
1" = 400'

REVISED ON
3-4-13

29 8 11

PARCEL 1900
1. N25°21'E 96.9'
2. N32°20'E 95.21'
3. N39°44'E 113.5'

CANCELLED NO'S
300 1601 1401M1
1400M1 800M1 1201
1501 1202 1203



SEE MAP 29 8 10

SEE MAP 29 8 12

116-09

116-14

522,000

SEE MAP 29 8 14

4,092,000

29 8 11