

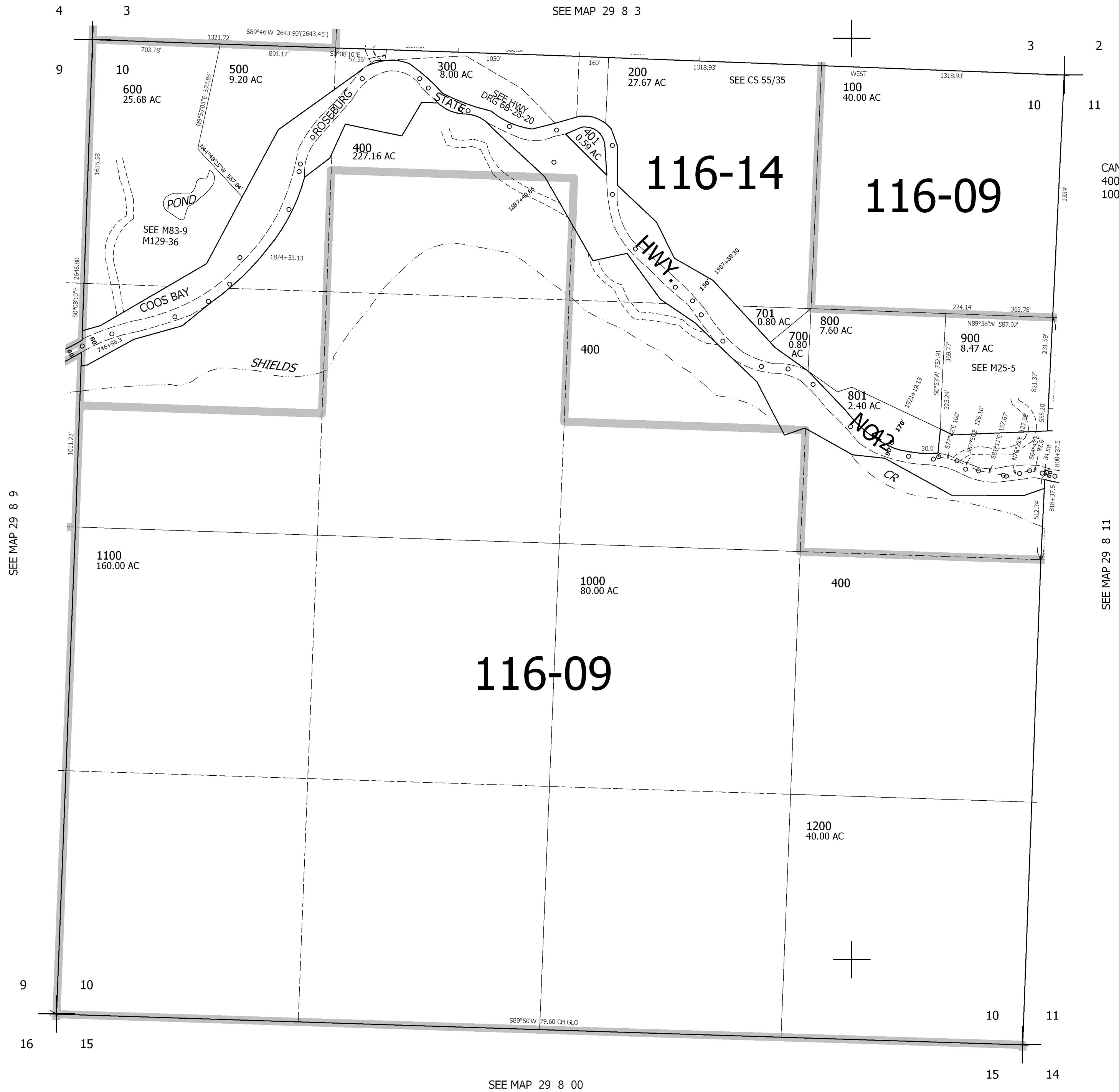
THIS MAP WAS PREPARED FOR ASSESSMENT PURPOSE ONLY.

SEC.10 T.29S. R.8W. W.M.
DOUGLAS COUNTY

1" = 400'

REVISED ON
7-25-95

29 8 10



SEE MAP 29 8 3

SEE MAP 29 8 9

SEE MAP 29 8 11

116-09

116-14

116-09

SEE MAP 29 8 00

4,086,000

CANCELLED NO'S
400M1 400M2 401M2
1000M1

522,000

29 8 10