

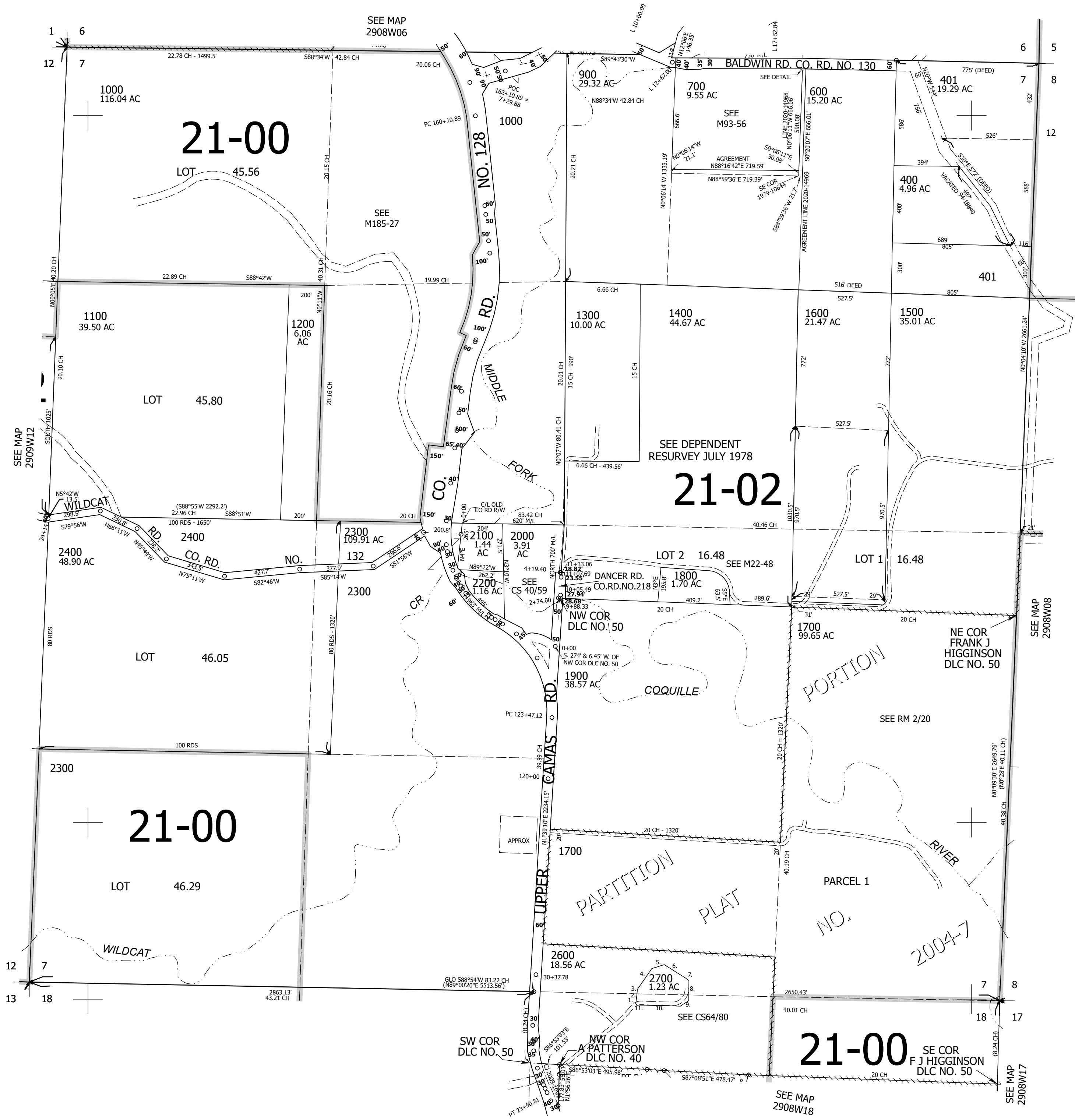
THIS MAP WAS PREPARED FOR ASSESSMENT PURPOSE ONLY.

Upper Left:  
123°42'24"W 43°4'14"N  
4064682E 527997N ft

SEC.07 T.29S. R.08W. W.M.  
DOUGLAS COUNTY  
1" = 400'

- PARCEL 2700  
P.O.B. S84°43'17"W 575.86'  
FR S 1/4 COR SEC 7  
1. N39°03'08"W 5.98'  
2. N2°31'15"E 12.63'  
3. N4°58'58"E 68.37'  
4. N33°37'22"E 142.78'  
5. N70°45'19"E 73.59'  
6. S59°21'24"E 141.16'  
7. S53°16'18"E 25.74'  
8. S0°54'48"E 112.7'  
9. S55°11'07"W 56.61'  
10. N89°59'38"W 244.94'  
11. N44°26'12"W 5.32'

- CANCELLED NOS:  
701 1501 100  
1502 200 1701  
300 500 1100M1  
2400M1 2500 800  
702 2300A1



DETAIL

Lower Right:  
123°40'35"W 43°3'8"N  
4072531E 521041N ft