

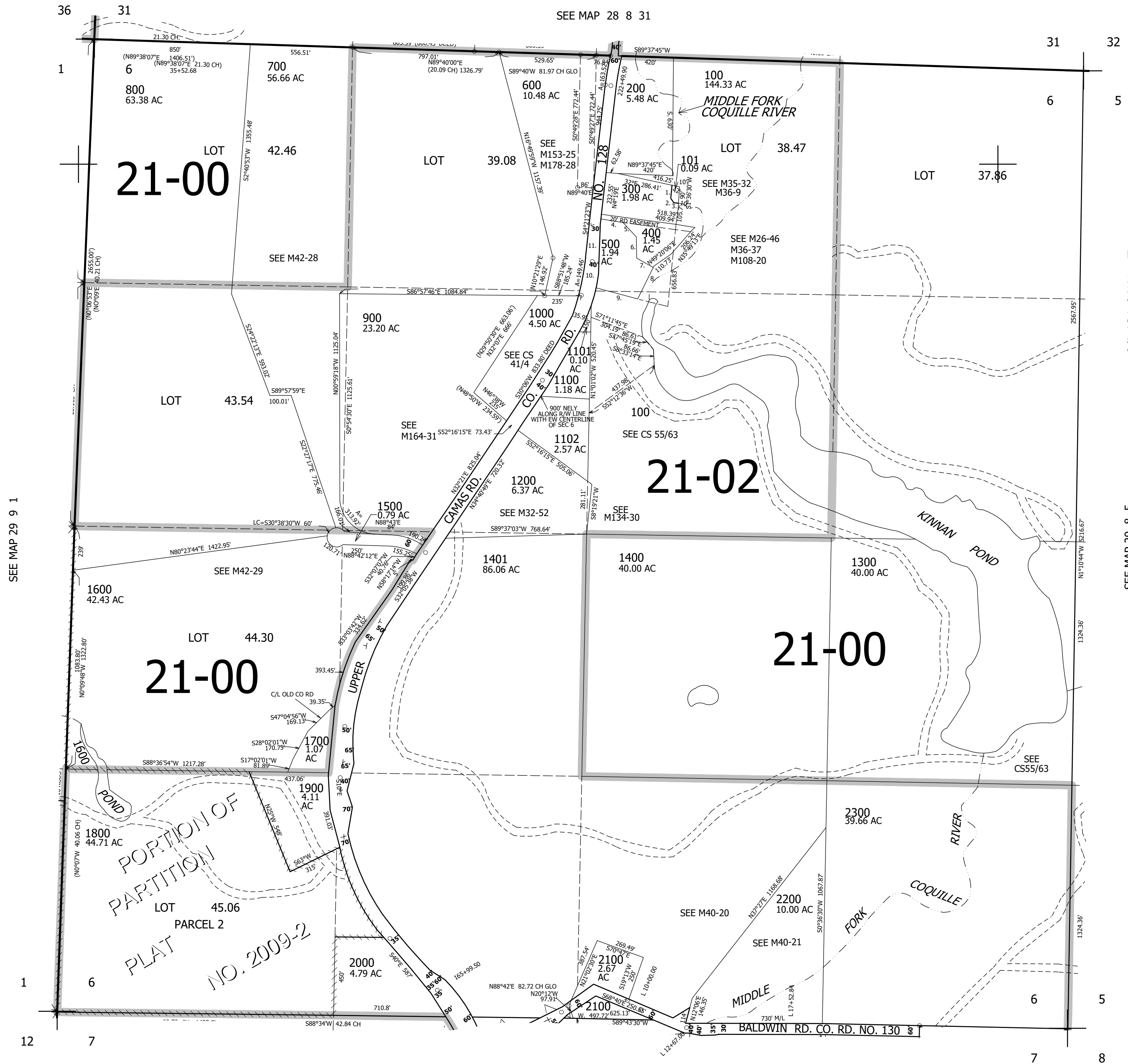
THIS MAP WAS PREPARED FOR ASSESSMENT PURPOSE ONLY.

SEC.6 T.29S. R.8W. W.M. DOUGLAS COUNTY

REVISED ON 5-6-21

29 8 6

1" = 400'



CANCELLED NO'S 1200A2 1402 1200A1 701 2000A1 702

PARCEL 300 & 500

- 1. N2°36'E 71.94'
- 2. N37°36'W 29'
- 3. N87°42'W 24.65'
- 4. N87°08'37"W 121.94'
- 5. N41°08'16"W 126.44'
- 6. N4°50'17"W 97.13'
- 7. N64°26'W 108.95'
- 8. N20°24'25"E 189.77'
- 9. S79°18'E 230'
- 10. S2°59'49"W 84.49'
- 11. S4°34'40"E 296.83'

SEE MAP 29 9 1

SEE MAP 29 8 5

SEE MAP 29 8 7

527,000

29 8 6

4,071,000