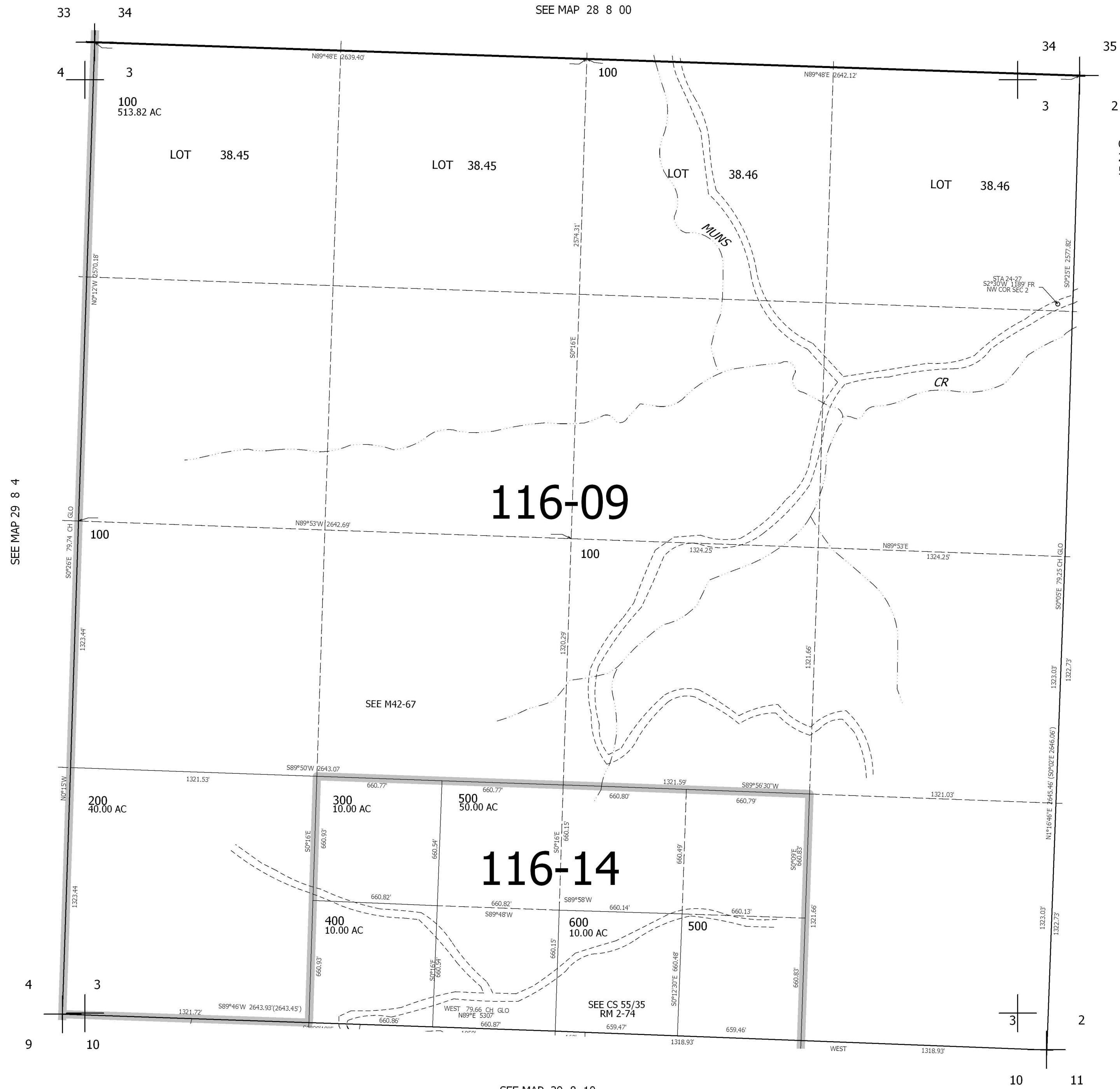


THIS MAP WAS PREPARED FOR ASSESSMENT PURPOSE ONLY.

SEC.3 T.29S. R.8W. W.M.  
DOUGLAS COUNTY  
1" = 400'

REVISED ON

29 8 3



CANCELLED NO'S  
200M1 300M1 400M1  
500M1

SEE MAP 29 8 4

SEE MAP 29 8 2

SEE M42-67

SEE CS 55/35  
RM 2-74

527,000

SEE MAP 29 8 10

4,087,000

29 8 3