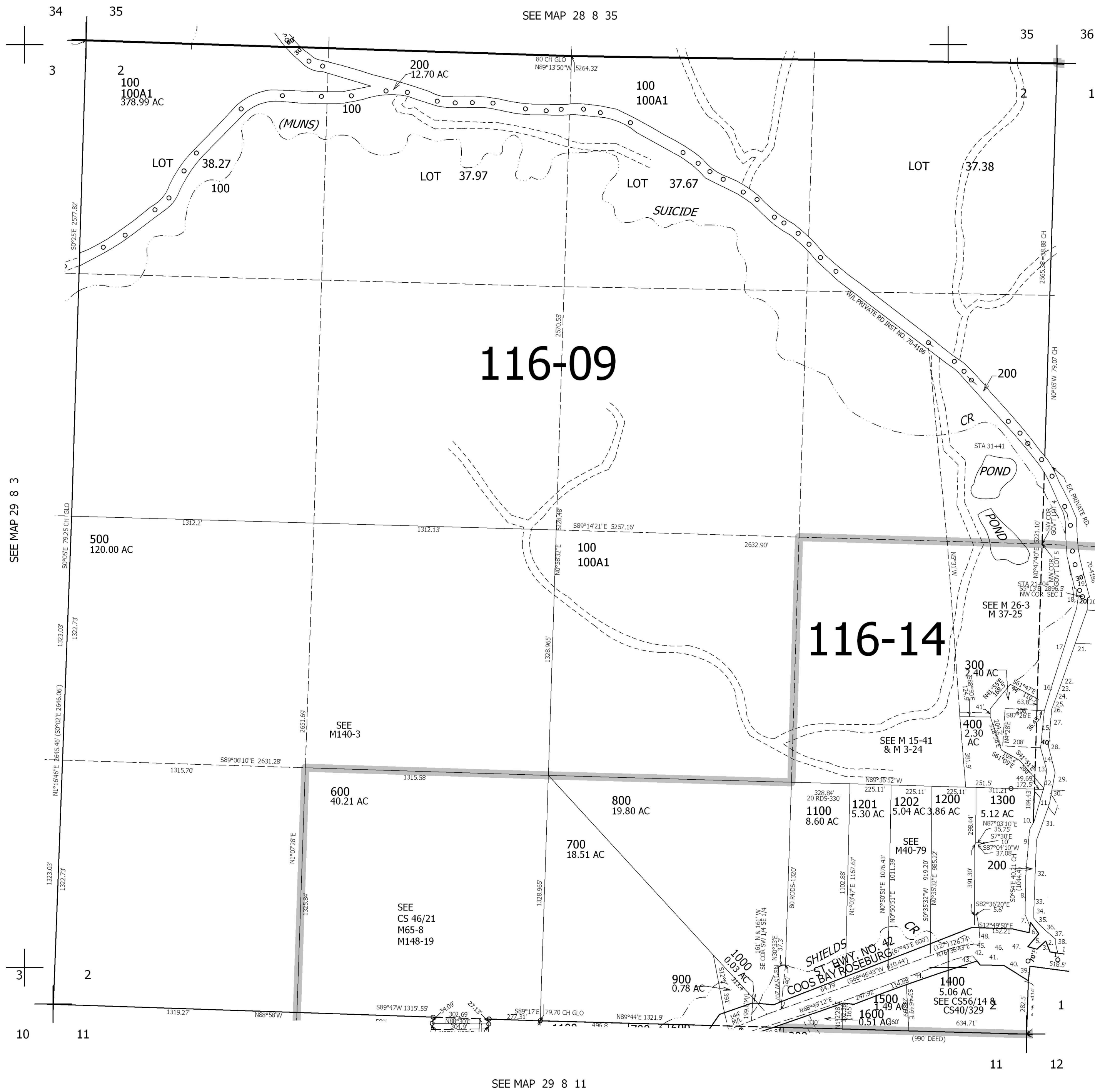


THIS MAP WAS PREPARED FOR ASSESSMENT PURPOSE ONLY.

SEC.2 T.29S. R.8W. W.M. DOUGLAS COUNTY

1" = 400'

REVISED ON 7-17-06



CANCELLED NO'S

1. N82°16'20"W 35.7'
2. N28°26'W 74.58'
3. S40°56'W 71.95'
4. N82°16'20"W 44.5'
5. N40°56'57"E 100.09'
6. N46°41'06"W 54.21'
7. N25°20'15"W 75.46'
8. N1°40'13"W 212.41'
9. N3°06'56"E 239.79'
10. N20°40'32"E 40.56'
11. N15°01'39"E 189.83'
12. N5°21'34"E 32.77'
13. N14°10'19"E 61.64'
14. N15°56'19"W 137.6'
15. N3°57'35"E 207.81'
16. N17°22'16"E 152.06'
17. N17°04'16"E 420.71'
18. N2°43'35"E 104.41'
19. N85°54'06"E 40.25'
20. S2°49'05"W 114.5'
21. S16°59'04"W 425.59'
22. S17°15'05"W 58.89'
23. N72°44'55"W 1.6'
24. S17°15'05"W 70'
25. S72°44'55"E 1.6'
26. S17°15'05"E 19.75'
27. S3°59'36"W 195.27'
28. S16°24'28"E 137.9'
29. S10°23'15"W 94.28'
30. S9°42'43"W 86.08'
31. S18°08'06"W 204.79'
32. S0°12'41"W 388.04'
33. S10°16'01"E 33.33'
34. S36°54'41"E 38.87'
35. S52°26'40"E 58.67'
36. S48°31'34"E 40.39'
37. S25°32'24"E 39.92'
38. S13°33'38"E 49.84'
39. SOUTH 121.24'
40. S56°49'E 158.3'
41. N88°21'E 136'
42. S37°10'E 72.6' (57.5')
43. N76°36'41"E 127.25'
44. N68°47'13"E 115.42'
45. S86°18'E 105.85'
46. N87°26'E 100'
47. N84°49'W 97.1'
48. S83°26'W 38.85'

SEE MAP 29 8 3

SEE MAP 29 8 1

SEE MAP 29 8 11

4,092,000