

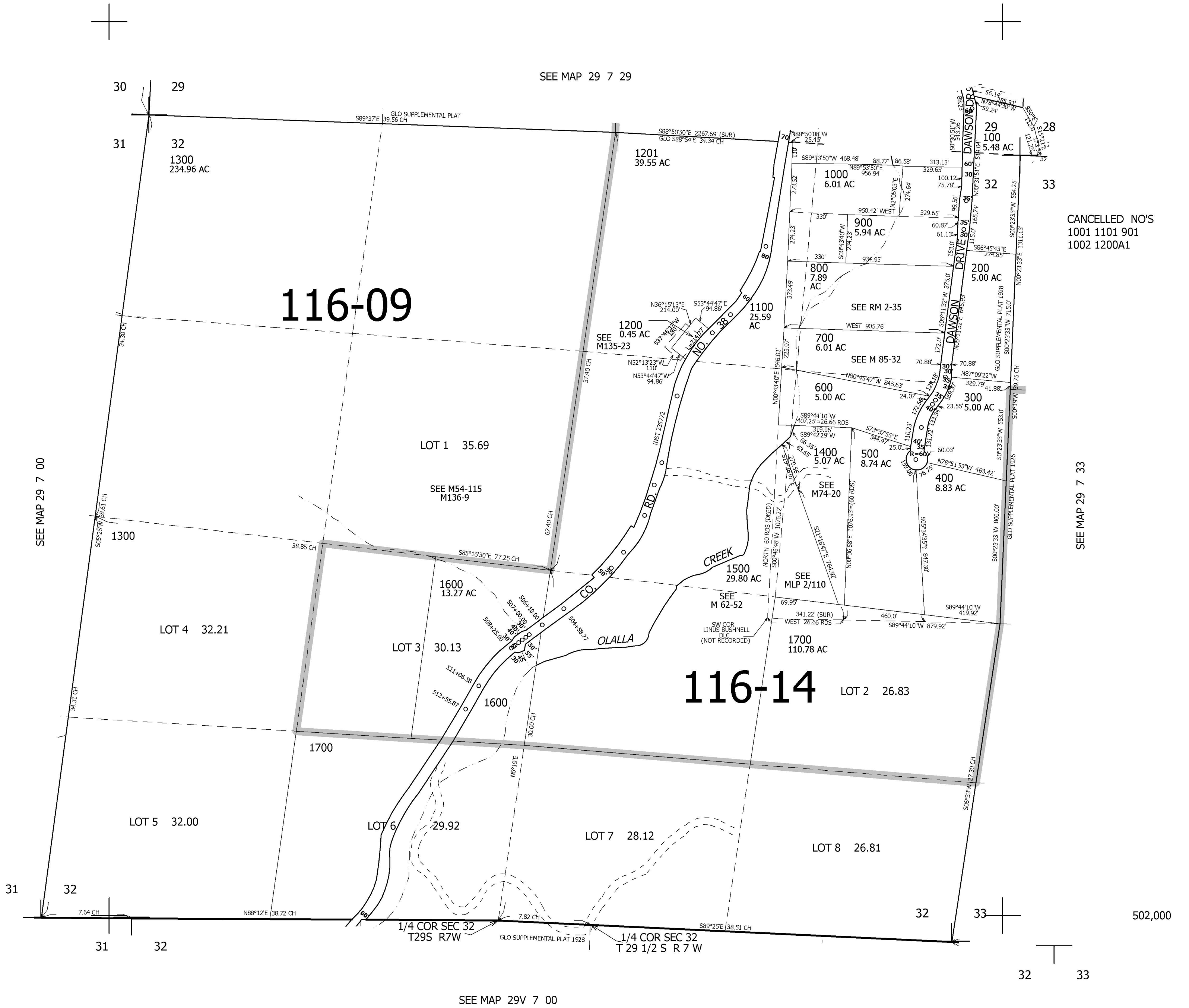
THIS MAP WAS PREPARED FOR ASSESSMENT PURPOSE ONLY.

SEC.32 T.29S. R.7W. W.M.  
DOUGLAS COUNTY

REVISED ON  
2-24-05

29 7 32

1" = 400'



CANCELLED NO'S  
1001 1101 901  
1002 1200A1

SEE MAP 29 7 33

502,000

SEE MAP 29V 7 00

4,107,000

29 7 32