

THIS MAP WAS PREPARED FOR ASSESSMENT PURPOSE ONLY.

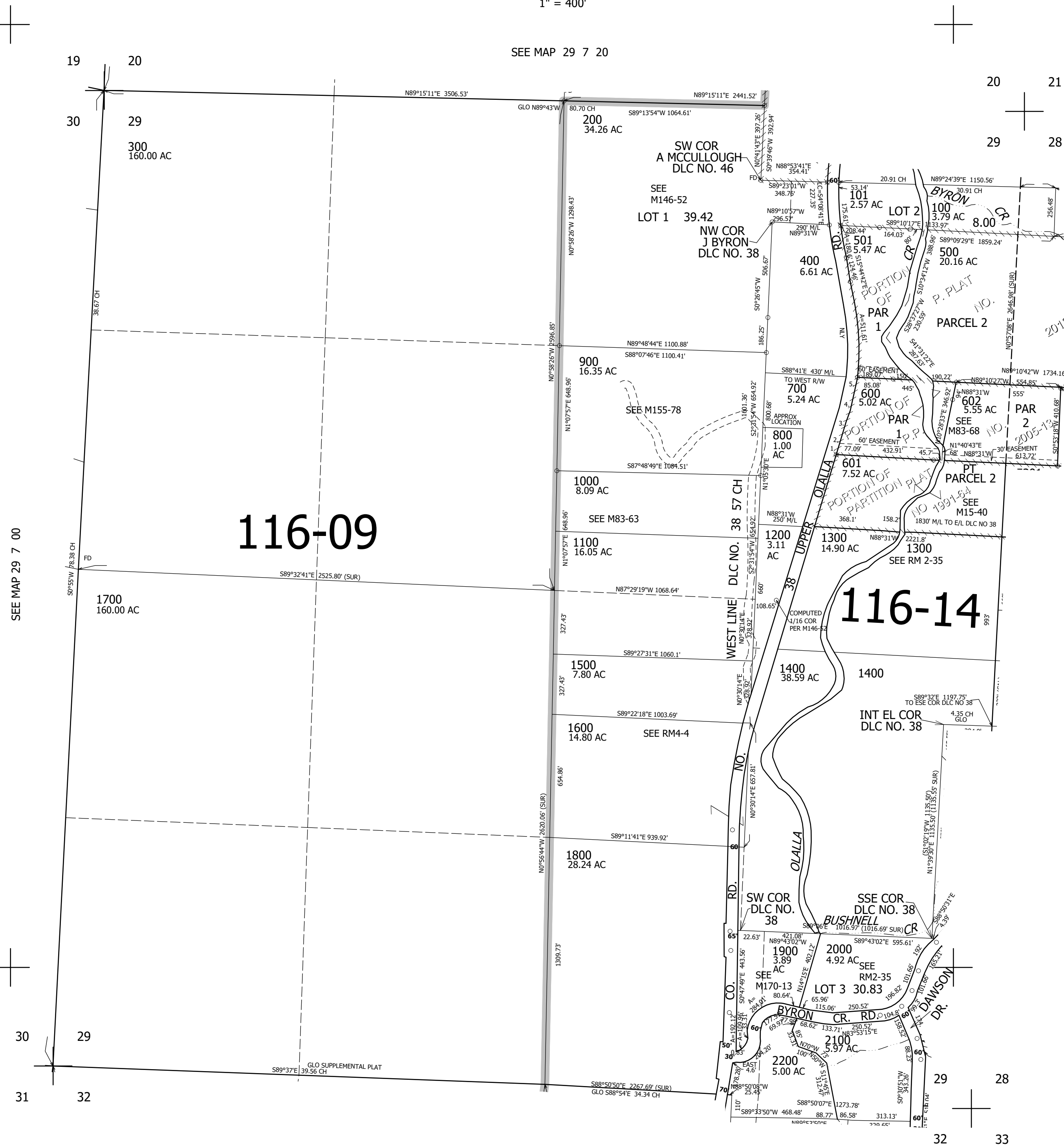
SEC.29 T.29S. R.7W. W.M. DOUGLAS COUNTY

1" = 400'

REVISED ON 10-1-20

29 7 29

SEE MAP 29 7 20



CANCELLED NO'S 1700M1 1401

TAXLOT 500
1. N1°14'38"E 132.87'
2. WEST 55.4'

TAXLOT 600
1. N16°04'58"E 15.72'
2. N15°28'35"E 99.2'
3. N14°13'58"E 106.36'
4. N11°36'01"E 102.32'
5. N7°54'56"E 95.35'

SEE MAP 29 7 28

507,000

SEE MAP 29 7 32

4,107,000

29 7 29