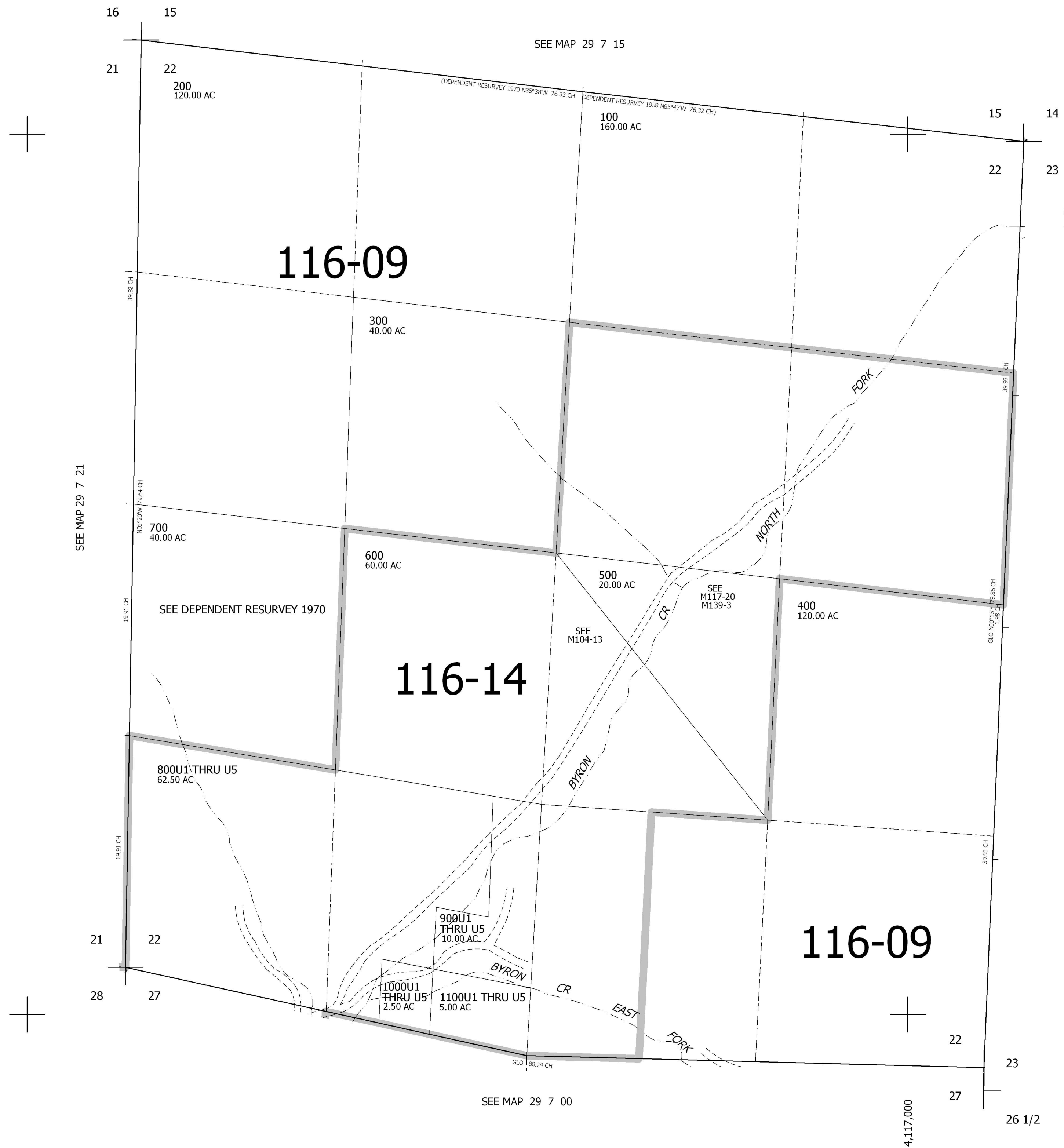


THIS MAP WAS PREPARED FOR ASSESSMENT PURPOSE ONLY.

SEC.22 T.29S. R.7W. W.M.  
DOUGLAS COUNTY  
1" = 400'

REVISED ON

29 7 22



CANCELLED NO'S  
200M1

SEE MAP 29 7 00

511,000

SEE MAP 29 7 00

4,117,000

26 1/2

29 7 22