

THIS MAP WAS PREPARED FOR ASSESSMENT PURPOSE ONLY.

Upper Left:
123°34'4"W 43°2'43"N
4101399E 517474N ft

SEC.20 T.29S. R.07W. W.M.
DOUGLAS COUNTY
1" = 400'

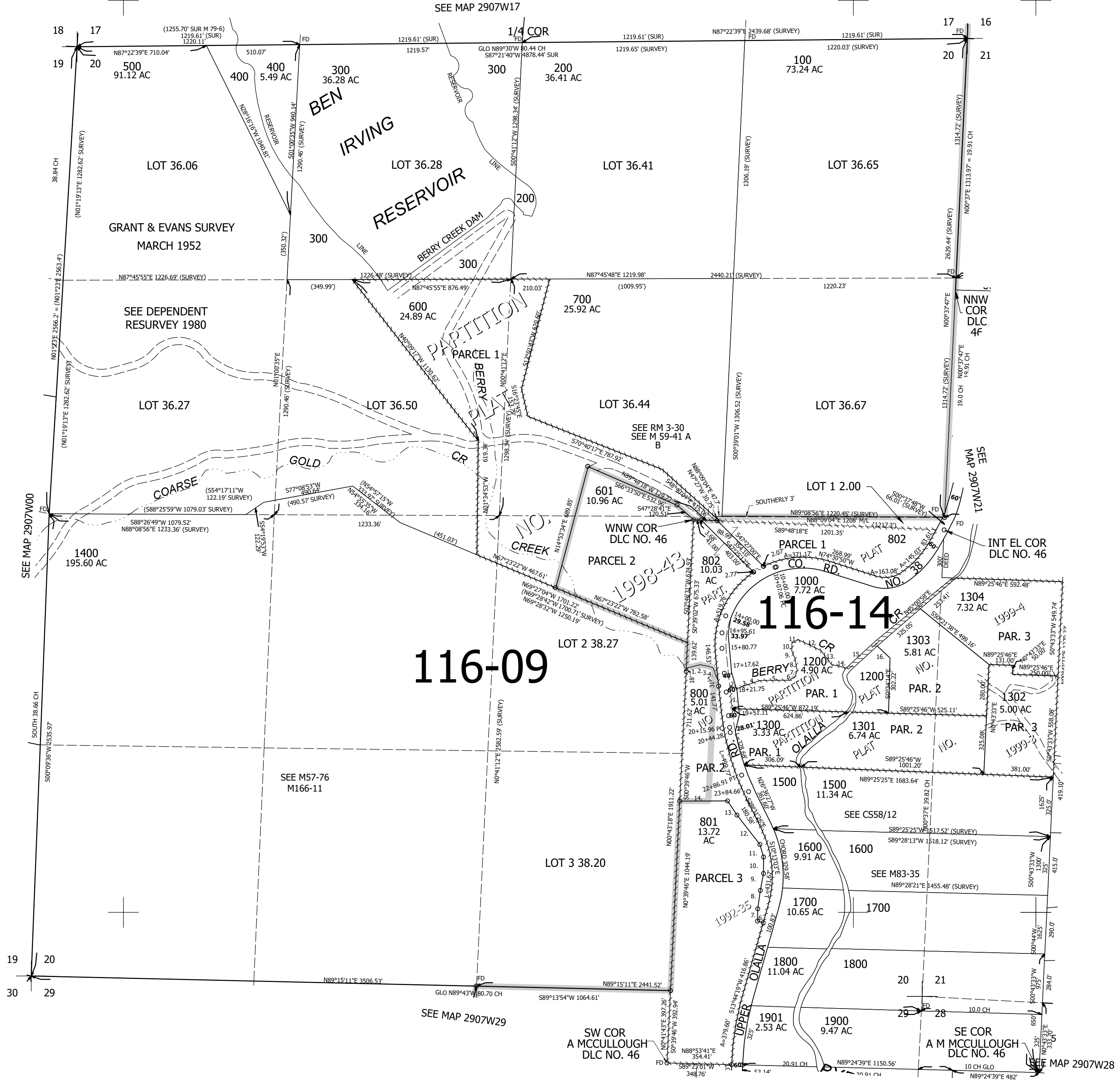
Date Exported 2025-03-31

290720

CANCELLED NOS:
900 1100 1201
701 101

- PARCEL 1200
1. N7°56'27"W 128.78'
 2. S84°04'03"E 75.68'
 3. N67°55'44"E 60.72'
 4. N69°49'12"E 53.33'
 5. N87°38'30"E 159.26'
 6. N57°01'36"E 31.9'
 7. N19°27'23"E 40.38'
 8. N12°28'58"W 67.85'
 9. N25°01'34"W 45.14'
 10. N0°30'47"W 42.26'
 11. N60°26'43"E 39.19'
 12. S66°52'07"E 137.2'
 13. S39°14'35"E 96.88'
 14. S79°19'05"E 97.85'
 15. N45°21'51"E 196.35'
 16. S49°03'53"E 109.4'

- PP 1992-35
1. N73°44'25"E 78.26'
 2. S81°01'51"E 47.75'
 3. S73°27'07"E 25.05'
 4. S22°18'53"E 46.36'
 5. S26°54'54"E 28.13'
 6. S76°15'41"E 32.71'
 7. S0°48'14"E 67.36'
 8. S5°59'55"W 101.98'
 9. S8°22'43"W 94.37'
 10. S1°56'42"E 90.13'
 11. S18°27'43"E 72.18'
 12. S40°09'37"E 204.01'
 13. S35°48'50"E 93.24'
 14. N87°39"E 261.4'



290720

Lower Right:
123°32'15"W 43°1'37"N
4109248E 510518N ft