

THIS MAP WAS PREPARED FOR ASSESSMENT PURPOSE ONLY.

SEC.18 T.29S. R.7W. W.M.  
DOUGLAS COUNTY

REVISED ON

29 7 18

1" = 400'

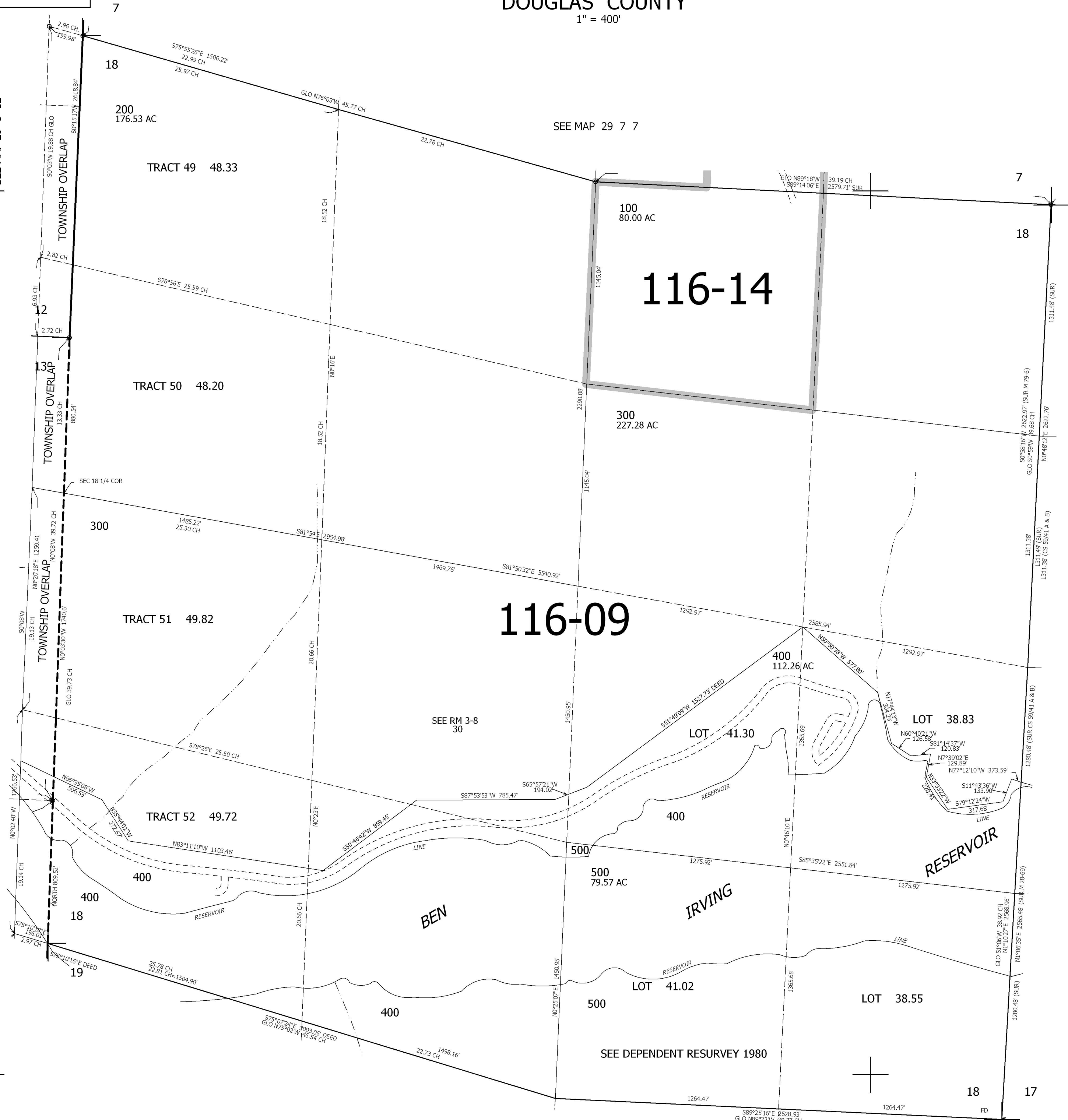
SEE MAP 29 8 12

SEE MAP 29 8 13

SEE MAP 29 7 7

CANCELLED NO'S  
200M1

SEE MAP 29 7 17



116-09

116-14

SEE MAP 29 7 00

4,102,000

517,000

29 7 18