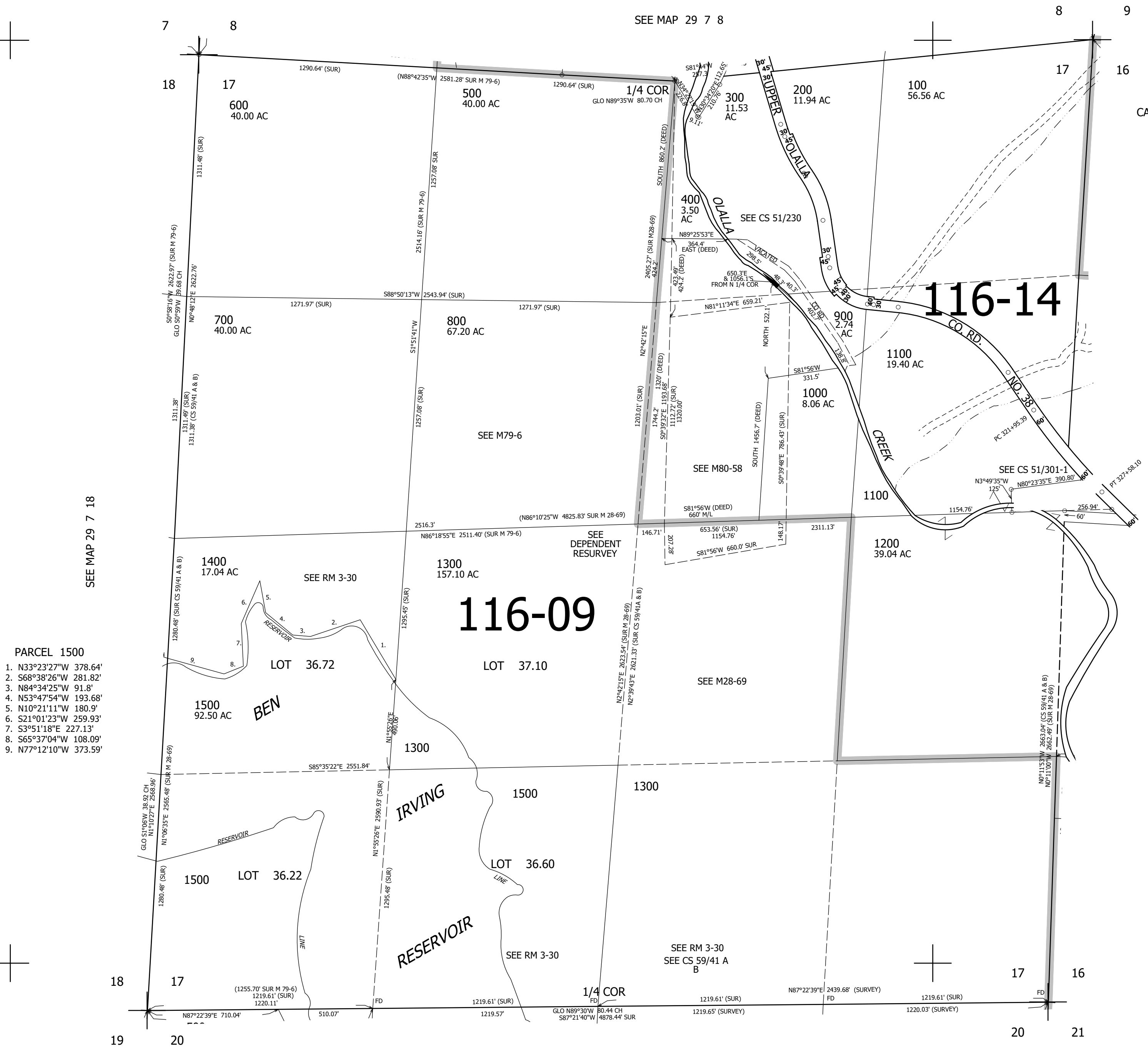
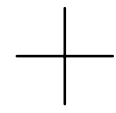
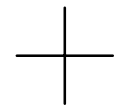


THIS MAP WAS PREPARED FOR ASSESSMENT PURPOSE ONLY.

SEC.17 T.29S. R.7W. W.M. DOUGLAS COUNTY 1" = 400'

REVISED ON 7-21-22

29 7 17



- PARCEL 1500
1. N33°23'27"W 378.64'
 2. S68°38'26"W 281.82'
 3. N84°34'25"W 91.8'
 4. N53°47'54"W 193.68'
 5. N10°21'11"W 180.9'
 6. S21°01'23"W 259.93'
 7. S3°51'18"E 227.13'
 8. S65°37'04"W 108.09'
 9. N77°12'10"W 373.59'

SEE MAP 29 7 18

SEE MAP 29 7 8

SEE MAP 29 7 16

SEE MAP 29 7 20

4,107,000

517,000

29 7 17