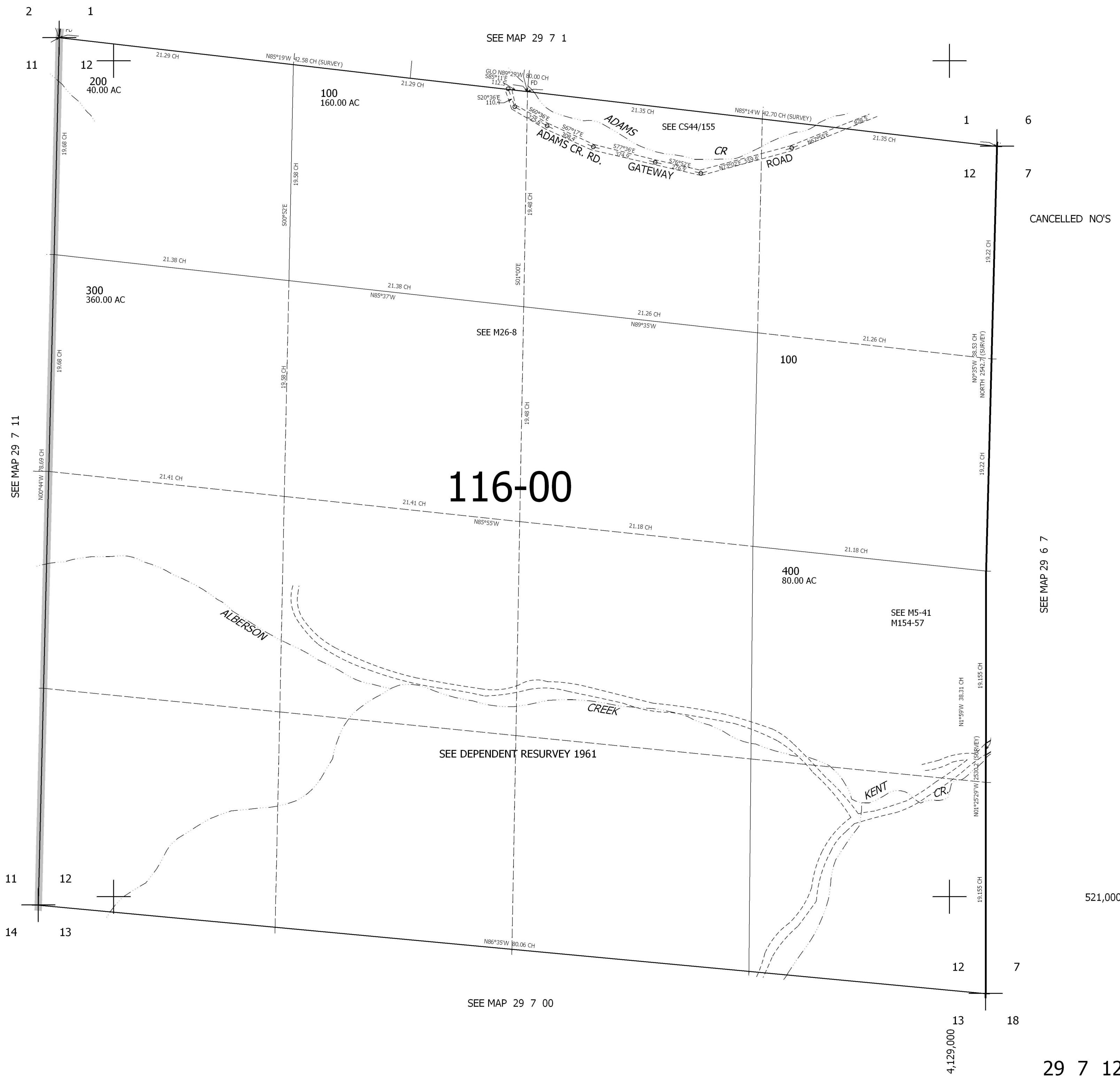


THIS MAP WAS PREPARED FOR ASSESSMENT PURPOSE ONLY.

SEC.12 T.29S. R.7W. W.M.
DOUGLAS COUNTY
1" = 400'

REVISED ON

29 7 12



CANCELLED NO'S

SEE MAP 29 6 7

521,000

SEE MAP 29 7 00

4,129,000

29 7 12