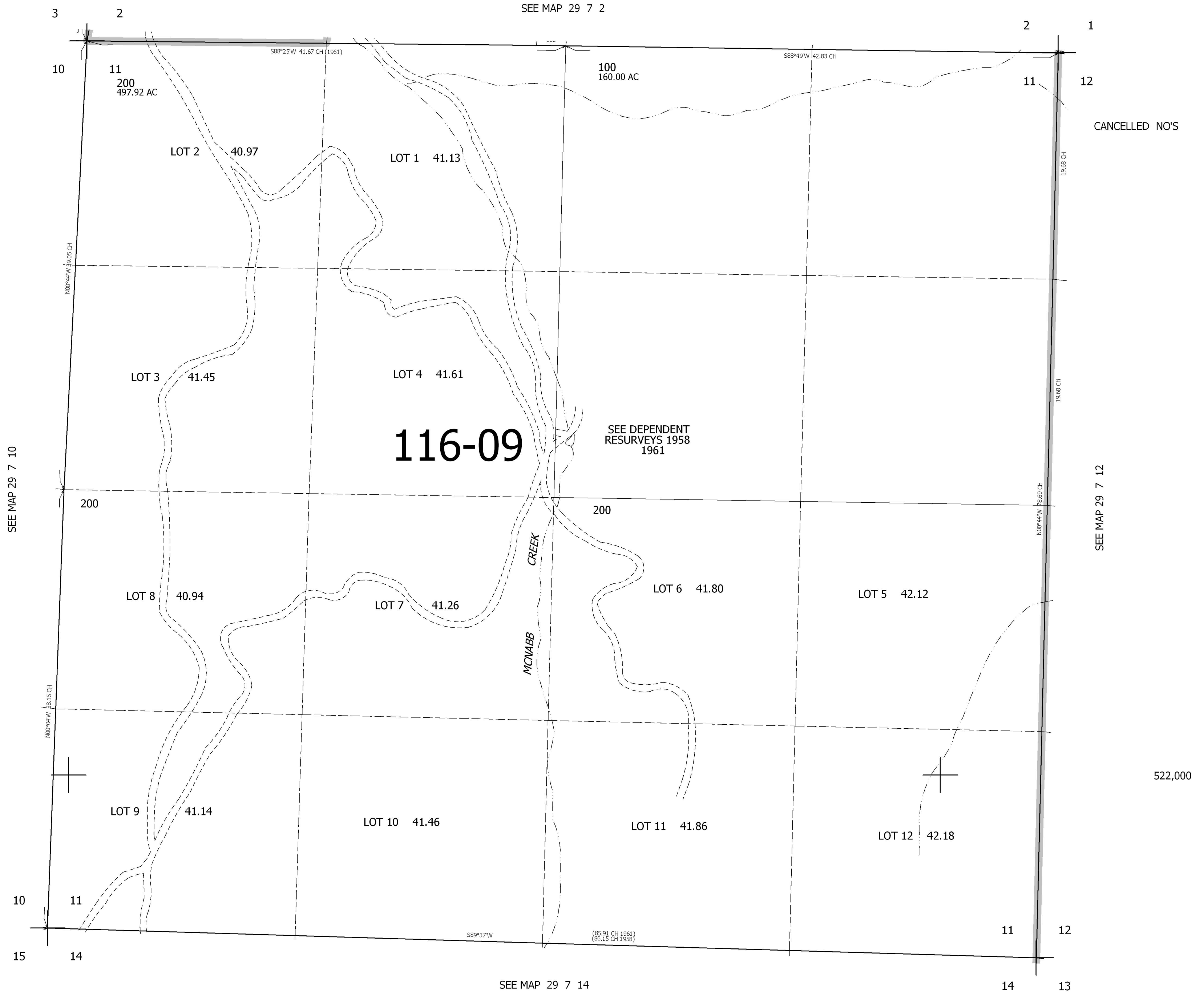


THIS MAP WAS PREPARED FOR
ASSESSMENT PURPOSE ONLY.

SEC.11 T.29S. R.7W. W.M.
DOUGLAS COUNTY
1" = 400'

REVISED ON

29 7 11



CANCELLED NO'S

SEE MAP 29 7 12

522,000

SEE MAP 29 7 14

SEE MAP 29 7 10

SEE MAP 29 7 2

4,123,000

29 7 11