

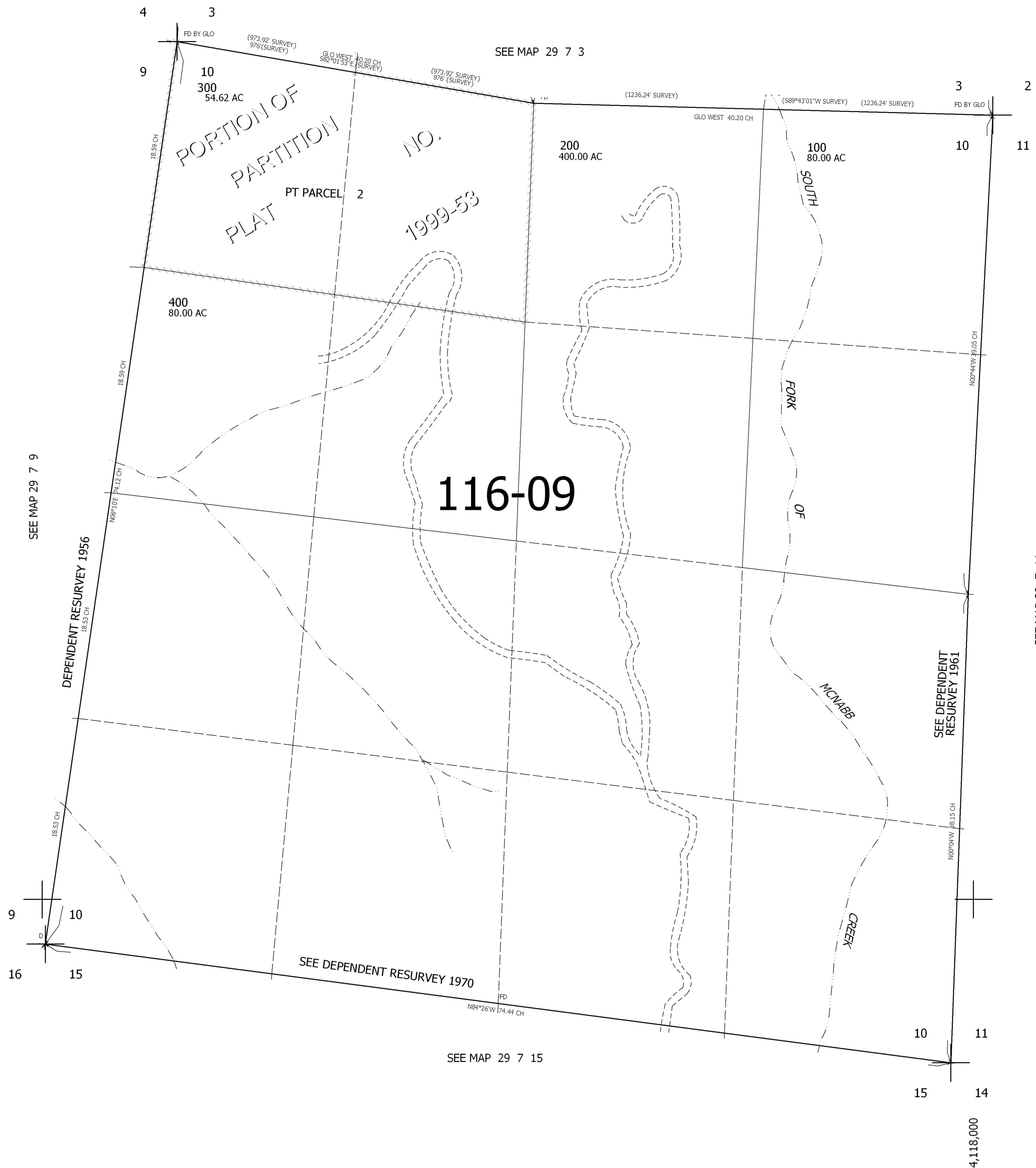
THIS MAP WAS PREPARED FOR ASSESSMENT PURPOSE ONLY.

SEC.10 T.29S. R.7W. W.M.
DOUGLAS COUNTY

REVISED ON
4-13-10

29 7 10

1" = 400'



CANCELLED NO'S
200M1

522,000

4,118,000

29 7 10